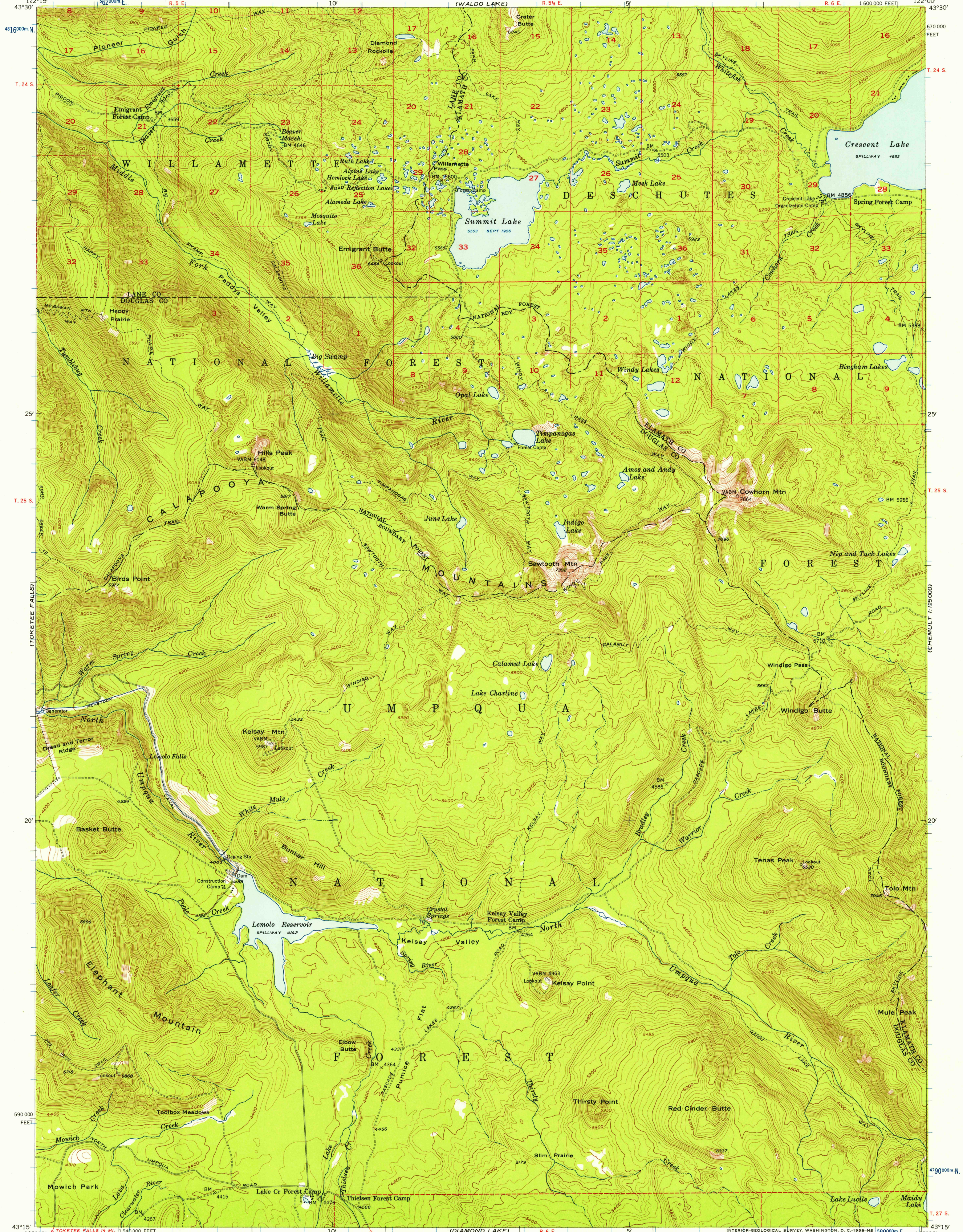
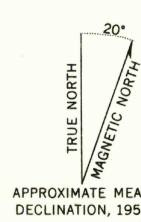


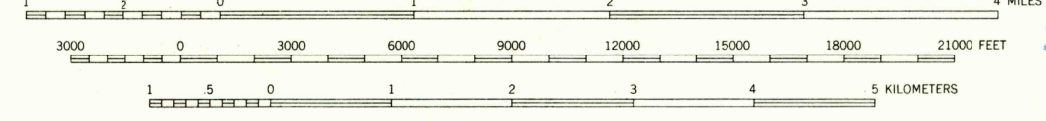
(MAIDEN PEAK)
1:25,000



Mapped, edited, and published by the Geological Survey
Control by USGS and USC&GS
Topography from aerial photographs by multiplex methods
Aerial photographs taken 1953. Field check 1956
Polyconic projection. 1927 North American datum
10,000-foot grid based on Oregon coordinate system,
south zone
1000-meter Universal Transverse Mercator grid ticks,
zone 10, shown in blue
Dashed land lines indicate approximate locations
Unchecked elevations are shown in brown



SCALE 1:62500



CONTOUR INTERVAL 40 FEET
DATUM IS MEAN SEA LEVEL

USGS
Historical File
Topographic Division



ROAD CLASSIFICATION
Light-duty ————
Unimproved dirt - - - - -

SUMMIT LAKE, OREG.
N4315-W12200/15

U.S.G.S.
FILE COPY
TOPOGRAPHIC DIVISION

MAR 12 1958

1900