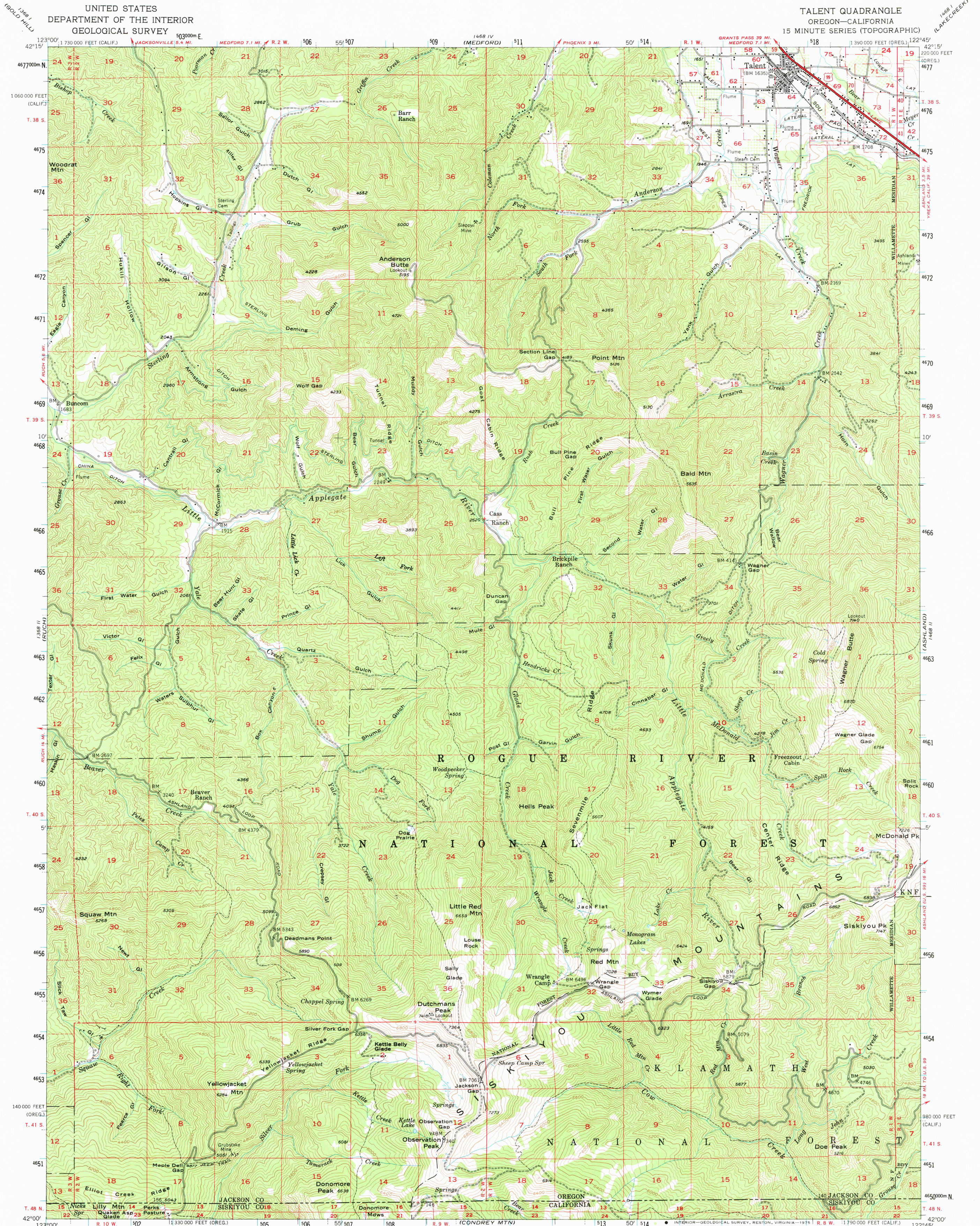


UNITED STATES  
DEPARTMENT OF THE INTERIOR  
GEOLOGICAL SURVEY

TALENT QUADRANGLE  
OREGON—CALIFORNIA  
15 MINUTE SERIES (TOPOGRAPHIC)

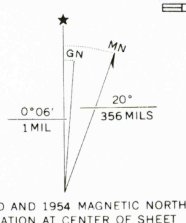


Mapped, edited, and published by the Geological Survey

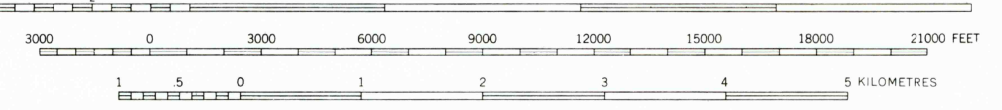
Control by USGS and USC&GS

Topography from aerial photographs by multiplex methods  
Aerial photographs taken 1951. Field check 1954  
Polyconic projection. 1927 North American datum  
10,000-foot grids based on Oregon coordinate system, south zone  
and California coordinate system, zone 1

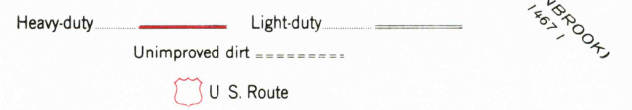
Dashed land lines indicate approximate locations  
1000-metre Universal Transverse Mercator grid ticks,  
zone 10, shown in blue



SCALE 1:62500



ROAD CLASSIFICATION



TALENT, OREG.—CALIF.  
N4200—W12245/15

1954

AMS 1468 III SW—SERIES V792

THIS MAP COMPLIES WITH NATIONAL MAP ACCURACY STANDARDS  
FOR SALE BY U.S. GEOLOGICAL SURVEY, DENVER, COLORADO 80225 OR RESTON, VIRGINIA 22092  
A FOLDER DESCRIBING TOPOGRAPHIC MAPS AND SYMBOLS IS AVAILABLE ON REQUEST

USGS  
HISTORICAL FILE  
TOPOGRAPHIC DIVISION

JUL 3 1

42