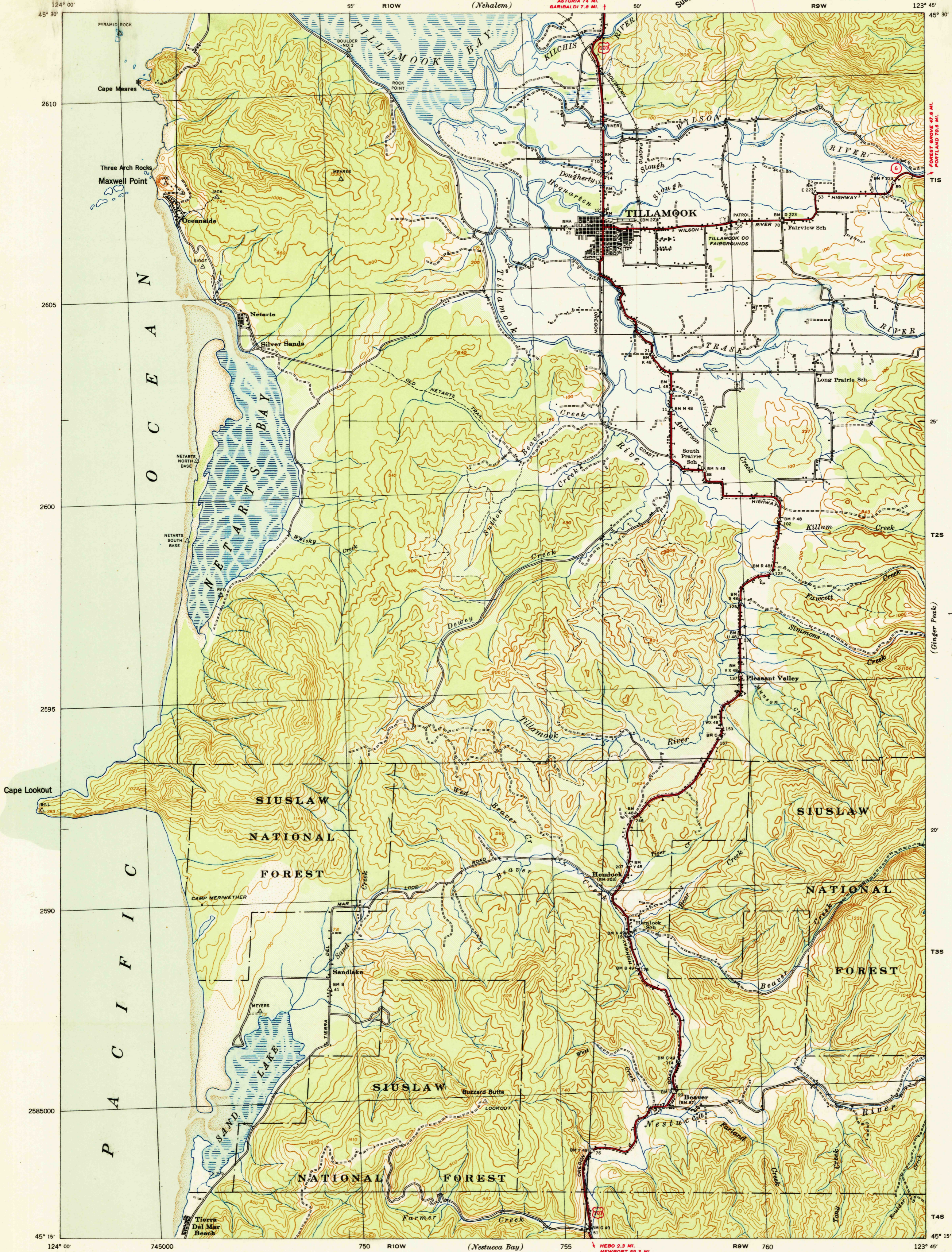


CORPS OF ENGINEERS, U. S. ARMY
TACTICAL MAP

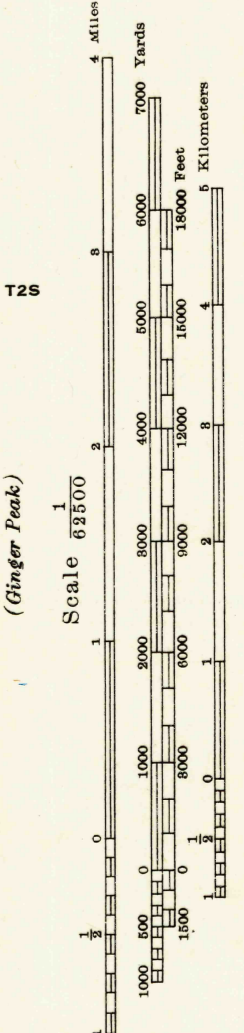
OREGON
TILLAMOOK COUNTY
TILLAMOOK QUADRANGLE
GRID ZONE "G"



Advance Sheet
Subject to correction

(Barlight)

FOREST GROVE 47.8 MI.
PORTLAND 76.8 MI.



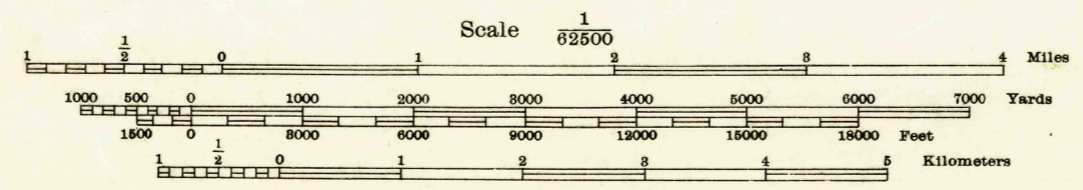
(Ginger Peak)

T35

T45



Prepared under the direction of the Chief of Engineers, U. S. Army, 1941-1942. Horizontal control by 29th Engineers, 1939, and U. S. Coast and Geodetic Survey, 1908. Vertical control by 29th Engineers, U. S. Army, 1939, and U. S. Coast and Geodetic Survey, 1930. Topography by 29th Engineers, U. S. Army, 1941, from Tandem T-3A (5 lens) aerial photographs, by stereo-comparagraph methods. Intermediate elevation by multiplex aero-projectors. Photography by 91st Observation Squadron, Air Corps, U. S. Army, 1937. Polyconic Projection, North American 1927 Datum.



Contour Interval 100 feet
Datum is mean sea level (1929 Adj.)
FIVE THOUSAND YARD GRID COMPUTED FROM "GRID SYSTEM FOR PROGRESSIVE MAPS IN THE U. S." ZONE G, U. S. C. & G. S. SPECIAL PUBLICATION NO. 55 (THE LAST THREE DIGITS OF THE GRID NUMBERS ARE OMITTED)
NOTE: OFFICERS USING THIS MAP WILL MARK HEREON CORRECTIONS AND ADDITIONS WHICH COME TO THEIR ATTENTION AND MAIL DIRECT TO THE CHIEF OF ENGINEERS, WASHINGTON, D. C.



ROUTES USUALLY TRAVELED
HARD IMPERVIOUS SURFACES
OTHER SURFACE IMPROVEMENTS
101 U. S. ROUTE 1841
6 STATE ROUTE

TILLAMOOK, OREG.
N4515-W12345 / 15

Federal Board of Surveys & Maps
FILE COPY
Map Information Office