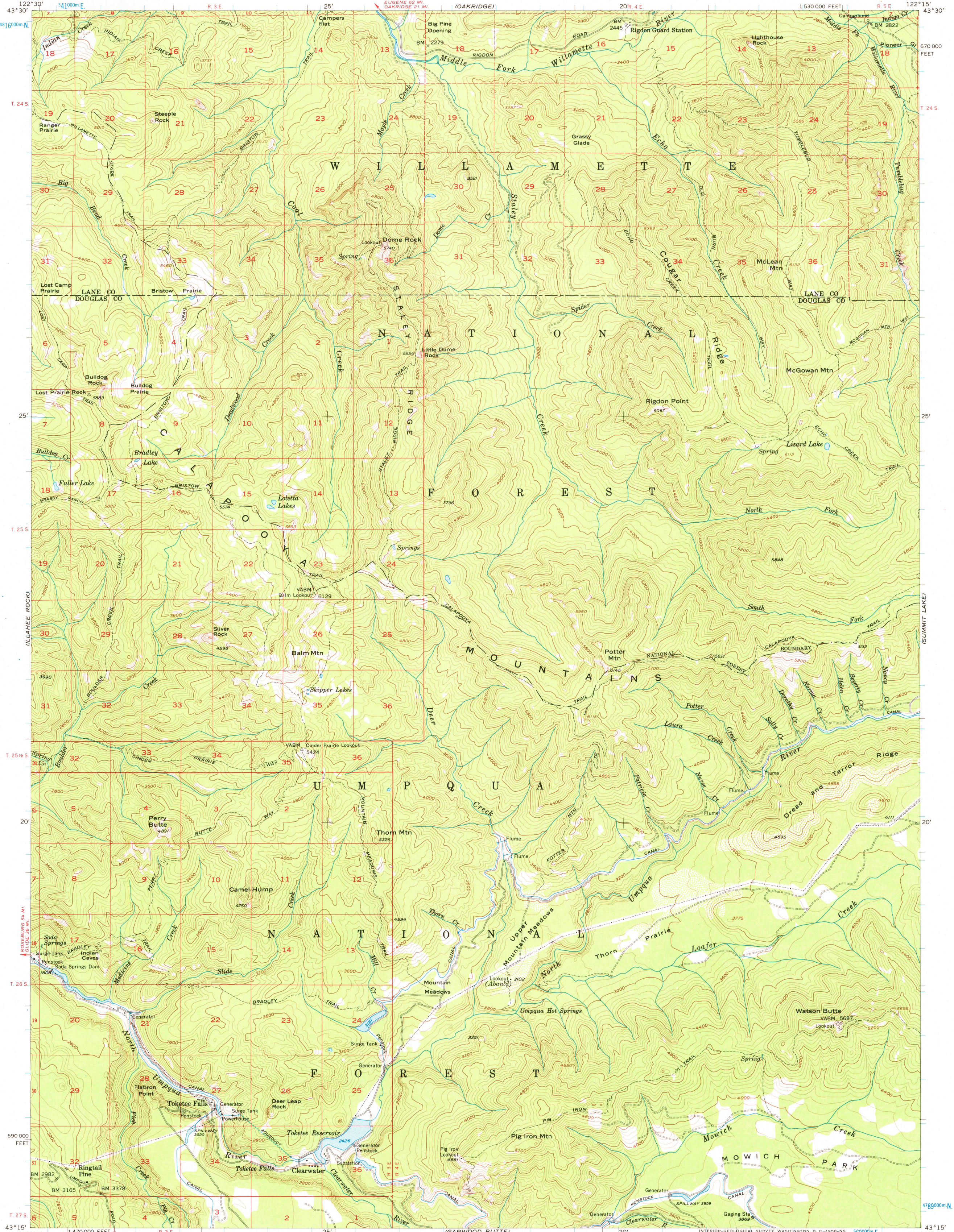


(FAIRVIEW PEAK)

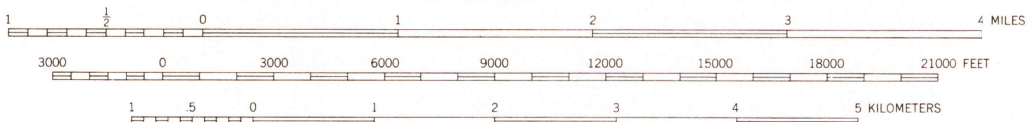
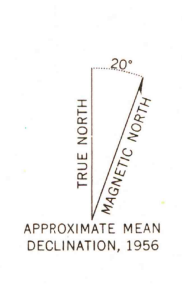
UNITED STATES  
DEPARTMENT OF THE INTERIOR  
GEOLOGICAL SURVEY

TOKETEE FALLS QUADRANGLE  
OREGON  
15 MINUTE SERIES (TOPOGRAPHIC)

(WALDO LAKE)



Mapped, edited, and published by the Geological Survey  
Control by USGS and USC&GS  
Topography from aerial photographs by multiplex methods  
Aerial photographs taken 1953. Field checked 1956  
Polyconic projection. 1927 North American datum  
10,000-foot grid based on Oregon coordinate system,  
south zone  
1000-meter Universal Transverse Mercator grid ticks,  
zone 10, shown in blue  
Dashed land lines indicate approximate locations  
Unchecked elevations are shown in brown



CONTOUR INTERVAL 80 FEET  
DATUM IS MEAN SEA LEVEL



ROAD CLASSIFICATION  
Light-duty ———— Unimproved dirt - - - - -

TOKETEE FALLS, OREG.  
N4315-W12215/15

1956

FOR SALE BY U. S. GEOLOGICAL SURVEY, DENVER 2, COLORADO OR WASHINGTON 25, D. C.  
A FOLDER DESCRIBING TOPOGRAPHIC MAPS AND SYMBOLS IS AVAILABLE ON REQUEST

RETURN TO:  
MMD HISTORICAL MAP ARCHIVES  
CANTON, MS-522