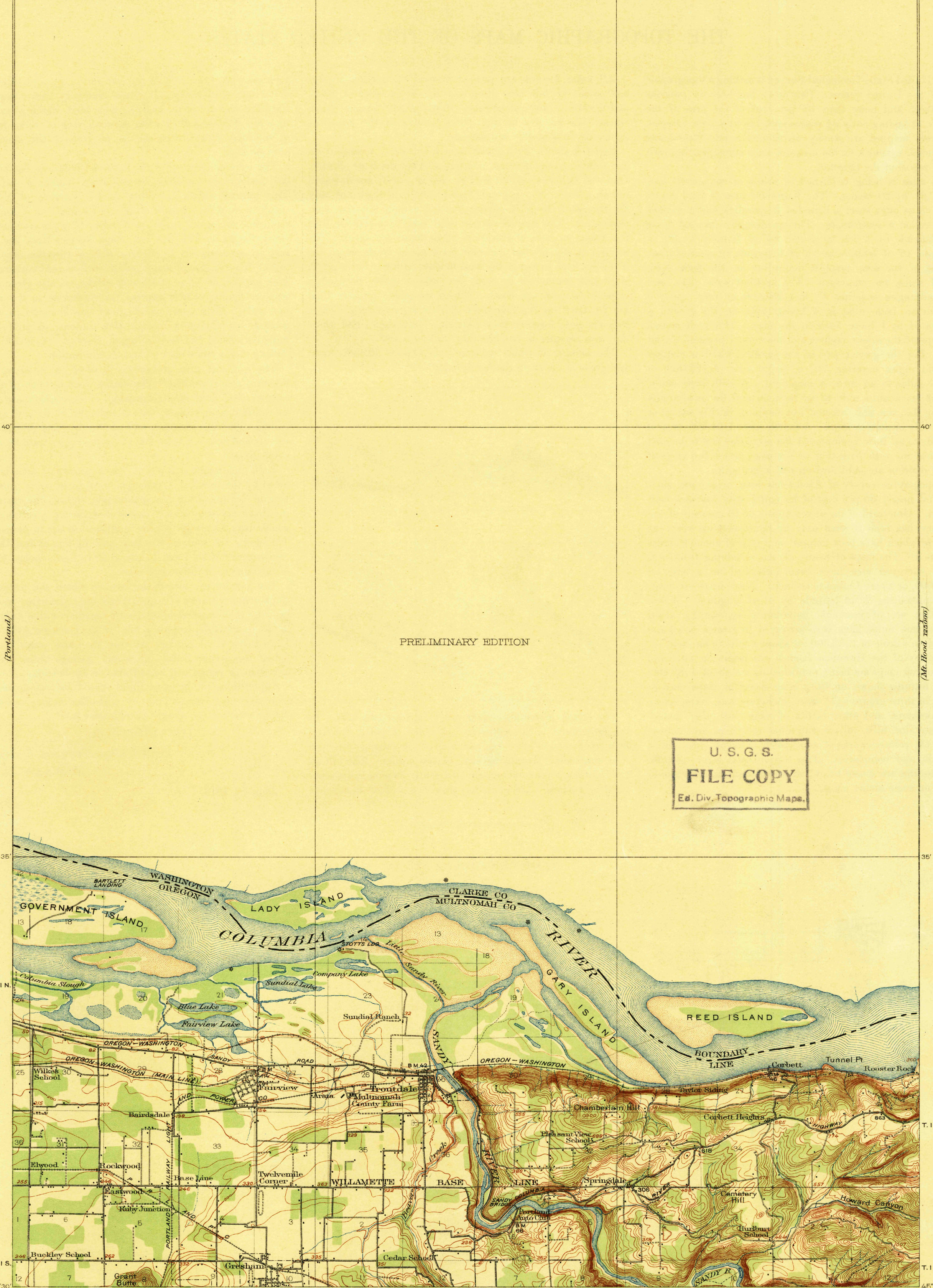


122°30' 45" 25' 20' 122°15' 45"



PRELIMINARY EDITION

U. S. G. S.
FILE COPY
Ed. Div. Topographic Maps.

U. S. G. S.
FILE COPY
Ed. Div. Topographic Maps.

U. S. G. S.
FILE COPY

W. H. Herron, Acting Chief Geographer.
T. G. Gardine, Geographer in charge.
Topography by Chas. Hartmann, Jr.
Control by U. S. Coast and Geodetic Survey, E. M. Bandli,
O. C. Kintner, J. H. Carlock, and Chas. Hartmann, Jr.
Surveyed in 1916.

Scale 62500
1 2 3 4 Miles
1 2 3 4 5 Kilometers
Contour interval 25 feet.
Datum is mean sea level.

Edition of 1918.
JUL 8 1918 3020

Historical File
Topographic Division

TRAIL NORTH
MAGNETIC NORTH
APPROXIMATE MEAN DECLINATION 1916.
TROUTDALE, Oreg.
NAME CHGD TO CAMAS, ORE.

(Oregon City)

(Basque)

3020