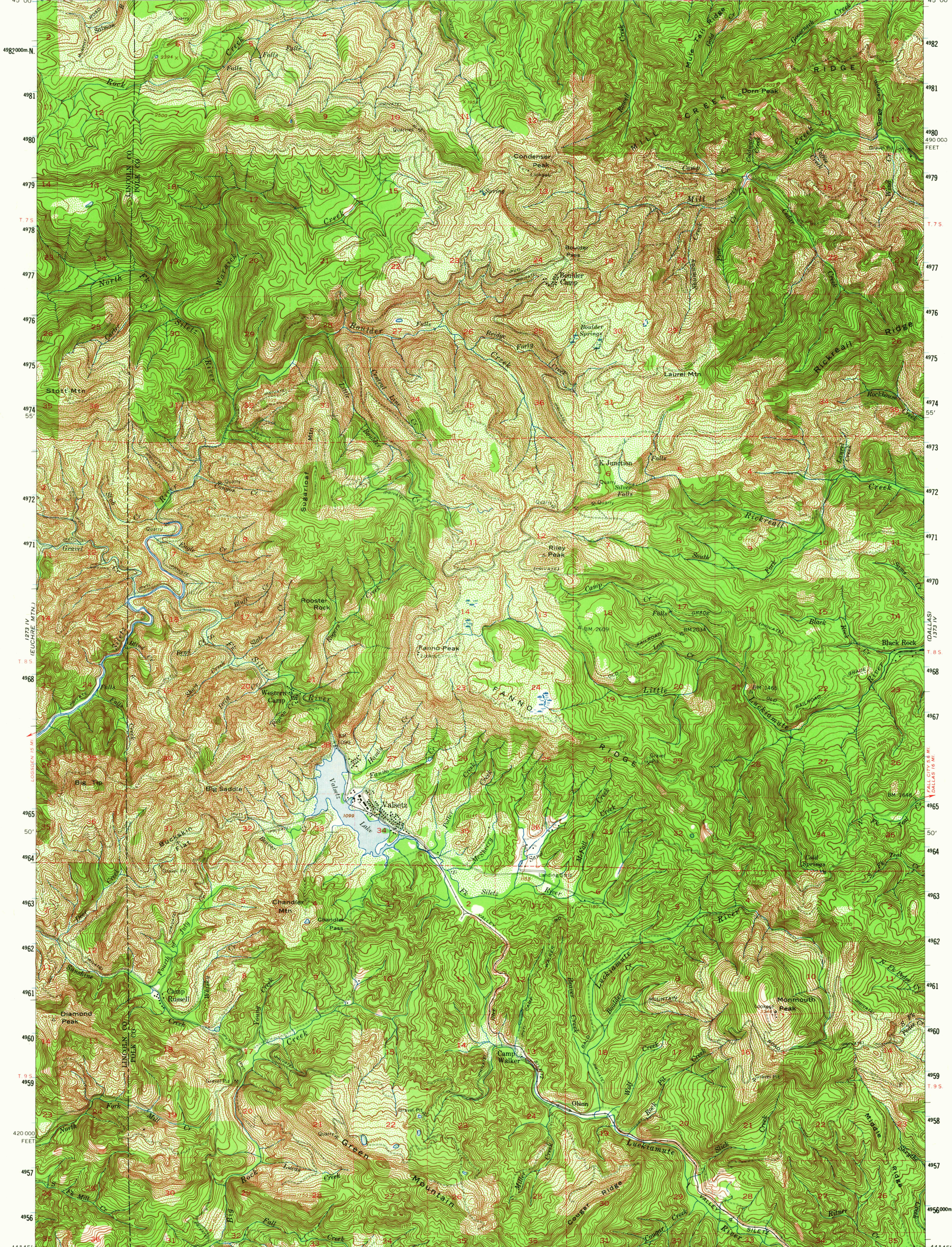
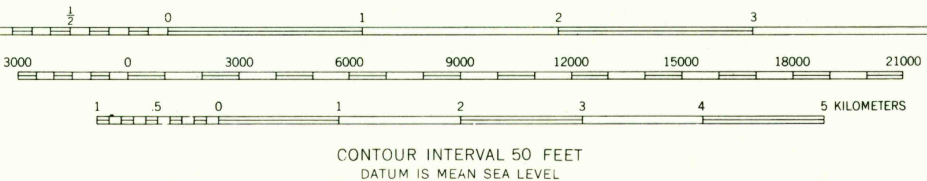
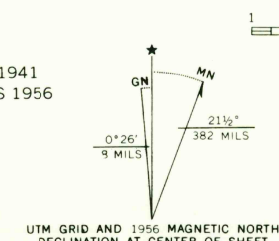


123° 45' R 9 W 442000m E 443 445 446 R 9 W 40' GRAND RONDE (OREG) (10 4.8 MI) 1274 II (GRAND RONDE) 452 453 454 455 456 457 R 7 W 458 459 1 220 000 FEET 123° 30' 45° 00'



Map by the Army Map Service
Edited and published by the Geological Survey
Control by USGS, USC&GS, and USCE
Topography from aerial photographs by multiplex methods 1941
Aerial photographs taken 1939. Culture revision by USGS 1956
Polyconic projection. 1927 North American datum
10,000-foot grid based on Oregon coordinate system,
north zone
1000-meter Universal Transverse Mercator grid ticks,
zone 10, shown in blue
Dashed land lines indicate approximate locations
Unchecked elevations are shown in brown



ROAD CLASSIFICATION
Light duty
Unimproved dirt

VALSETZ, OREG.
N4445-W12330/15

FOR SALE BY U. S. GEOLOGICAL SURVEY, DENVER 25, COLORADO OR WASHINGTON 25, D. C.
A FOLDER DESCRIBING TOPOGRAPHIC MAPS AND SYMBOLS IS AVAILABLE ON REQUEST

1956
AMS 1273 I-SERIES V792

U.S.G.S.
FILE COPY
TOPOGRAPHIC DIVISION

3855
FEB 5 1965