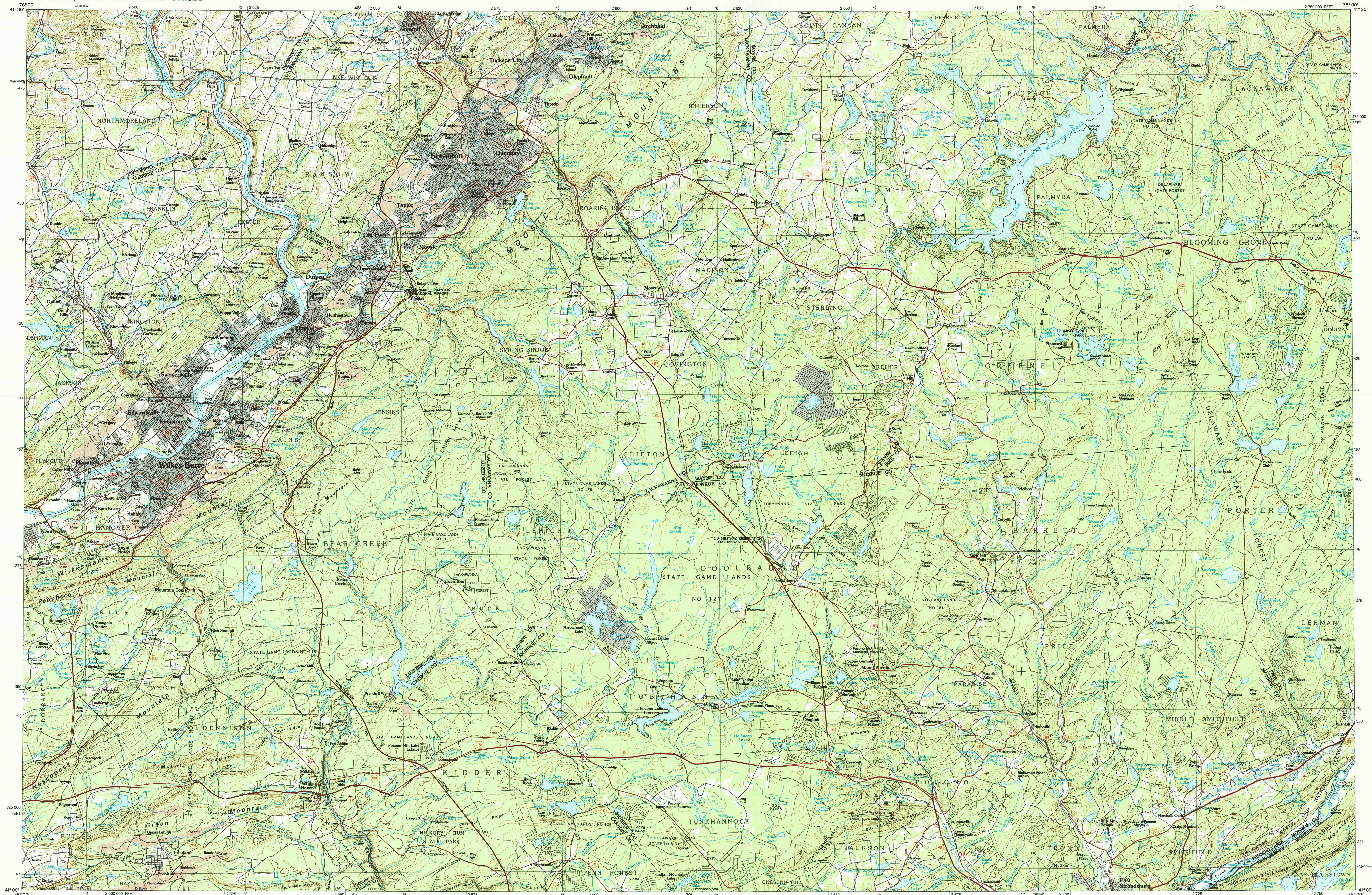


SCRANTON, PENNSYLVANIA-NEW JERSEY

30x60 MINUTE SERIES (TOPOGRAPHIC)



Scranton

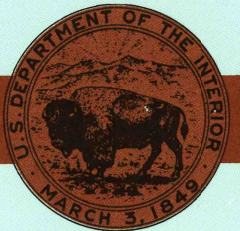
PENNSYLVANIA-NEW JERSEY

**1:100 000-scale *metric*
topographic map**



**30 X 60 MINUTE QUADRANGLE
SHOWING**

- Contours and elevations in meters
- Highways, roads and other manmade structures
- Water features
- Woodland areas
- Geographic names



GEOLOGICAL SURVEY

1986

Produced by the United States Geological Survey

Compiled from USGS 1:24 000-scale topographic maps dated 1943-1983. Planimetry revised from aerial photographs taken 1949-1984 for source data. Revised information not field checked. Map edited 1986

Projection and 10 000-meter grid, zone 18,
Universal Transverse Mercator
25 000-foot grid ticks based on Pennsylvania coordinate system, north zone

1927 North American Datum

To place on the predicted North American Datum 1983, move the projection lines 5 meters south and 31 meters west

There may be private inholdings within the boundaries of the National or State reservations shown on this map

CONTOUR INTERVAL 20 METERS
NATIONAL GEODETIC VERTICAL DATUM OF 1929
ELEVATIONS SHOWN TO THE NEAREST METER

THIS MAP COMPLIES WITH NATIONAL MAP ACCURACY STANDARDS

| Meters | Feet |
|--------|---------|
| 1 | 3.2808 |
| 2 | 6.5617 |
| 3 | 9.8425 |
| 4 | 13.1234 |
| 5 | 16.4042 |
| 6 | 19.6850 |
| 7 | 22.9659 |
| 8 | 26.2467 |
| 9 | 29.5276 |
| 10 | 32.8084 |

DECLINATION DIAGRAM

11°
196 MILS 920°
5 MILS

| | 1 | 2 | 3 |
|---|---|---|---|
| 4 | 5 | 6 | 7 |
| 6 | 7 | 8 | |

To convert meters to feet multiply by 3.2808

To convert feet to meters multiply by 0.3048

UTM grid convergence (GN) and 1983 magnetic declination (MN) at center of map Diagram is approximate

1 Towanda
2 Honesdale
3 Monticello
4 Williamsport East
5 Middletown
6 Sunbury
7 Allenstown
8 Newark

FOR SALE BY U. S. GEOLOGICAL SURVEY
DENVER, COLORADO 80225, OR RESTON, VIRGINIA 22092

Topographic Map Symbols

- Primary highway, hard surface
- Secondary highway, hard surface
- Light duty road, principal street, hard or improved surface
- Other road or street; trail
- Road name: Interstate; U.S. State
- Railroad; standard gauge; narrow gauge
- Bridge; overpass; underpass
- Tunnel; road; railroad
- Built up area; locality; elevation
- Airport; landing field; landing strip
- National boundary
- State boundary
- County boundary
- National or State Reserve boundary
- Land grant boundary
- U.S. public lands survey: range, township; section
- Range, township; section line: projected
- Power transmission line; pipeline
- Power, transmission line; pipeline
- Canal; dam with lock
- Cemetery; building
- Windmill; water well; spring
- Mine shaft; edit or cave; mine; quarry; gravel pit
- Campground; picnic area; U.S. location monument
- Run; cist; dwelling
- Dissected surface: strip mine, lava, sand
- Contoured surface: index, intermediate; supplementary
- Bathymetric contours: index, intermediate
- Stream, lake; perennial; intermittent
- Rapids, large and small; falls, large and small
- Area to be submerged; marsh, swamp
- Land subject to controlled inundation; woodland
- Scrub; mangrove
- Orchard; vineyard

A pamphlet describing topographic maps is available on request

RETURN TO:
USGS NHD HISTORICAL MAP ARCHIVES

● INTERIOR—GEOLOGICAL SURVEY, RESTON, VIRGINIA—193

A horizontal number line with two scales. The top scale is labeled 'KILOMETERS' and ranges from 0 to 20 with major tick marks every 1 unit. The bottom scale is labeled 'MILES' and ranges from 0 to 12 with major tick marks every 1 unit. The two scales are aligned such that 10 kilometers corresponds to 6.25 miles, 15 kilometers to 9.375 miles, and 20 kilometers to 12.5 miles. The line is divided into four equal segments by these three points.

SCALE 1:100 000
ON THE MAP REPRESENTS 1 KILOMETRE
CONTOUR INTERVAL 20 METRES

SCRANTON, PENNSYLVANIA-NEW JERSEYNEW SERIES
41075-A1-TM-100

1986