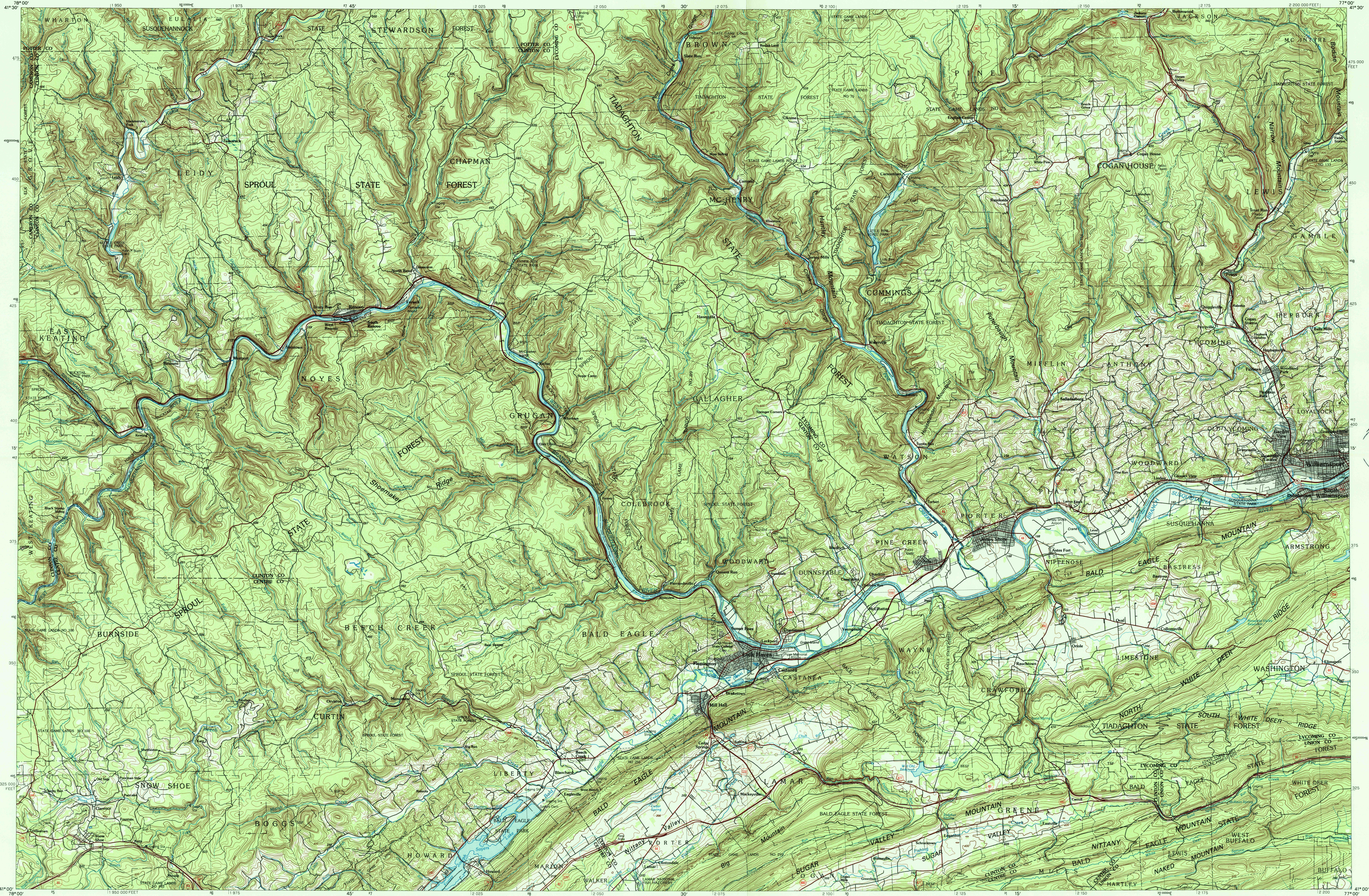


WILLIAMSPORT WEST, PENNSYLVANIA

30 X 60 MINUTE SERIES (TOPOGRAPHIC)



Williamsport West
PENNSYLVANIA

1:100 000-scale metric
topographic map



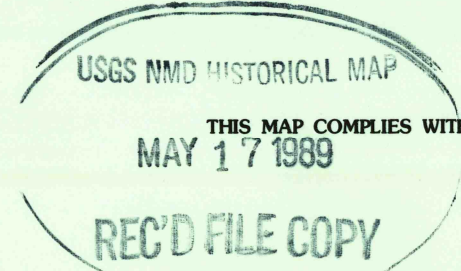
30 X 60 MINUTE QUADRANGLE
SHOWING

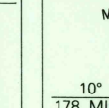
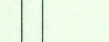
- Contours and elevations in meters
- Highways, roads and other manmade structures
- Water features
- Woodland areas
- Geographic names



Produced by the United States Geological Survey
Compiled from USGS 1:24 000-scale topographic maps dated 1971-1973. Planimetry revised from aerial photographs taken 1976-1980 and other source data. Revised information not field checked. Map edited 1984.
Projection and 10 000-meter grid, zone 18: Universal Transverse Mercator. 25 000-foot grid ticks based on Pennsylvania coordinate system, north zone. 1927 North American Datum 1983 move the projection lines 5 meters south and 25 meters west.
There may be private inholdings within the boundaries of the National or State reservations shown on this map.

CONTOUR INTERVAL 20 METERS
NATIONAL GEODETIC VERTICAL DATUM OF 1929
ELEVATIONS SHOWN TO THE NEAREST METER



CONVERSION TABLE		DECLINATION DIAGRAM		ADJOINING MAPS		
Meters	Feet			1	2	3
1	3.2808			4	5	
2	6.5617			6	7	8
3	9.8425					
4	13.1234					
5	16.4042					
6	19.6850					
7	22.9659					
8	26.2467					
9	29.5276					
10	32.8084					
To convert meters to feet multiply by 3.2808				1	Bradford	
To convert feet to meters multiply by 0.3048				2	Williamsport	
				3	Tremont	
				4	Conowingo	
				5	Williamsport East	
				6	Tremont	
				7	State College	
				8	Scranton	

FOR SALE BY U. S. GEOLOGICAL SURVEY
DENVER, COLORADO 80225, OR RESTON, VIRGINIA 22092

Topographic Map Symbols

Primary highway, hard surface	
Secondary highway, hard surface	
Light duty road, principal street, hard or improved surface	
Other road or street; trail	
Route marker: Interstate; U. S. State	
Railroad: standard gage; narrow gage	
Bridge: overpass; underpass	
Tunnel: road; railroad	
Built up area; locality; elevation	
Airport; landing field; landing strip	
National boundary	
State boundary	
County boundary	
National or State reservation boundary	
Land grant boundary	
U. S. public lands survey: range, township; section	
Range, township; section line: protected	
Power transmission line; pipeline	
Dam; dam with lock	
Cemetery; building	
Windmill; water well; spring	
Mine shaft; adit or cave; mine, quarry; gravel pit	
Campground; picnic area; U. S. location monument	
Ruins; old dwelling	
Distorted surface: strip mine, levee, sand	
Contours: index; intermediate; supplementary	
Bathymetric contours: index; intermediate	
Stream, lake: perennial; intermittent	
Rapids, large and small; falls, large and small	
Area to be submerged; marsh, swamp	
Land subject to controlled inundation; woodland	
Scrub; mangrove	
Orchard; vineyard	

A pamphlet describing topographic maps is available on request