

UNITED STATES
DEPARTMENT OF THE INTERIOR
GEOLOGICAL SURVEY

ABBOTTSTOWN QUADRANGLE
PENNSYLVANIA
7.5 MINUTE SERIES (TOPOGRAPHIC)
NW 1/4 HANOVER 15' QUADRANGLE

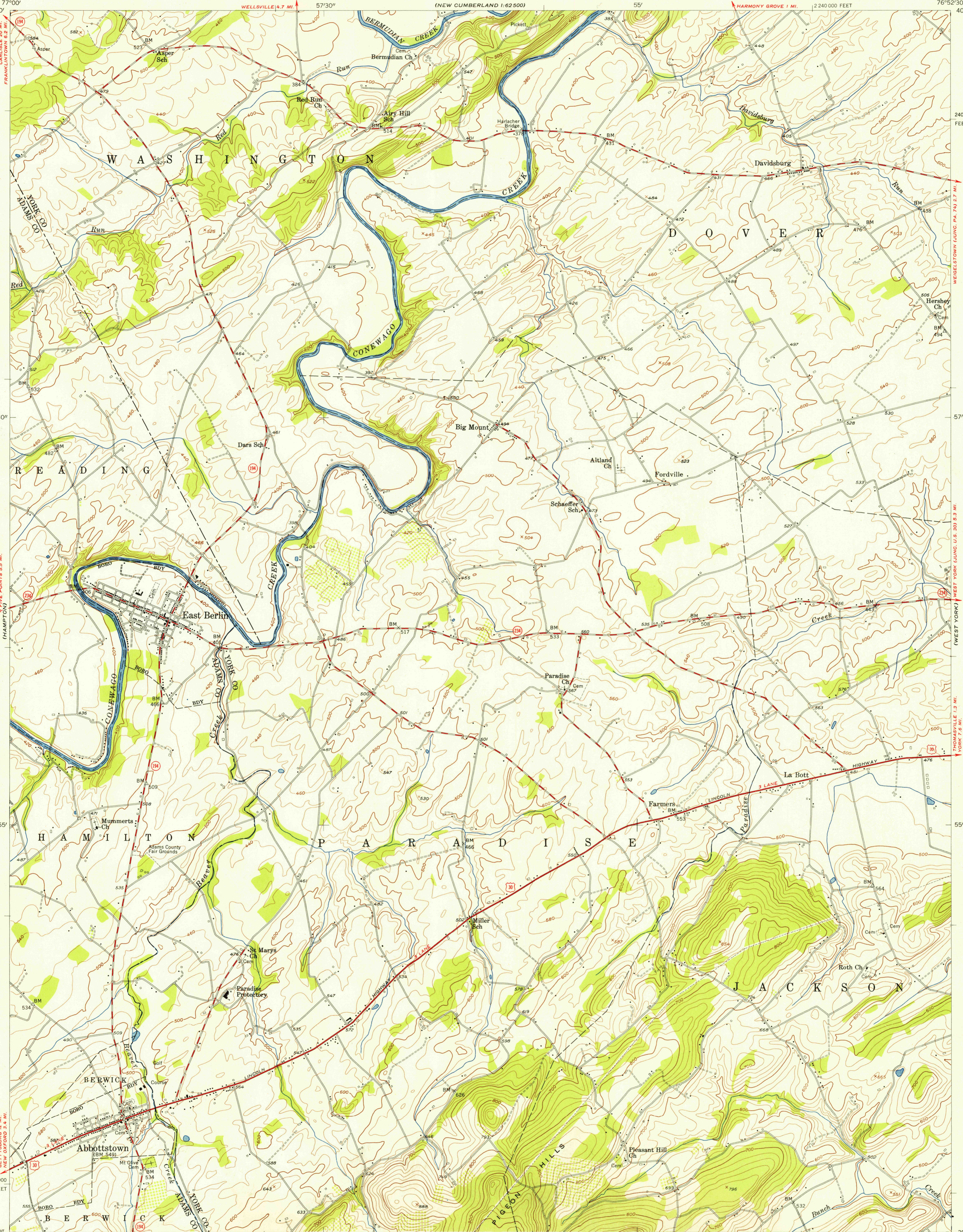
(NEW CUMBERLAND
1:62,500)

U.S.G.S.
FILE COPY
TOPOGRAPHIC DIVISION

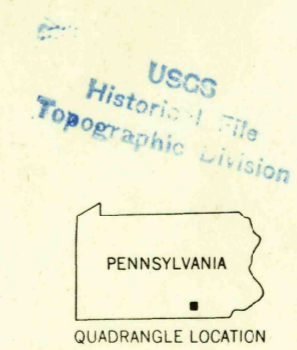
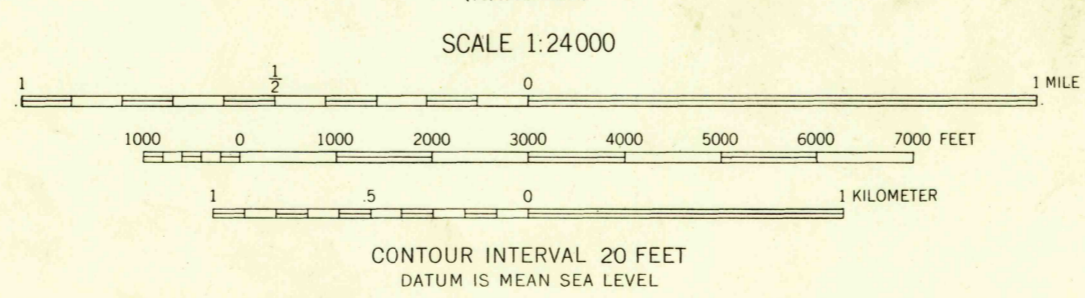
U.S.G.S.
FILE COPY
TOPOGRAPHIC DIVISION

U.S.G.S.
FILE COPY
TOPOGRAPHIC DIVISION

ABBOTTSTOWN, PA.
NW 1/4 HANOVER 15' QUADRANGLE
N 39°52.5' - W 76°52.5' 7.5
1953



Mapped, edited, and published by the Geological Survey
Control by USGS, USC&GS, and USCE
Topography from aerial photographs by multiplex methods
Aerial photographs taken 1952. Field check 1953
Polyconic projection. 1927 North American datum
10,000-foot grid based on Pennsylvania coordinate system,
south zone
Unchecked elevations are shown in brown



ROAD CLASSIFICATION			
Heavy-duty	Light-duty	Unimproved dirt	
Medium-duty			
U.S. Route	State Route		

THIS MAP COMPLIES WITH NATIONAL MAP ACCURACY STANDARDS
FOR SALE BY U. S. GEOLOGICAL SURVEY, WASHINGTON 25, D. C.
A FOLDER DESCRIBING TOPOGRAPHIC MAPS AND SYMBOLS IS AVAILABLE ON REQUEST