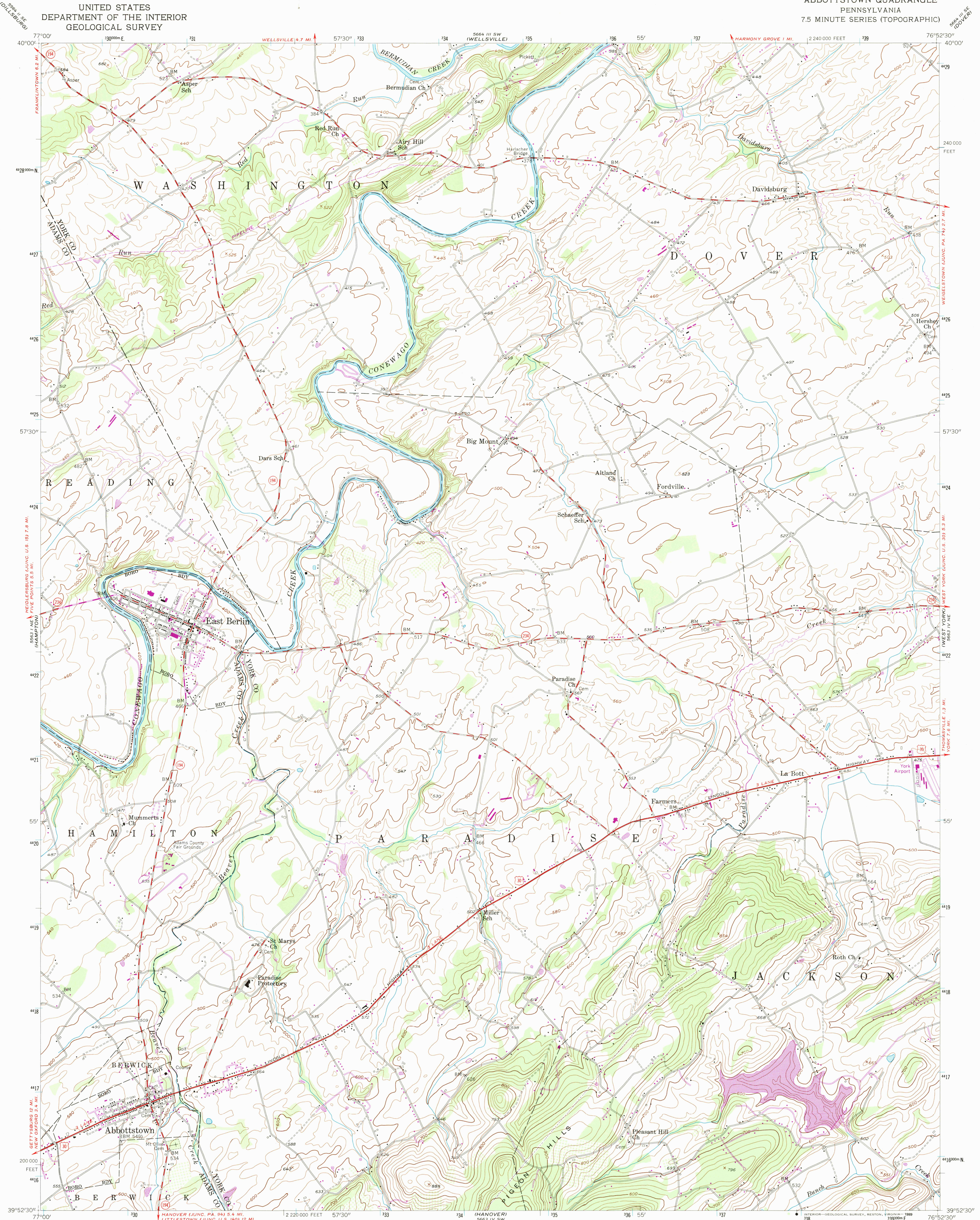


UNITED STATES
DEPARTMENT OF THE INTERIOR
GEOLOGICAL SURVEY

ABBOTTSTOWN QUADRANGLE
PENNSYLVANIA
7.5 MINUTE SERIES (TOPOGRAPHIC)



Maped, edited, and published by the Geological Survey
Control by USGS, USC&GS, and USCE

Topography from aerial photographs by multiplex methods
Aerial photographs taken 1952. Field check 1953

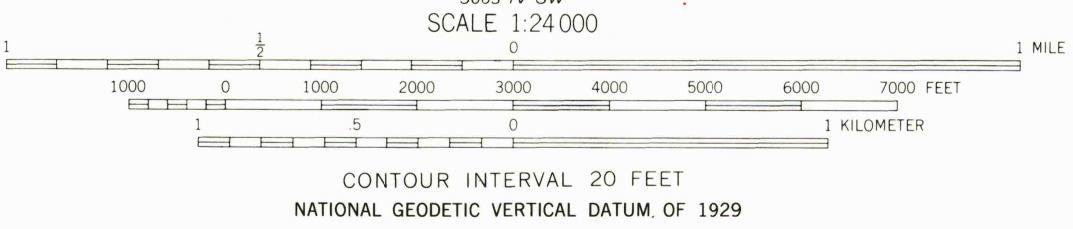
Polyconic projection. 1927 North American datum
10,000-foot grid based on Pennsylvania coordinate system,
south zone

1000-meter Universal Transverse Mercator grid ticks,
zone 18, shown in blue

Revisions shown in purple compiled in cooperation with
State of Pennsylvania agencies from aerial photographs
1968 and 1973. This information not field checked

Map photomapped 1981
No major culture or drainage changes observed

UTM GRID AND 1973 MAGNETIC NORTH
DECLINATION AT CENTER OF SHEET
To place on the predicted North American Datum 1983,
move the projection lines 6 meters south and
27 meters west as shown by dashed corner ticks



ROAD CLASSIFICATION	
Heavy-duty	Light-duty
Medium-duty	Unimproved dirt
U. S. Route	State Route

RETURN TO:
USGS AND HISTORICAL MAP ARCHIVES

ABBOTTSTOWN, PA.
39076-H8-TF-024
PHOTOINSPECTED 1981
1953
PHOTOREVISED 1968 AND 1973
DMA 5663 IV NW-SERIES V831

