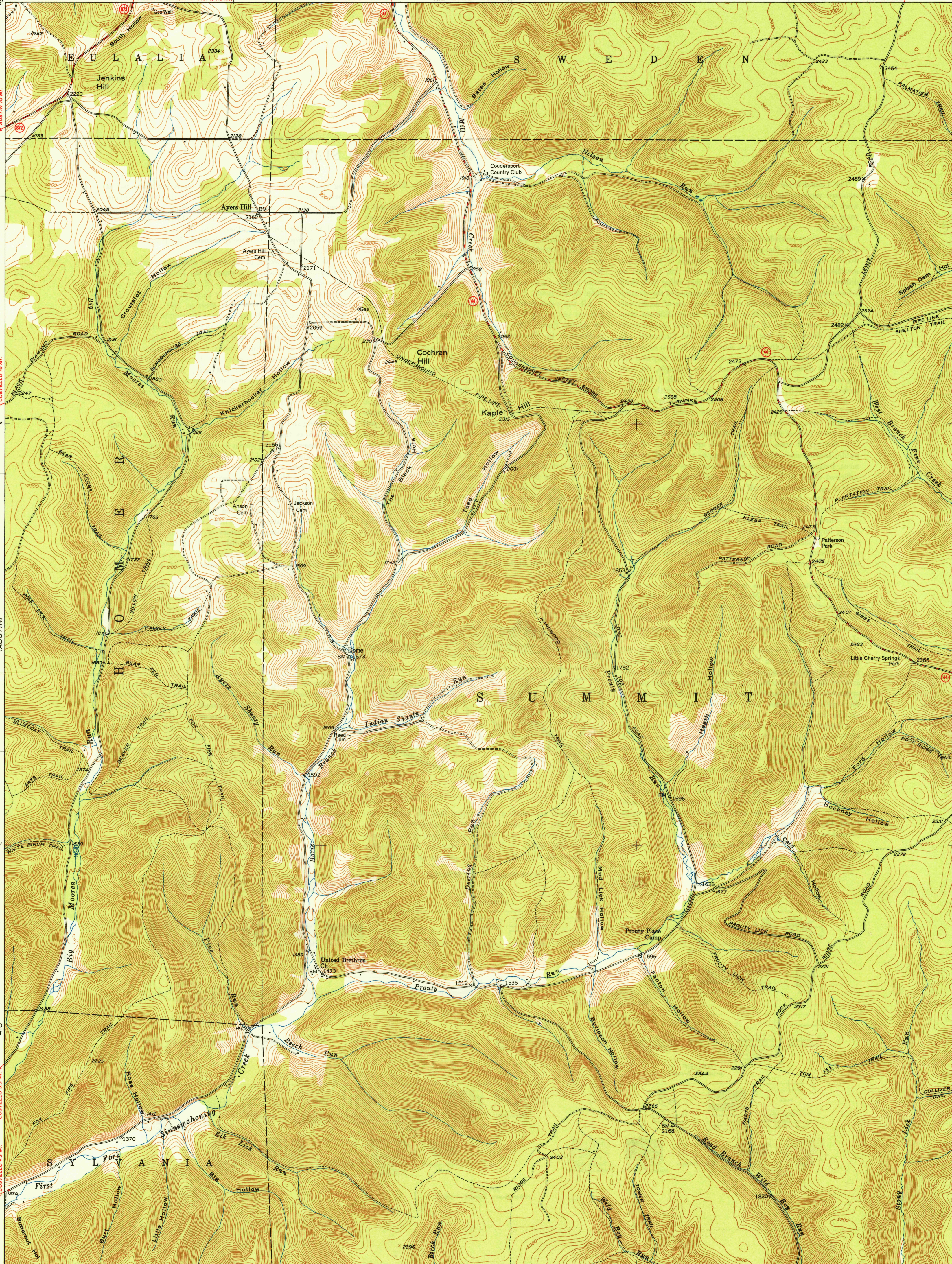
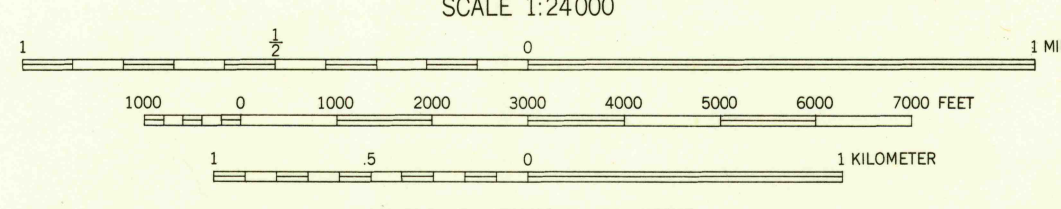


78°00' 41°45' 57°30' 55' 1:960 000 FEET 1:1 MI. TO U.S.S. 77°52'30" 41°45'



41°37'30" 78°00' 1940 000 FEET 57°30' 55' (CONRAD) 1:1 MI. 77°52'30" 41°37'30"

Mapped, edited, and published by the Geological Survey  
Control by USGS  
Topography from aerial photographs by multiplex methods  
Aerial photographs taken 1945. Field check 1947  
Polyconic projection. 1927 North American datum  
10,000-foot grid based on Pennsylvania coordinate system,  
north zone.



CONTOUR INTERVAL 20 FEET  
DATUM IS MEAN SEA LEVEL

ROAD CLASSIFICATION

HARD-SURFACE ALL WEATHER ROADS	DRY WEATHER ROADS
Heavy-duty. ——— 4 LANE LANE	Improved dirt. ———
Medium-duty. ——— 2 LANE LANE	Unimproved dirt. ———
Loose-surface, graded, or narrow hard-surface. - - -	
U. S. Route	State Route

U. S. G. S.  
FILE COPY  
Inspection and Editing.

AYERS HILL, PA.  
N4137.5-W7752.5/7.5  
PRINTED 1949

JUN 15 1949 2095

U. S. G. S.  
FILE COPY  
Inspection and Editing.

U. S. G. S.  
FILE COPY  
Inspection and Editing.

COUDERSPORT 3.5 MI.  
LYMANVILLE (JUNC. U.S. 6) 1.5 MI.

GENESEE 1:62500

WHARTON

SPORT RUN

APPROXIMATE MEAN  
DECLINATION, 1947

THIS MAP COMPLIES WITH NATIONAL MAP ACCURACY STANDARDS  
FOR SALE BY U. S. GEOLOGICAL SURVEY, WASHINGTON 25, D. C.