

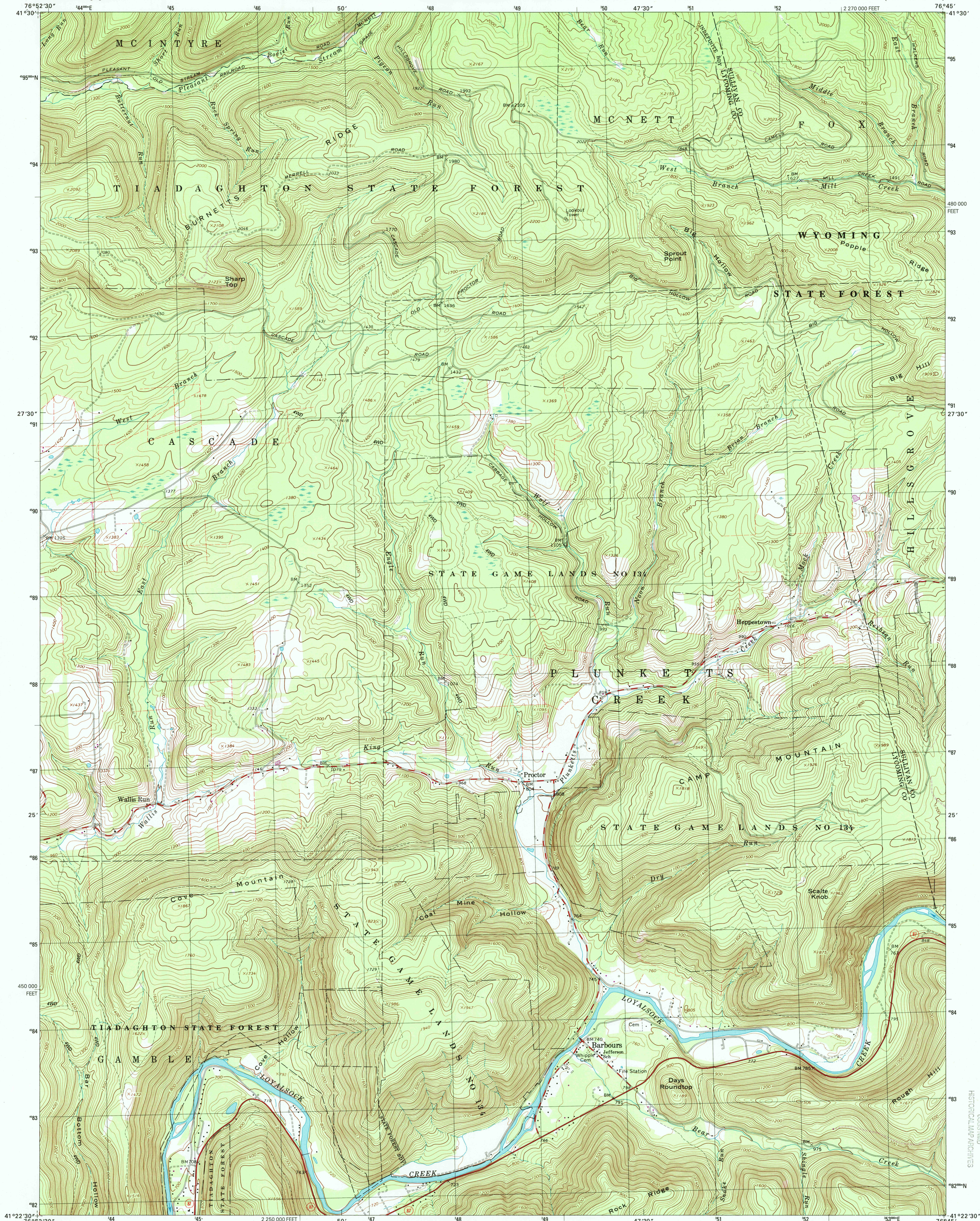


U.S. DEPARTMENT OF THE INTERIOR
U.S. GEOLOGICAL SURVEY

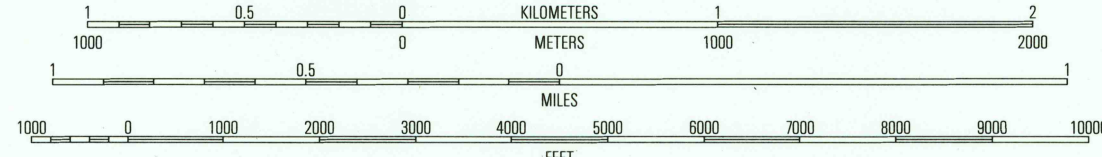
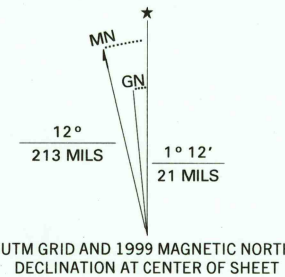


COMMONWEALTH OF PENNSYLVANIA
DEPARTMENT OF CONSERVATION AND NATURAL RESOURCES
BUREAU OF TOPOGRAPHIC AND GEOLOGIC SURVEY

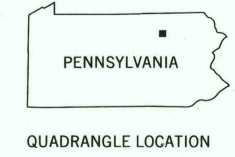
BARBOURS QUADRANGLE
PENNSYLVANIA
7.5-MINUTE SERIES (TOPOGRAPHIC)



Produced by the United States Geological Survey
in cooperation with Pennsylvania Department of Conservation
and Natural Resources, Bureau of Topographic and Geologic Survey
Topography compiled 1963. Planimetry derived from imagery taken
1973 and other sources. Photoshaded using imagery dated 1995;
no major culture or drainage changes observed. Survey control
current as of 1995. Boundaries revised 1999.
North American Datum of 1927 (NAD 27). Projection and
10 000-foot ticks: Pennsylvania coordinate system, north zone
(Lambert conformal conic).
1000-meter Universal Transverse Mercator grid, zone 18
North American Datum of 1983 (NAD 83) is shown by dashed
corner ticks. The values of the shift between NAD 27 and NAD 83
for 7.5-minute intersections are obtainable from National Geodetic
Survey NADCON software.
There may be private inholdings within the boundaries of
the National or State reservations shown on this map.
Information shown in purple may not meet USGS content standards
and may conflict with previously mapped contours.



CONTOUR INTERVAL 20 FEET
NATIONAL GEODETIC VERTICAL DATUM OF 1929
TO CONVERT FROM FEET TO METERS, MULTIPLY BY 0.3048



ROAD CLASSIFICATION
Primary highway
hard surface
Secondary highway
hard surface
Unimproved road
Light-duty road, hard or
improved surface
Interstate Route
U.S. Route
State Route

1	2	3	1 Ralston
			2 Grower
			3 Shunk
4		5	4 Bodines
			5 Hills Grove
			6 Montoursville North
6	7	8	7 Huntersville
			8 Picture Rocks

BARBOURS, PA
1995

NIMA 566 IV NE-SERIES V831

RECEIVED
NOV 30 1999
USGS M&D
HISTORICAL MAP ARCHIVES

