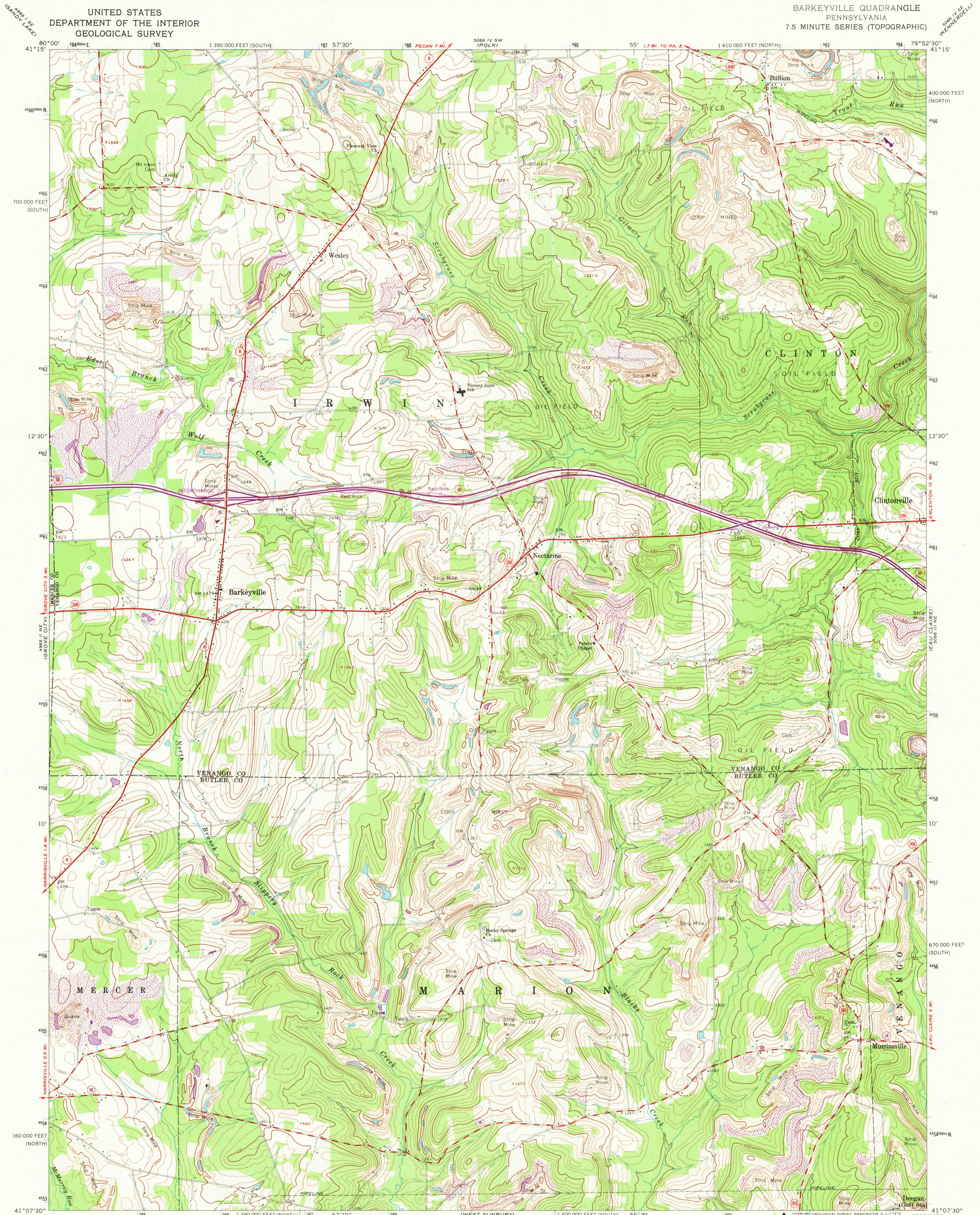


UNITED STATES
DEPARTMENT OF THE INTERIOR
GEOLOGICAL SURVEY

BARKEYVILLE QUADRANGLE
PENNSYLVANIA
7.5 MINUTE SERIES (TOPOGRAPHIC)



Mapped, edited, and published by the Geological Survey

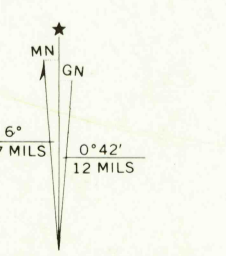
Control by USGS, USC&GS, and USCE

Topography by photogrammetric methods from aerial photographs taken 1962. Field checked 1963

Polycyclic projection. 1927 North American datum
10,000-foot grids based on Pennsylvania coordinate system, north and south zones
1000-meter Universal Transverse Mercator grid ticks, zone 17, shown in blue

Fine red dashed lines indicate selected fence and field lines where generally visible on aerial photographs. This information is un-checked

Revisions shown in purple compiled in cooperation with State of Pennsylvania agencies from aerial photographs taken 1972. This information not field checked

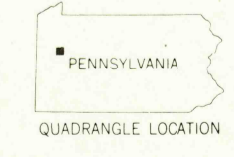


CONTOUR INTERVAL 20 FEET
DATUM IS MEAN SEA LEVEL

SCALE 1:24,000

THIS MAP COMPLIES WITH NATIONAL MAP ACCURACY STANDARDS
FOR SALE BY U. S. GEOLOGICAL SURVEY, WASHINGTON, D. C. 20242
A FOLDER DESCRIBING TOPOGRAPHIC MAPS AND SYMBOLS IS AVAILABLE ON REQUEST

ROAD CLASSIFICATION	
Heavy-duty	Light-duty
Medium-duty	Unimproved dirt
Interstate Route	State Route



BARKEYVILLE, PA.

N4107.5—W7952.5/7.5

PHOTOREVISED 1972

AMS 5066 III NW—SERIES V831

MAY 4 1973

2775
No Plans