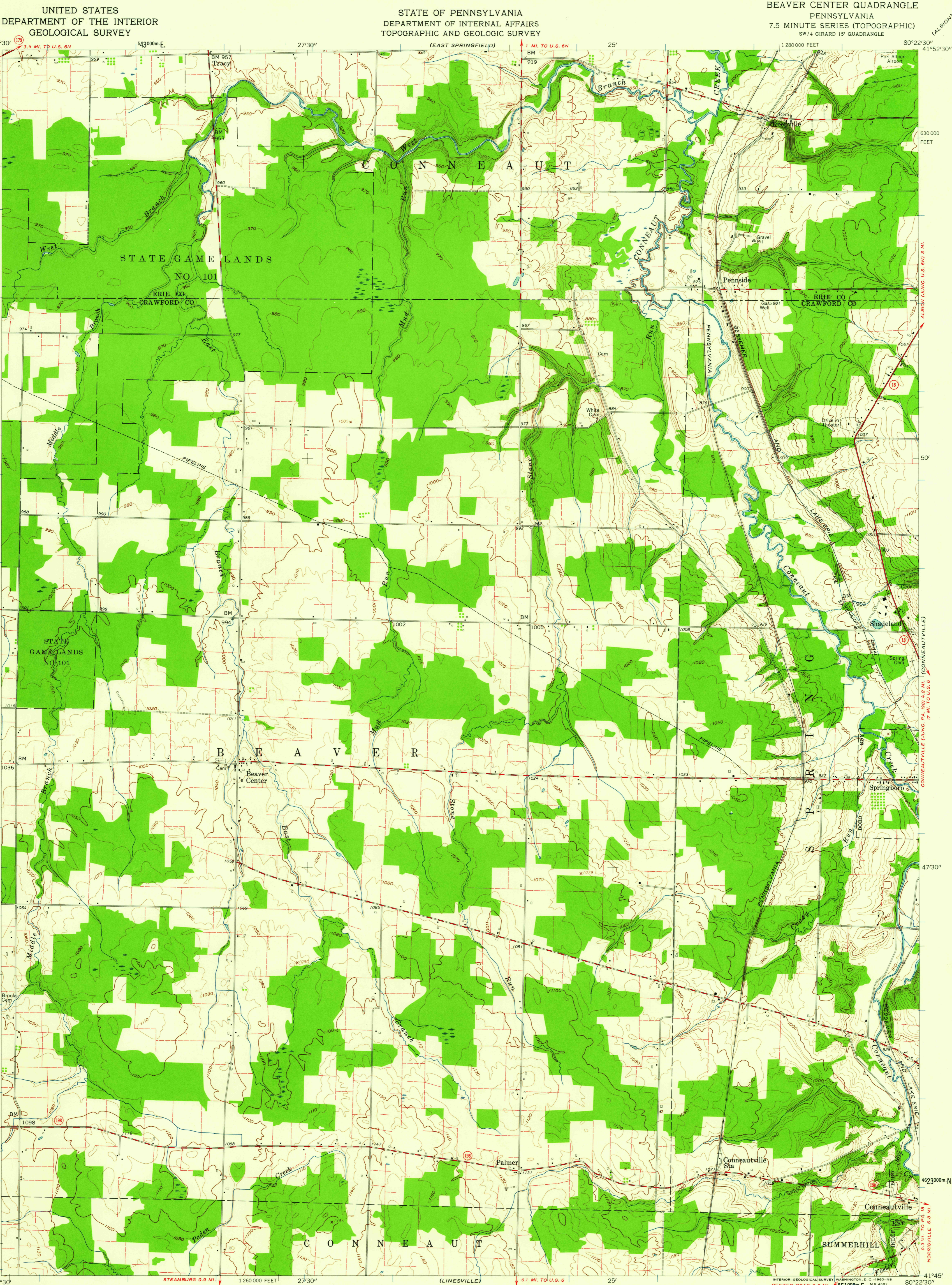
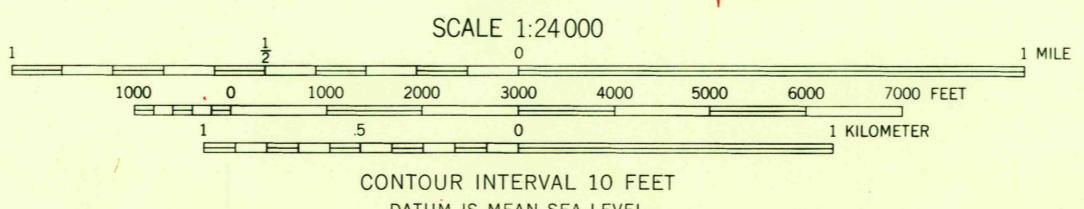


(CONNEAUT)  
41°52'30"  
4634000m N.  
50'  
1036  
47'30"  
990 000  
41°45'  
80°30'



Mapped, edited, and published by the Geological Survey  
Control by USGS, USC&GS, and USCE  
Topography from aerial photographs by photogrammetric methods  
Aerial photographs taken 1955 and 1957. Field check 1959  
Polyconic projection. 1927 North American datum  
10,000-foot grid based on Pennsylvania coordinate system,  
north zone  
1000-meter Universal Transverse Mercator grid ticks,  
zone 17, shown in blue  
Fine red dashed lines indicate selected fence and field lines  
visible on aerial photographs. This information is unchecked

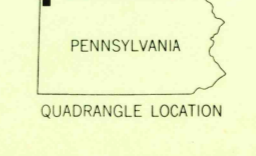
APPROXIMATE MEAN  
DECLINATION, 1959



USGS  
Historical File  
Topographic Division

ROAD CLASSIFICATION

Heavy-duty	Light-duty
Medium-duty	Unimproved dirt
○ State Route	



BEAVER CENTER, PA.  
SW 1/4 GIRARD 15' QUADRANGLE  
N 4145-W 8022.5/7.5

1959

THIS MAP COMPLIES WITH NATIONAL MAP ACCURACY STANDARDS  
FOR SALE BY U.S. GEOLOGICAL SURVEY, WASHINGTON 25, D. C.  
A FOLDER DESCRIBING TOPOGRAPHIC MAPS AND SYMBOLS IS AVAILABLE ON REQUEST

U.S.G.S.  
FILE COP  
TOPOGRAPHIC DIVISION

JAN 4 1961

2035