

496 1/2  
COMPALED

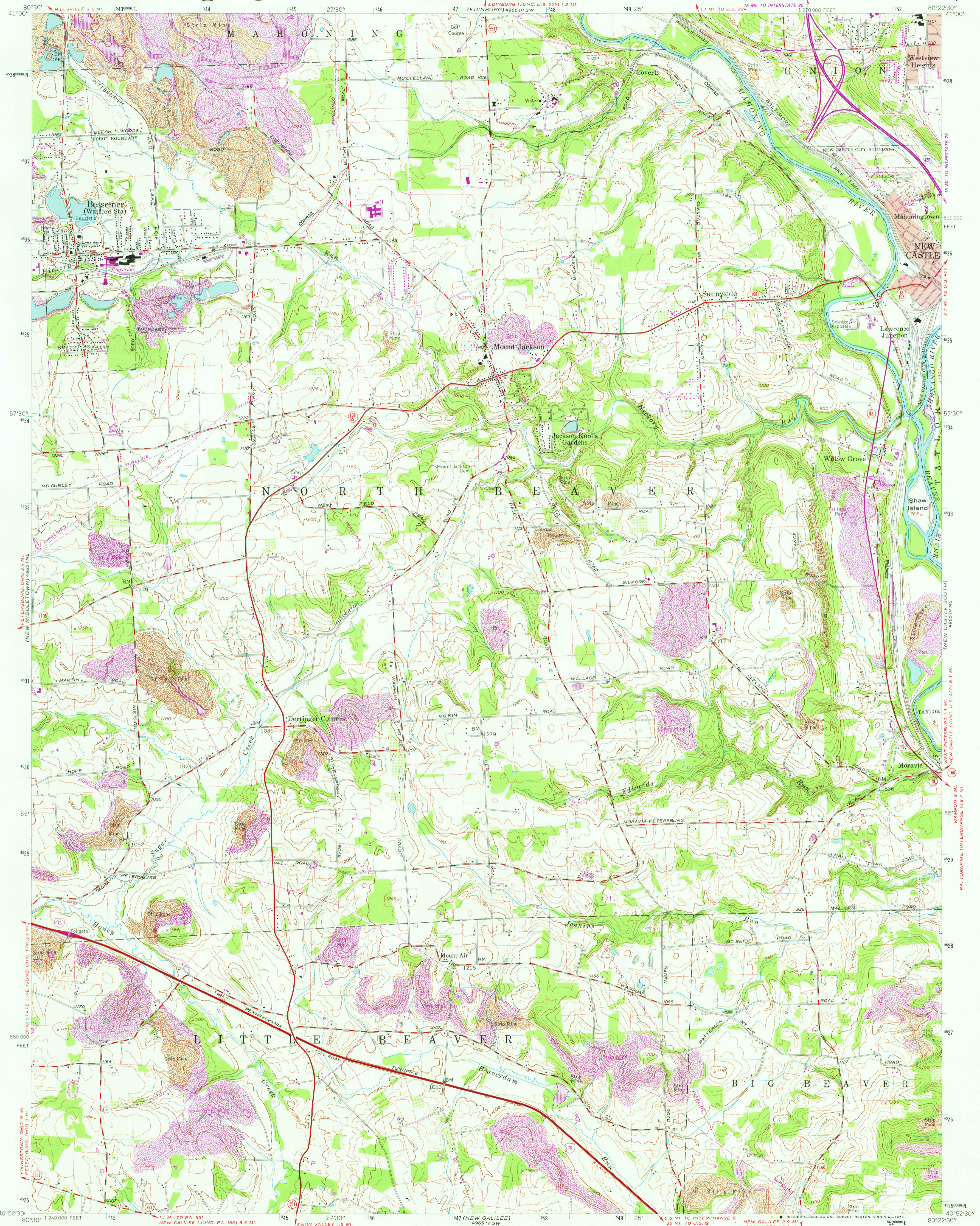
UNITED STATES  
DEPARTMENT OF THE INTERIOR  
GEOLOGICAL SURVEY



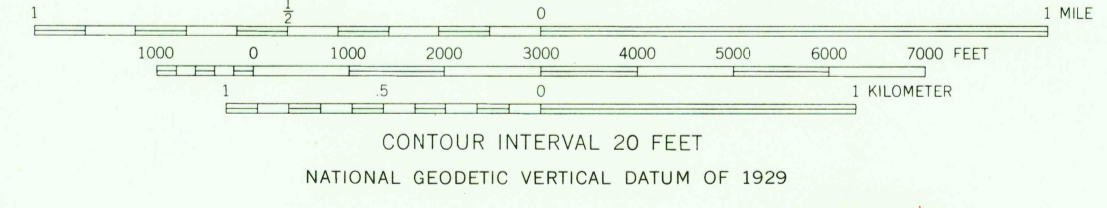
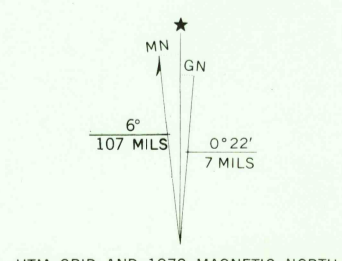
STATE OF PENNSYLVANIA  
DEPARTMENT OF INTERNAL AFFAIRS  
TOPOGRAPHIC AND GEOLOGIC SURVEY

BESSEMER QUADRANGLE  
PENNSYLVANIA—LAWRENCE CO.  
7.5 MINUTE SERIES (TOPOGRAPHIC)

(NEW CASTLE E 80711)  
496 1/2

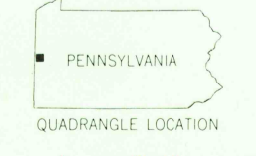


Mapped, edited, and published by the Geological Survey  
Control by USGS and USC&GS  
Topography from aerial photographs by photogrammetric methods  
Aerial photographs taken 1955. Field check 1958  
Polyconic projection. 1927 North American datum  
10,000-foot grid based on Pennsylvania coordinate system,  
south zone  
1000-meter Universal Transverse Mercator grid ticks,  
zone 17, shown in blue  
Fine red dashed lines indicate selected fence and field lines  
visible on aerial photographs. This information is unchecked  
Red tint indicates areas in which only  
landmark buildings are shown  
Unchecked elevations are shown in brown



CONTOUR INTERVAL 20 FEET  
NATIONAL GEODETIC VERTICAL DATUM OF 1929

THIS MAP COMPLIES WITH NATIONAL MAP ACCURACY STANDARDS  
FOR SALE BY U. S. GEOLOGICAL SURVEY, RESTON, VIRGINIA 22092  
A FOLDER DESCRIBING TOPOGRAPHIC MAPS AND SYMBOLS IS AVAILABLE ON REQUEST



ROAD CLASSIFICATION  
Heavy-duty ——— Light-duty ———  
Medium-duty ——— Unimproved dirt ———  
Interstate Route ——— State Route ———

USGS  
Historical File  
Topographic Division  
BESSEMER, PA.  
N 4052.5—W 8022.5/7.5  
1958  
PHOTOREVISED 1979  
AMS 4965 IV NW—SERIES V831

JUN 18 1979

2400

(EAST PALESTINE)  
496 1/2

(BEAVER FIELDS)  
496 1/2