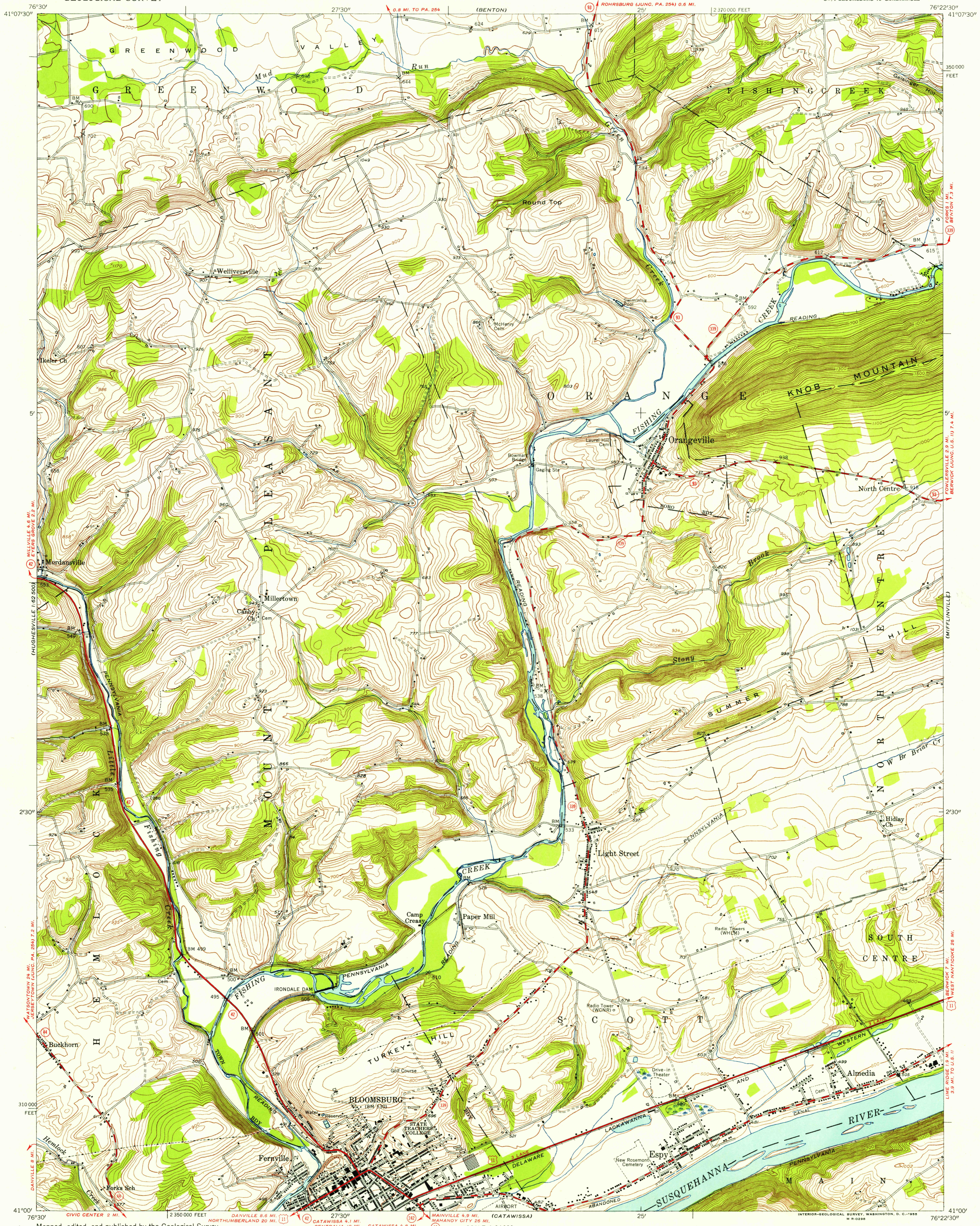
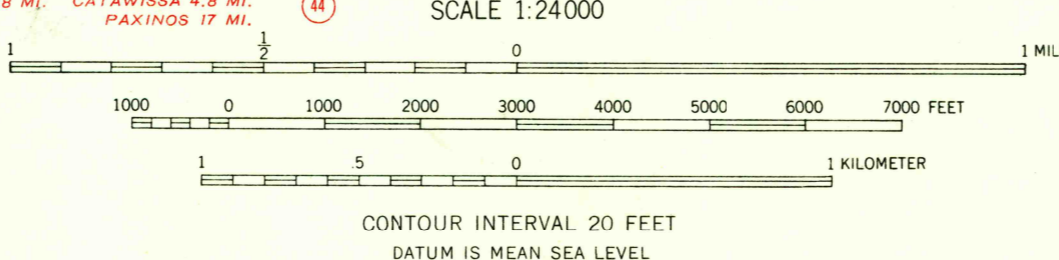


U.S.G.S.
FILE COPY
TOPOGRAPHIC DIVISION



Mapped, edited, and published by the Geological Survey
Control by USGS and USC&GS
Topography from aerial photographs by multiplex methods
Aerial photographs taken 1942. Field check 1944
Culture revised 1953
Polyconic projection. 1927 North American datum
10,000-foot grid based on Pennsylvania coordinate system,
north zone
Unchecked elevations are shown in brown



USGS
Historical File
Topographic Division

ROAD CLASSIFICATION

- Heavy-duty ———— Light-duty ————
- Medium-duty ———— Unimproved dirt ————
- U. S. Route ———— State Route ————

PENNSYLVANIA
QUADRANGLE LOCATION

BLOOMSBURG, PA.
SW/4 BLOOMSBURG 15' QUADRANGLE
N 41°00'—W 76°22'57.5"

U.S.G.S.
FILE COPY
TOPOGRAPHIC DIVISION

DEC 16 1955

3750

THIS MAP COMPLIES WITH NATIONAL MAP ACCURACY STANDARDS
FOR SALE BY U. S. GEOLOGICAL SURVEY, WASHINGTON 25, D. C.
A FOLDER DESCRIBING TOPOGRAPHIC MAPS AND SYMBOLS IS AVAILABLE ON REQUEST