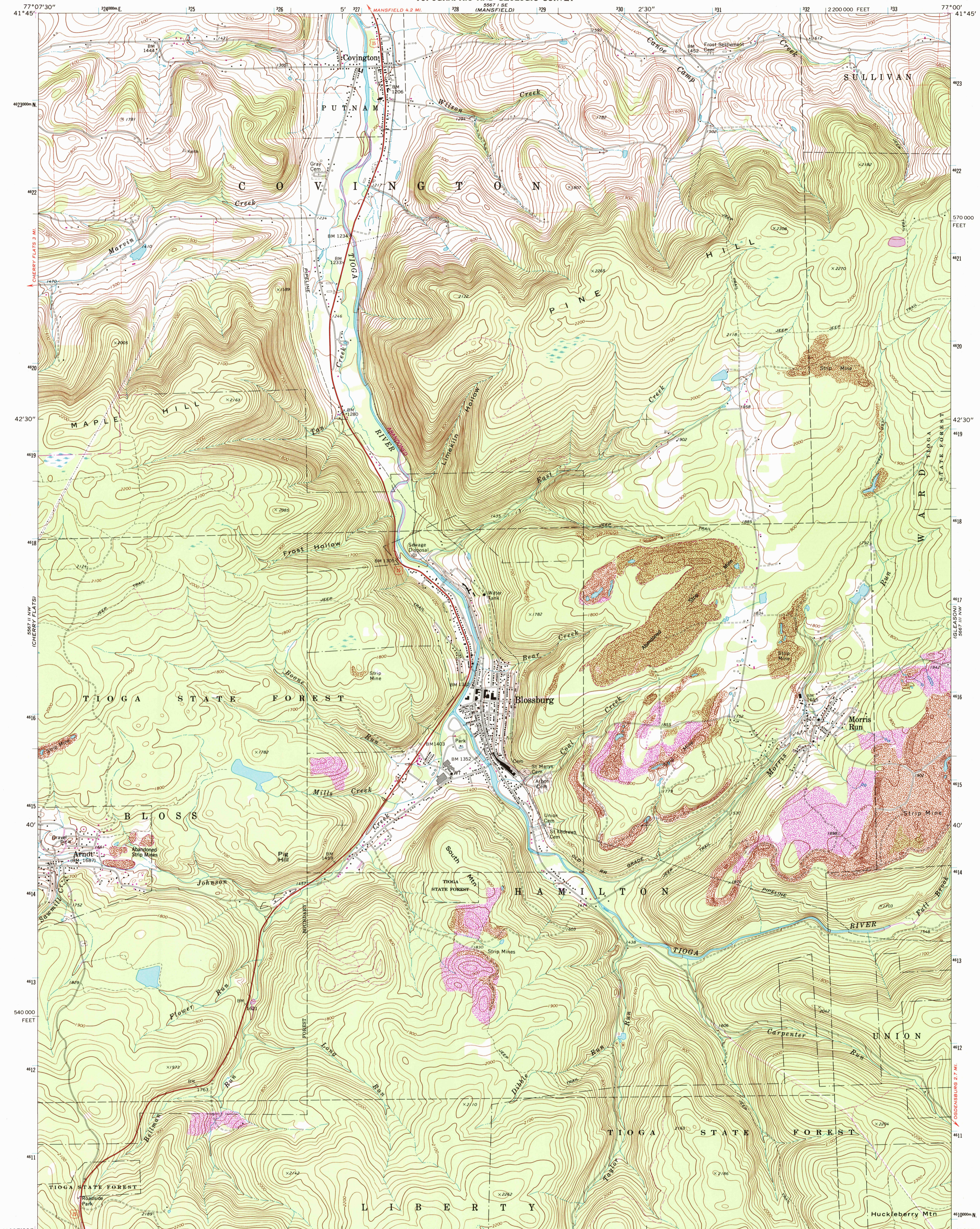




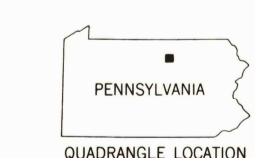
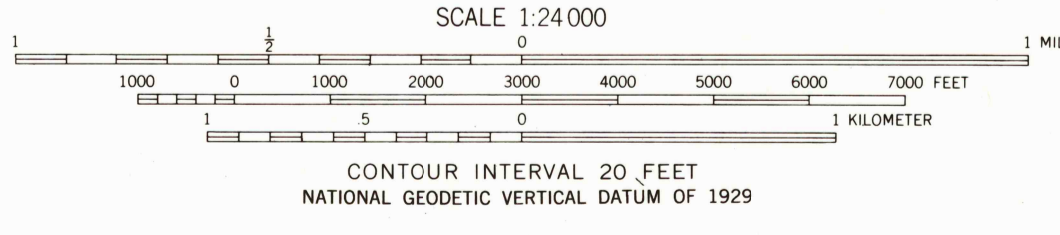
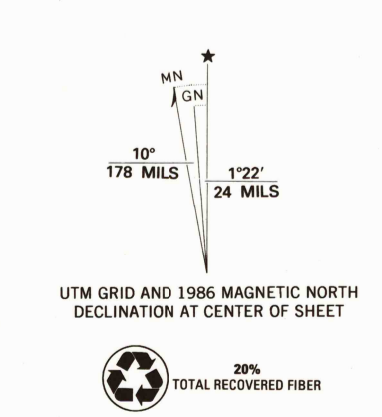
U.S. DEPARTMENT OF THE INTERIOR
U.S. GEOLOGICAL SURVEY

COMMONWEALTH OF PENNSYLVANIA
DEPARTMENT OF ENVIRONMENTAL RESOURCES
TOPOGRAPHIC AND GEOLOGIC SURVEY

BLOSSBURG QUADRANGLE
PENNSYLVANIA—TIOGA CO.
7.5 MINUTE SERIES (TOPOGRAPHIC)



Mapped, edited, and published by the Geological Survey
Control by USGS and USC&GS
Topography by photogrammetric methods from aerial photographs taken 1969 and 1970. Field checked 1970
Polycyclic projection. 1927 North American datum 10,000-foot grid based on Pennsylvania coordinate system, north zone
1000-meter Universal Transverse Mercator grid ticks, zone 18, shown in blue
Fine red dashed lines indicate selected fence and field lines where generally visible on aerial photographs. This information is unchecked
To place on the predicted North American Datum 1983, move the projection lines 4 meters south and 26 meters west as shown by dashed corner ticks
There may be private inholdings within the boundaries of the National or State reservations shown on this map



ROAD CLASSIFICATION
Primary highway, hard surface
Secondary highway, hard surface
Interstate Route
U. S. Route
State Route
Light-duty road, hard or improved surface
Unimproved road
DEC 30 2003
BLOSSBURG, PA.
41077-F1-TF-024
1970
PHOTOREVISED 1986
DMA 5567 II NE-SERIES V831

Revisions shown in purple compiled in cooperation with Commonwealth of Pennsylvania agencies from aerial photographs taken 1983 and other sources. This information not field checked. Map edited 1986



USGS Library
Reston, VA
Topo Archive