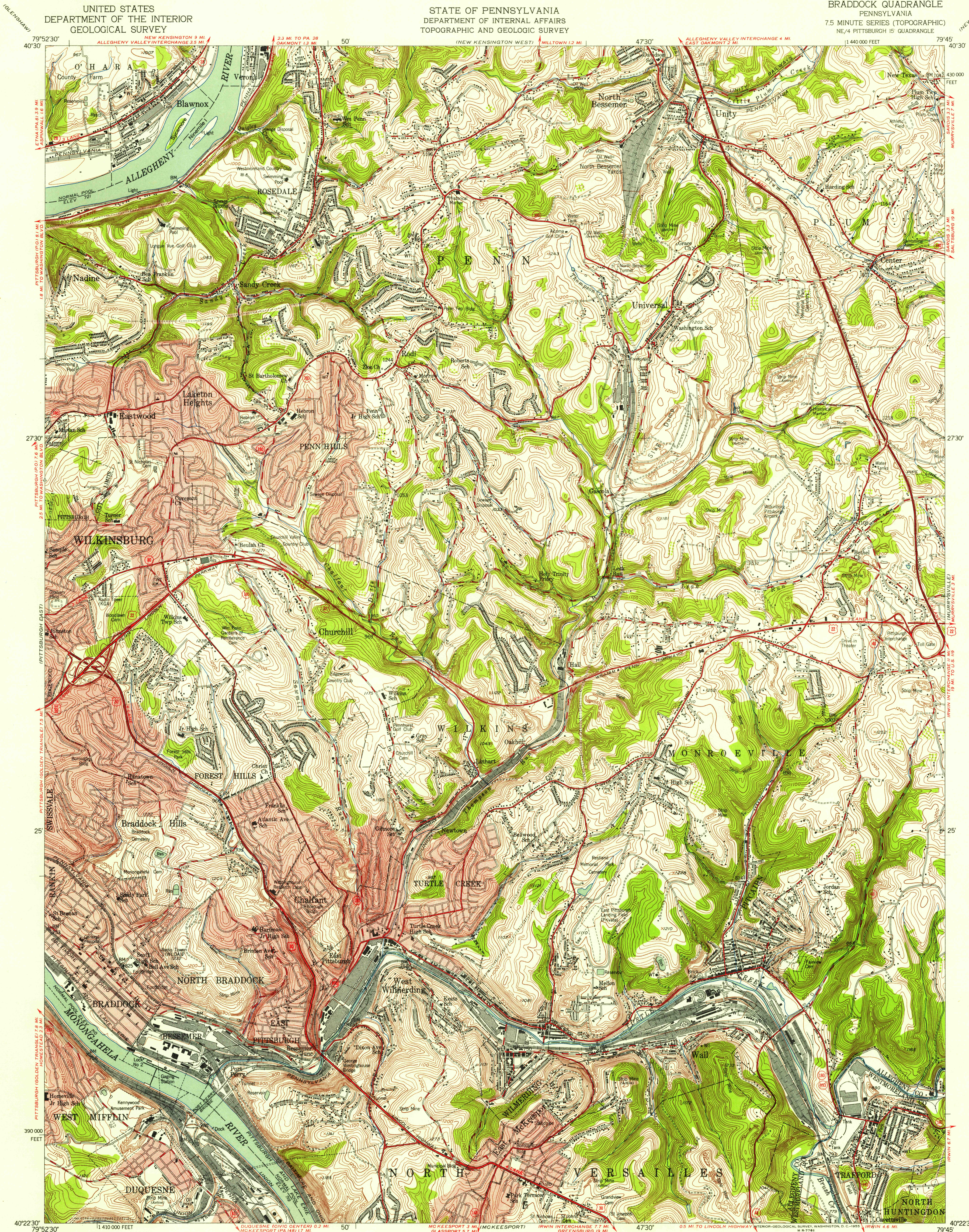


UNITED STATES
DEPARTMENT OF THE INTERIOR
GEOLOGICAL SURVEY

STATE OF PENNSYLVANIA
DEPARTMENT OF INTERNAL AFFAIRS
TOPOGRAPHIC AND GEOLOGIC SURVEY

BRADDOCK QUADRANGLE
PENNSYLVANIA
7.5 MINUTE SERIES (TOPOGRAPHIC)
NE/4 PITTSBURGH 15 QUADRANGLE



Mapped, edited, and published by the Geological Survey
Control by USGS, USC&GS and City of Pittsburgh
Topography from aerial photographs by multiplex methods
Aerial photographs taken 1952. Field check 1953
Polyconic projection. 1927 North American datum
10,000-foot grid based on Pennsylvania coordinate system,
south zone
Red tint indicates areas in which only
landmark buildings are shown
Contours in strip mine and mine dump areas
compiled from 1952 photography
All mining features on this map are inactive
unless otherwise indicated

TRUE NORTH
MAGNETIC NORTH
APPROXIMATE MEAN
DECLINATION, 1953

SCALE 1:24,000
1 0 1000 2000 3000 4000 5000 6000 7000 FEET
1 5 0 1 KILOMETER
CONTOUR INTERVAL 20 FEET
DATUM IS MEAN SEA LEVEL

USGS
Historical
Topographic Division
PENNSYLVANIA
QUADRANGLE LOCATION

ROAD CLASSIFICATION
Heavy-duty ——— Light-duty ———
Medium-duty ——— Unimproved dirt ———
U. S. Route State Route

BRADDOCK, PA.
NE/4 PITTSBURGH 15 QUADRANGLE
N4022.5—W7945/7.5

1953

SEP 8 1955

5758