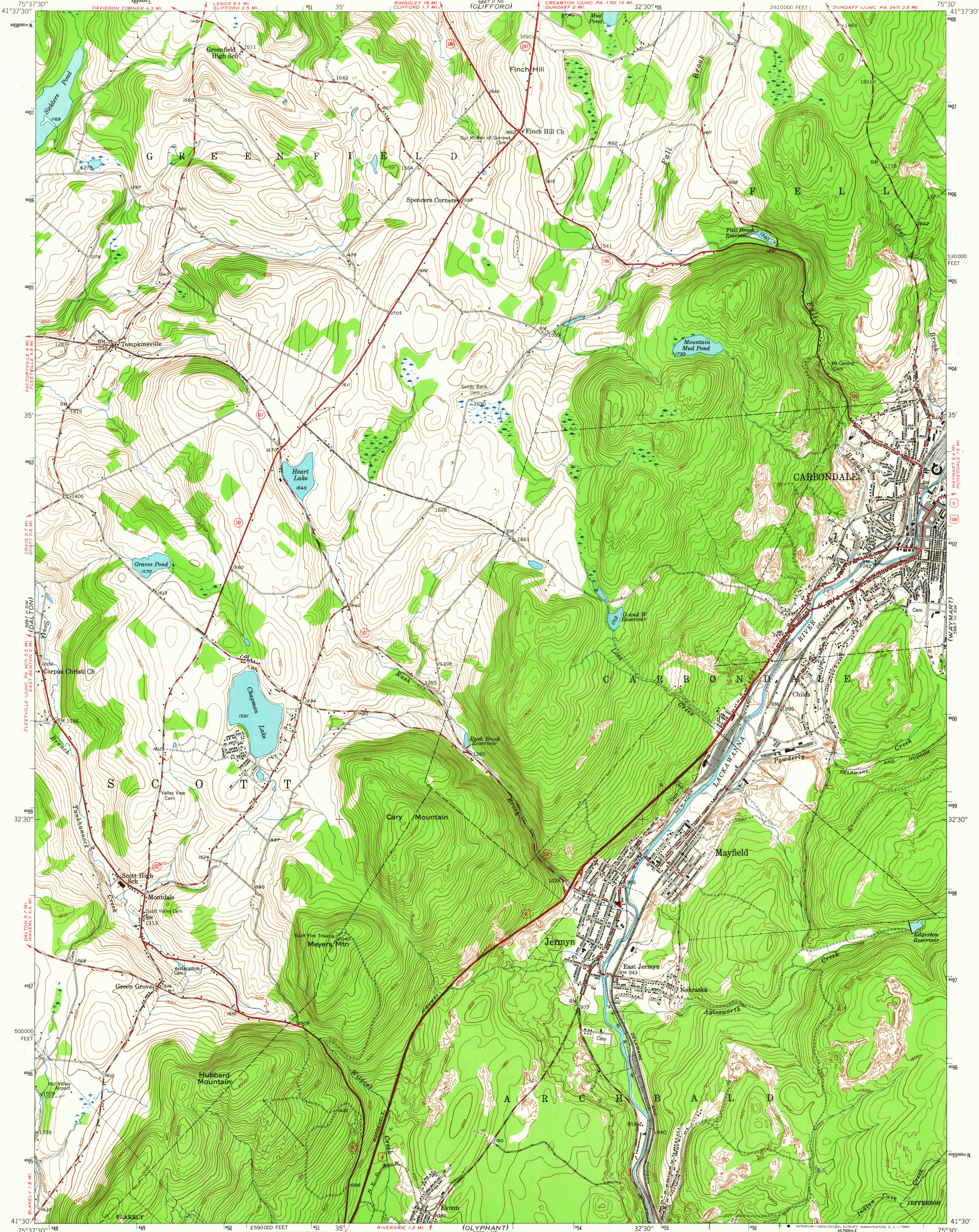
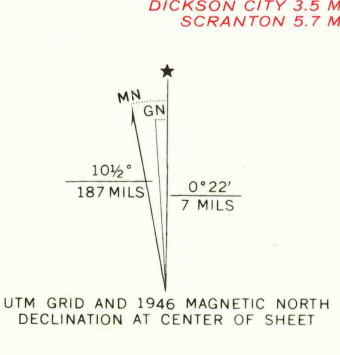


UNITED STATES  
DEPARTMENT OF THE INTERIOR  
GEOLOGICAL SURVEY

CARBONDALE QUADRANGLE  
PENNSYLVANIA-LACKAWANNA CO  
7.5 MINUTE SERIES (TOPOGRAPHIC)



Maped, edited, and published by the Geological Survey  
Control by USGS and USC&GS  
Topography from aerial photographs by multiplex methods  
Aerial photographs taken 1942. Field check 1946  
Polyconic projection. 1927 North American datum  
10,000-foot grid based on Pennsylvania coordinate system,  
north zone  
Contours in strip mine areas compiled from 1942 photography  
1000-meter Universal Transverse Mercator grid ticks,  
zone 18, shown in blue



2590000 FEET  
DICKSON CITY 3.5 MI  
SCRANTON 5.7 MI  
SCALE 1:24,000  
CONTOUR INTERVAL 20 FEET  
DATUM IS MEAN SEA LEVEL  
THIS MAP COMPLIES WITH NATIONAL MAP ACCURACY STANDARDS  
FOR SALE BY U. S. GEOLOGICAL SURVEY, WASHINGTON, D. C. 20242  
A FOLDER DESCRIBING TOPOGRAPHIC MAPS AND SYMBOLS IS AVAILABLE ON REQUEST

USGS  
Historical File  
Topographic Division

ROAD CLASSIFICATION  
HARD-SURFACE ALL WEATHER ROADS DRY WEATHER ROADS  
Heavy-duty 4 LANE 18 LANE Improved dirt  
Medium-duty 4 LANE 18 LANE Unimproved dirt  
Loose-surface, graded, or narrow hard-surface  
U. S. Route State Route

U.S.G.S.  
FILE COPY  
TOPOGRAPHIC DIVISION

CARBONDALE, PA.  
N4130-W7530/7.5  
1946  
AMS 5867 II SE-SERIES V831

2195  
JAN 1 41965