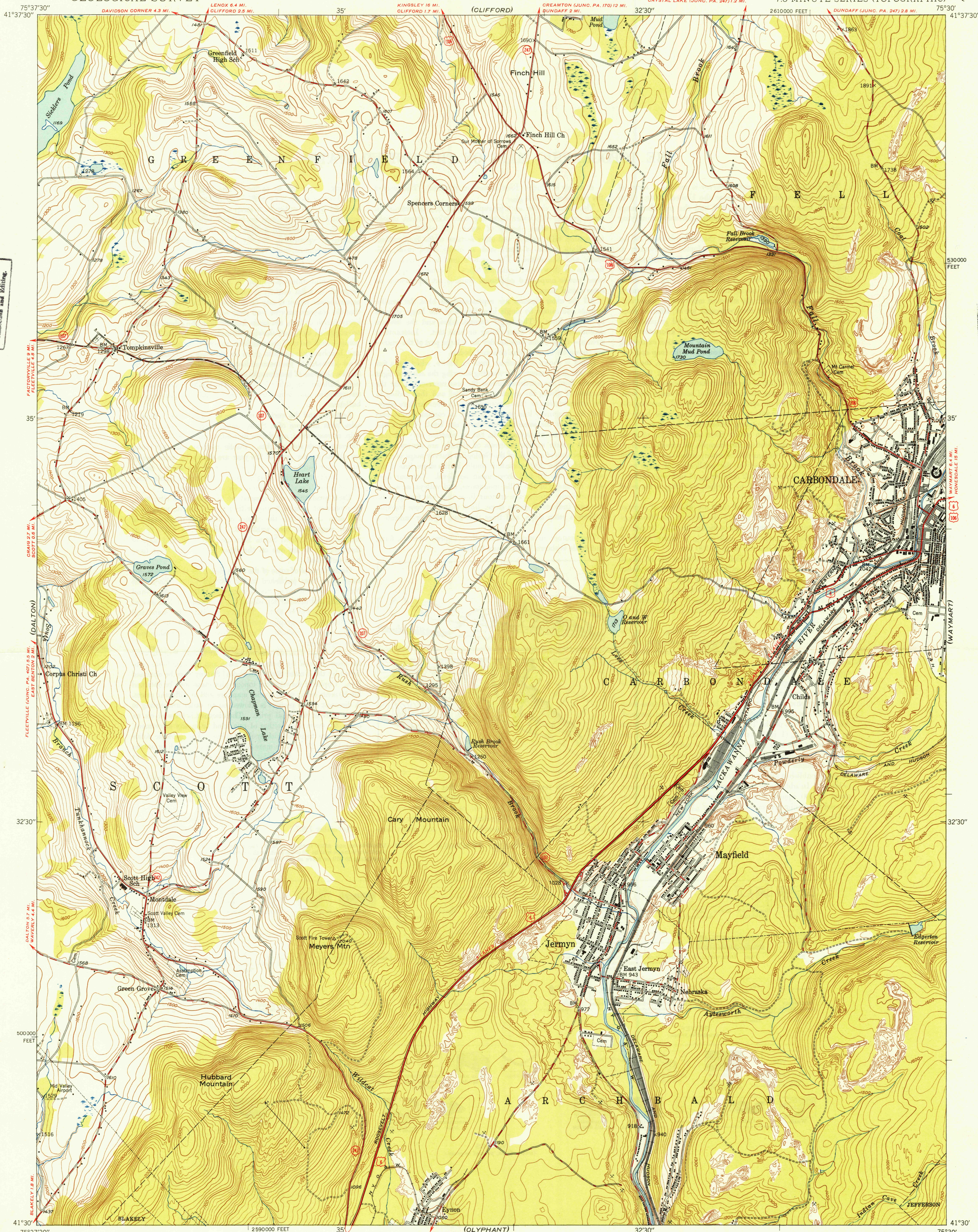


UNITED STATES  
DEPARTMENT OF THE INTERIOR  
GEOLOGICAL SURVEY

CARBONDALE QUADRANGLE  
PENNSYLVANIA-LACKAWANNA CO  
7.5 MINUTE SERIES (TOPOGRAPHIC)

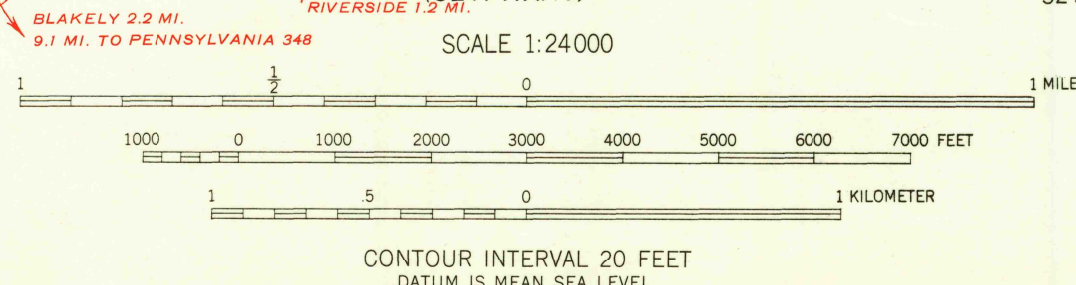


U.S.G.S.  
FILE COPY  
Inspection and Editing

U.S.G.S.  
FILE COPY  
Inspection and Editing

Maped, edited, and published by the Geological Survey  
Control by USGS and USC&GS  
Topography from aerial photographs by multiplex methods  
Aerial photographs taken 1942. Field check 1946  
Polyconic projection. 1927 North American datum  
10,000-foot grid based on Pennsylvania coordinate system,  
north zone  
Contours in strip mine areas compiled from 1942 photography

10°  
TRUE NORTH  
MAGNETIC NORTH  
APPROXIMATE MEAN  
DECLINATION, 1946



THIS MAP COMPLIES WITH NATIONAL MAP ACCURACY STANDARDS  
FOR SALE BY U. S. GEOLOGICAL SURVEY, WASHINGTON 25, D. C.

USGS  
Historical File  
Topographic Division

ROAD CLASSIFICATION  
HARD-SURFACE ALL WEATHER ROADS DRY WEATHER ROADS  
Heavy-duty. — 4 LANE 1/2 LANE Improved dirt. —  
Medium-duty. — 4 LANE 1/2 LANE Unimproved dirt. —  
Loose-surface, graded, or narrow hard-surface. —  
U. S. Route State Route

U.S.G.S.  
FILE COPY  
Inspection and Editing

CARBONDALE, PA.  
N4130—W7530/7.5  
PRINTED 1949  
FEB 23 1949