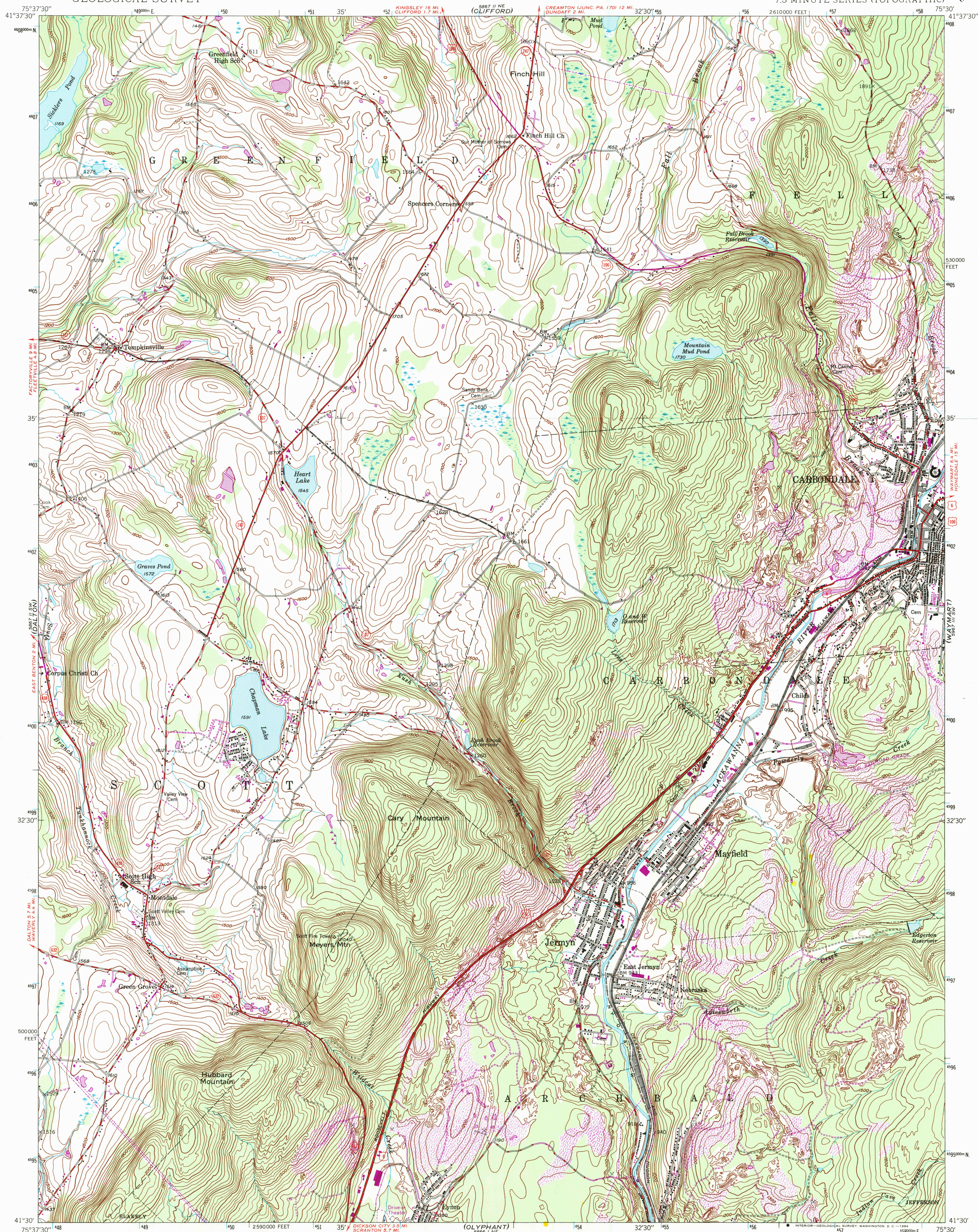


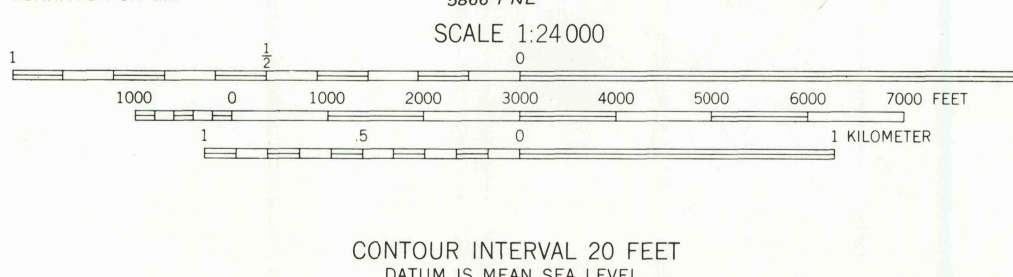
UNITED STATES  
DEPARTMENT OF THE INTERIOR  
GEOLOGICAL SURVEY

CARBONDALE QUADRANGLE  
PENNSYLVANIA-LACKAWANNA CO  
7.5 MINUTE SERIES (TOPOGRAPHIC)



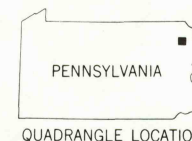
Mapped, edited, and published by the Geological Survey  
Control by USGS and USC&GS  
Topography from aerial photographs by multiplex methods  
Aerial photographs taken 1942. Field check 1946  
Polyconic projection. 1927 North American datum  
10,000-foot grid based on Pennsylvania coordinate system,  
north zone  
Contours in strip mine areas compiled from 1942 photography  
1000-meter Universal Transverse Mercator grid ticks,  
zone 18, shown in blue  
Revisions shown in purple compiled in cooperation with  
State of Pennsylvania agencies from aerial photographs taken 1969  
This information not field checked

UTM GRID AND 1969 MAGNETIC NORTH  
DECLINATION AT CENTER OF SHEET



THIS MAP COMPLIES WITH NATIONAL MAP ACCURACY STANDARDS  
FOR SALE BY U. S. GEOLOGICAL SURVEY, WASHINGTON, D. C. 20242  
A FOLDER DESCRIBING TOPOGRAPHIC MAPS AND SYMBOLS IS AVAILABLE ON REQUEST

Map photoinspected 1980  
No major culture or drainage changes observed



ROAD CLASSIFICATION  
HARD-SURFACE ALL WEATHER ROADS DRY WEATHER ROADS  
Heavy-duty 4 LANE 16 LANE Improved dirt  
Medium-duty 4 LANE 16 LANE Unimproved dirt  
Loose-surface, graded, or narrow hard-surface  
U. S. Route State Route

CARBONDALE, PA.  
N4130-W7530/7.5  
PHOTOINSPECTED 1980  
1946  
PHOTOREVISED 1969  
AMS 5867 II SE-SERIES V831

RETURN TO:  
USGS NHD HISTORICAL MAP ARCHIVES