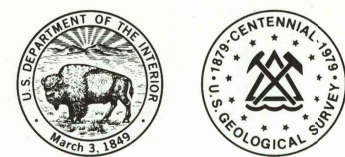
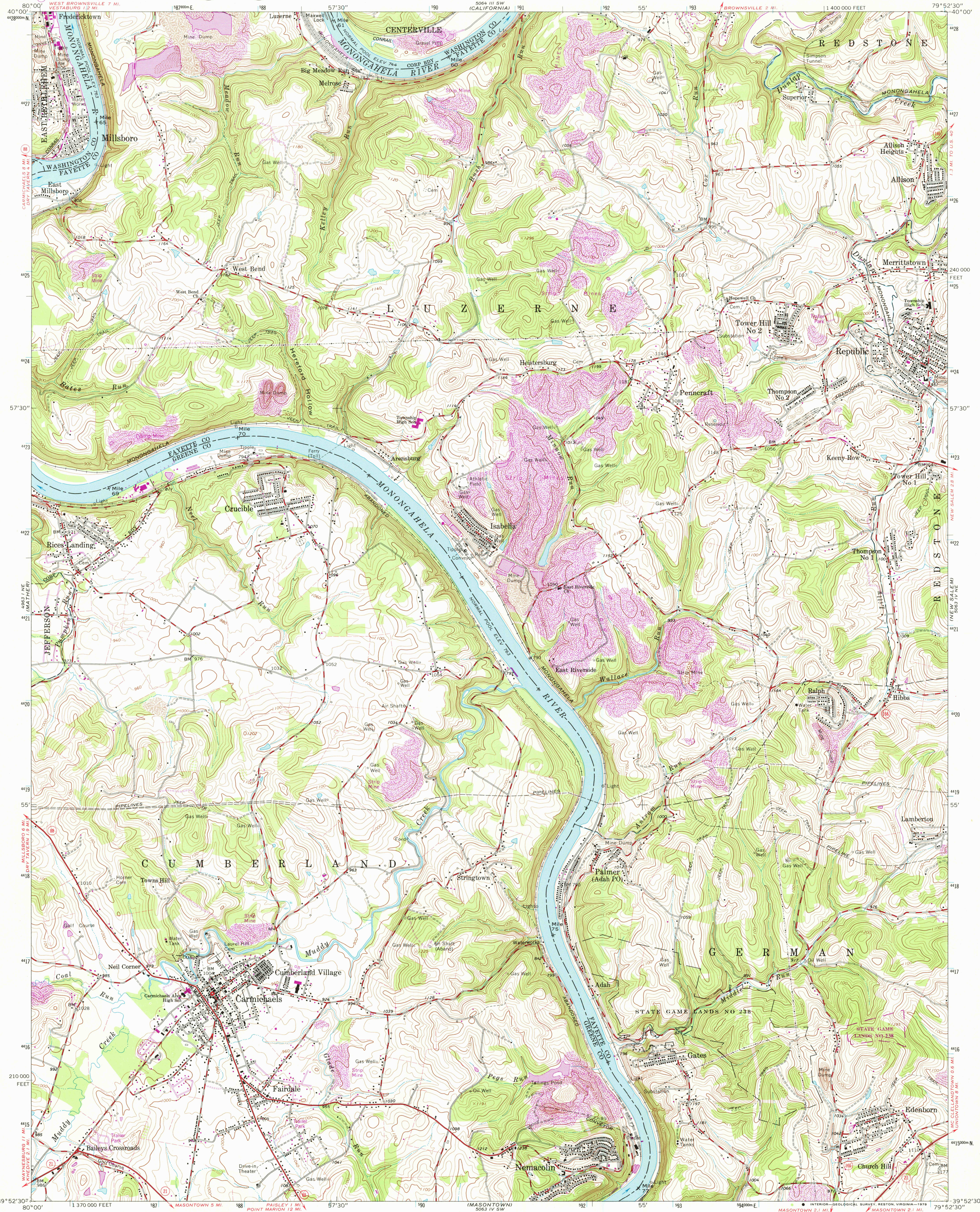


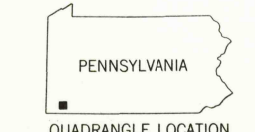
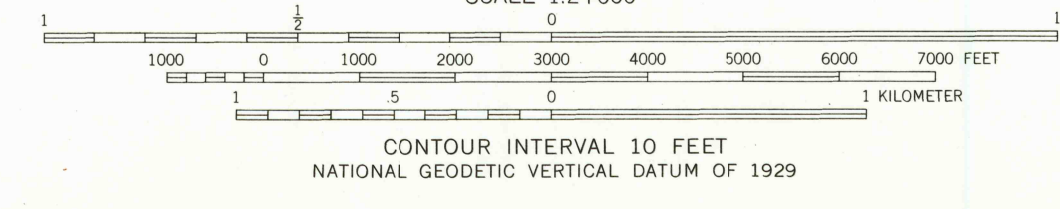
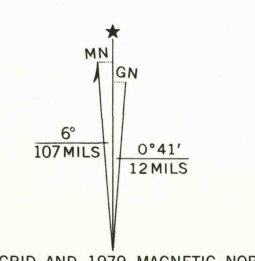
UNITED STATES
DEPARTMENT OF THE INTERIOR
GEOLOGICAL SURVEY



CARMICHAELS QUADRANGLE
PENNSYLVANIA
7.5 MINUTE SERIES (TOPOGRAPHIC)



Mapped, edited, and published by the Geological Survey
Control by USGS, USC&GS, and USCE
Topography by photogrammetric methods from aerial photograph
taken 1962 and 1963. Field checked 1964
Polyconic projection. 1927 North American datum
10,000-foot grid based on Pennsylvania coordinate system, south zone
1000-meter Universal Transverse Mercator grid ticks,
zone 17, shown in blue
Fine red dashed lines indicate selected fence and field lines where
generally visible on aerial photographs. This information is unchecked
There may be private inholdings within the boundaries of
the National or State reservations shown on this map
To place on the predicted North American Datum 1983
move the projection lines 5 meters south and
18 meters west as shown by dashed corner ticks



USGS
Historical File
Topographic Division
CARMICHAELS, PA.
N3952.5-W7952.5/7.5
1964
PHOTOREVISED 1979
AMS 5063 IV NW-SERIES V831

Revisions shown in purple compiled in cooperation with State of
Pennsylvania agencies from aerial photographs taken 1977 and other
source data. This information not field checked. Map edited 1979
Boundary lines shown in purple compiled from latest
information available from the controlling authority

JUL 18 1979