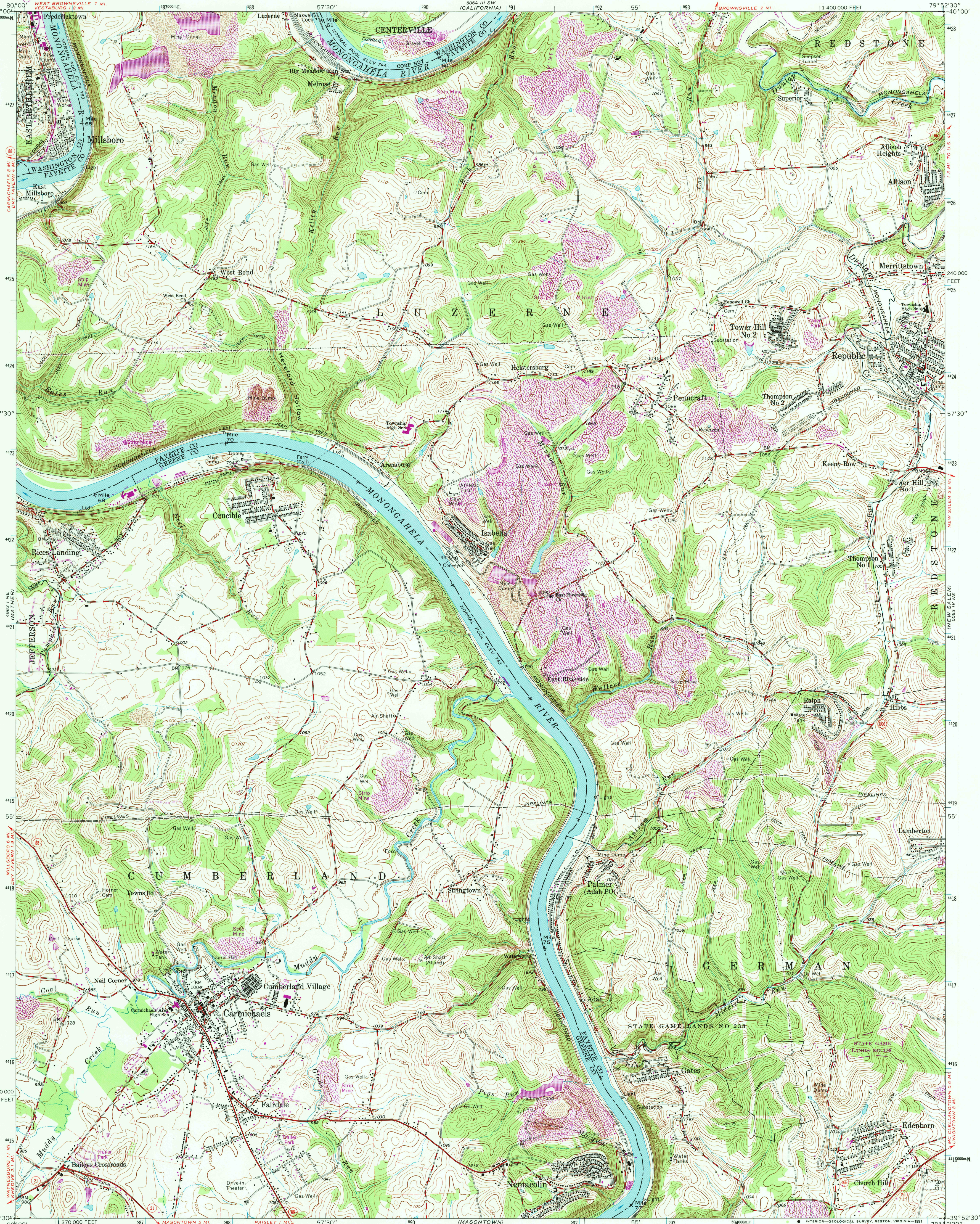


UNITED STATES
DEPARTMENT OF THE INTERIOR
GEOLOGICAL SURVEY

CARMICHAELS QUADRANGLE
PENNSYLVANIA
7.5 MINUTE SERIES (TOPOGRAPHIC)

5000' 1/2" SE
(FAYETTE CITY)



Mapped, edited, and published by the Geological Survey

Control by USGS, USC&GS, and USCE

Topography by photogrammetric methods from aerial photographs taken 1962 and 1963. Field checked 1964

Polyconic projection. 1927 North American datum 10,000-foot grid based on Pennsylvania coordinate system, south zone 1000-meter Universal Transverse Mercator grid ticks, zone 17, shown in blue

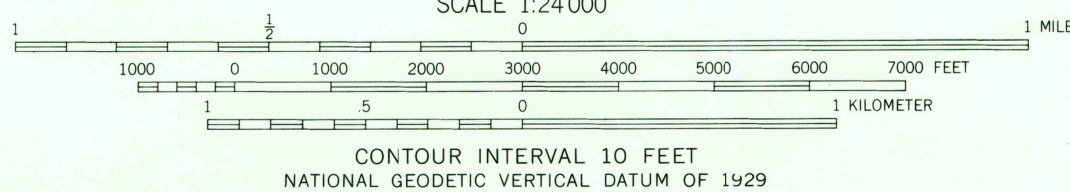
Fine red dashed lines indicate selected fence and field lines where generally visible on aerial photographs. This information is unchecked

There may be private inholdings within the boundaries of the National or State reservations shown on this map

The difference between 1927 North American Datum and North American Datum of 1983 (NAD 83) for 7.5 minute intersections is given in USGS Bulletin 1875. The NAD 83 is shown by dashed corner ticks

Map photorevised 1988
No major culture or drainage changes observed

UTM GRID AND 1979 MAGNETIC NORTH DECLINATION AT CENTER OF SHEET

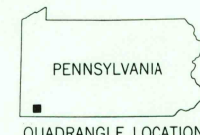


THIS MAP COMPLIES WITH NATIONAL MAP ACCURACY STANDARDS
FOR SALE BY U.S. GEOLOGICAL SURVEY
DENVER, COLORADO 80225, OR RESTON, VIRGINIA 22092
A FOLDER DESCRIBING TOPOGRAPHIC MAPS AND SYMBOLS IS AVAILABLE ON REQUEST

Revisions shown in purple compiled in cooperation with State of Pennsylvania agencies from aerial photographs taken 1977 and other source data. This information not field checked. Map edited 1979

Boundary lines shown in purple compiled from latest information available from the controlling authority

ROAD CLASSIFICATION
Heavy-duty ————— Light-duty —————
Medium-duty ————— Unimproved dirt —————
State Route



CARMICHAELS, PA.

39079-H8-TF-024
PHOTOINSPECTED 1988
1964
PHOTOREVISED 1979
DMA 5063 IV NW-SERIES V831

USGS AND HISTORICAL
MAP ARCHIVES
SEP 19 1991
REC'D FILE COPY