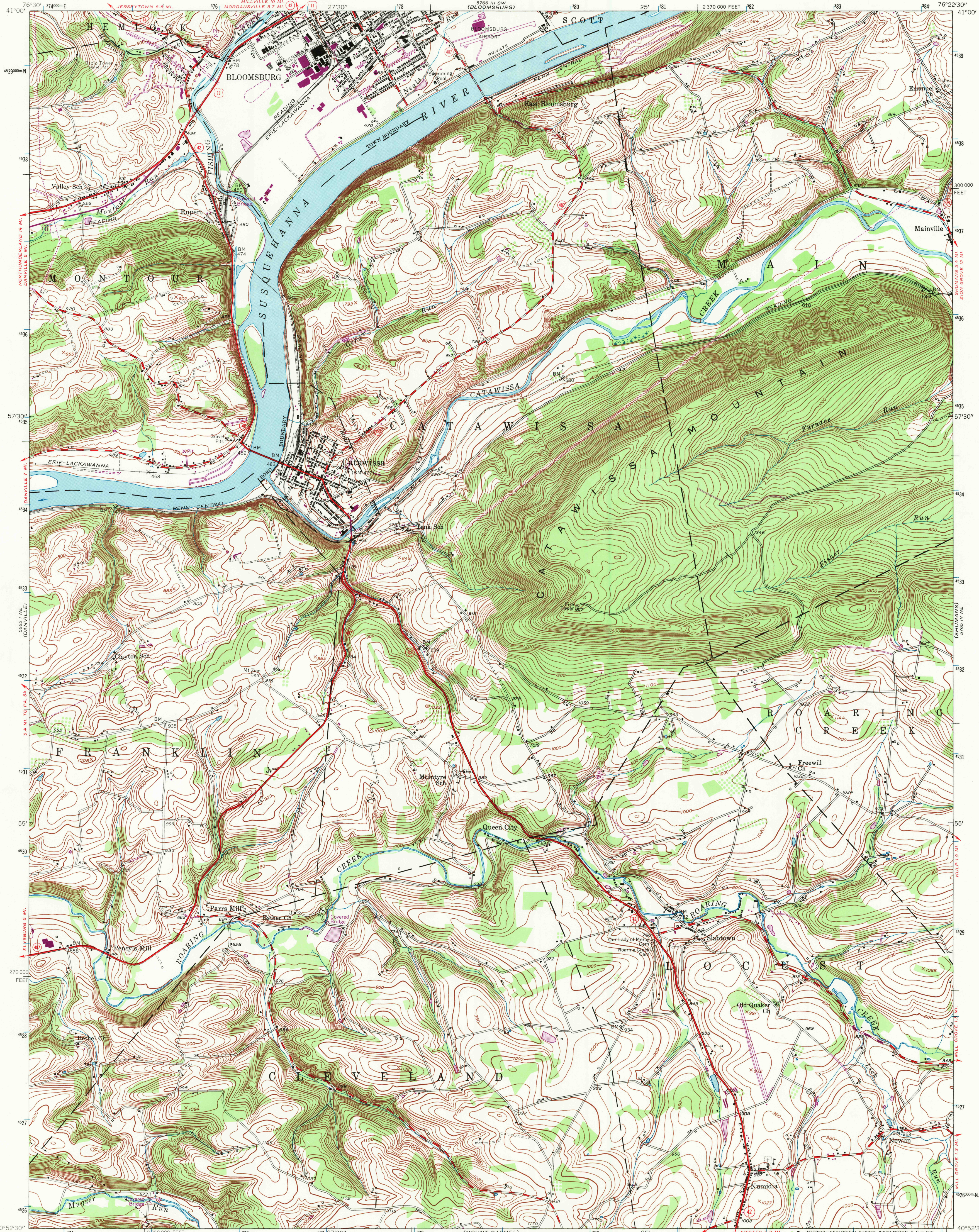
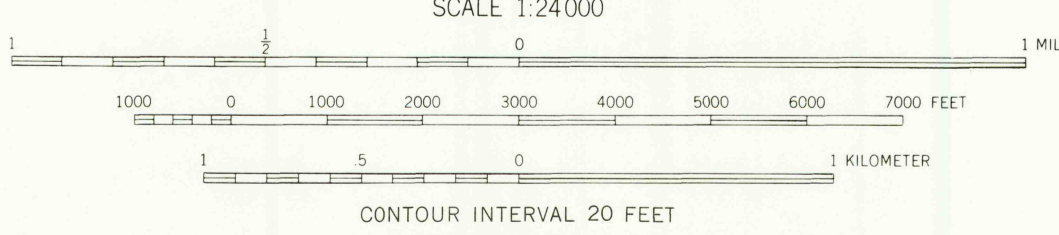
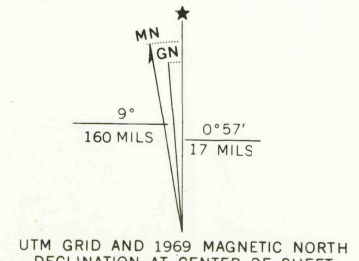


UNITED STATES  
DEPARTMENT OF THE INTERIOR  
GEOLOGICAL SURVEY

CATAWISSA QUADRANGLE  
PENNSYLVANIA—COLUMBIA CO.  
7.5 MINUTE SERIES (TOPOGRAPHIC)  
NW/4 CATAWISSA 15' QUADRANGLE



Mapped, edited, and published by the Geological Survey  
Control by USGS and USC&GS  
Topography from aerial photographs by multiplex methods  
Aerial photographs taken 1942. Field check 1944  
Culture revised 1955  
Polyconic projection. 1927 North American datum  
10,000-foot grid based on Pennsylvania coordinate system,  
north zone  
1000-meter Universal Transverse Mercator grid ticks,  
zone 18, shown in blue  
Revisions shown in purple compiled in cooperation with  
State of Pennsylvania agencies from aerial photographs  
taken 1969. This information not field checked



ROAD CLASSIFICATION  
Heavy-duty ——— Light-duty ———  
Medium-duty ——— Unimproved dirt ———  
U. S. Route ——— State Route ———

CATAWISSA, PA.  
NW/4 CATAWISSA 15' QUADRANGLE  
N4052.5-W7622.5/7.5  
1955  
PHOTOGRAPHED 1969  
AMS 5765 IV NW-SERIES V831

U.S.G.S.  
FILE COPY  
TOPOGRAPHIC DIVISION

THIS MAP COMPLIES WITH NATIONAL MAP ACCURACY STANDARDS  
FOR SALE BY U. S. GEOLOGICAL SURVEY, WASHINGTON, D. C. 20242  
A FOLDER DESCRIBING TOPOGRAPHIC MAPS AND SYMBOLS IS AVAILABLE ON REQUEST

JUL 1 1971