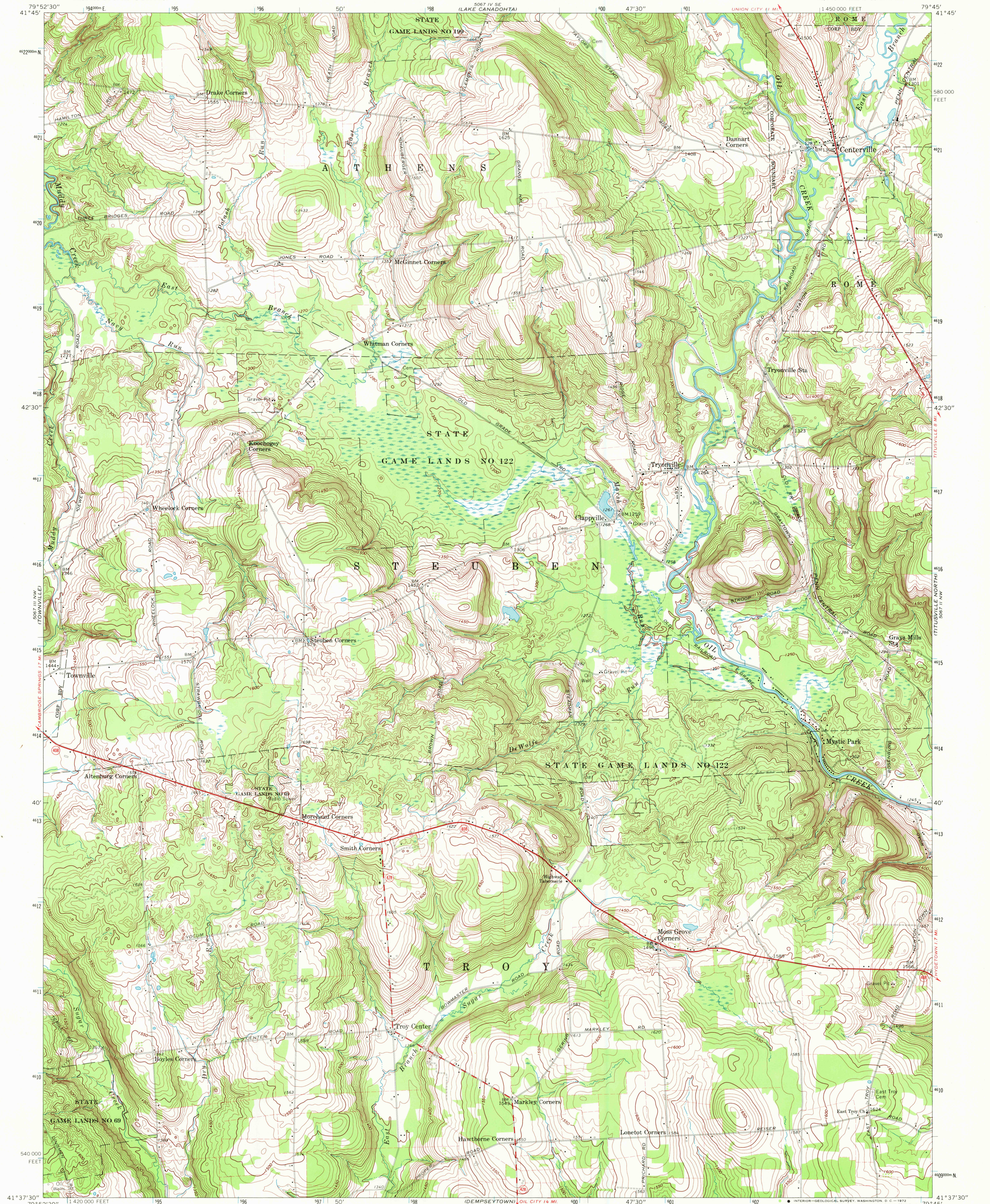


UNITED STATES
DEPARTMENT OF THE INTERIOR
GEOLOGICAL SURVEY

CENTERVILLE QUADRANGLE
PENNSYLVANIA—CRAWFORD CO.
7.5 MINUTE SERIES (TOPOGRAPHIC)
NE/4 TOWNVILLE 15' QUADRANGLE



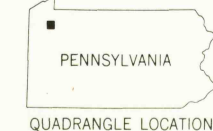
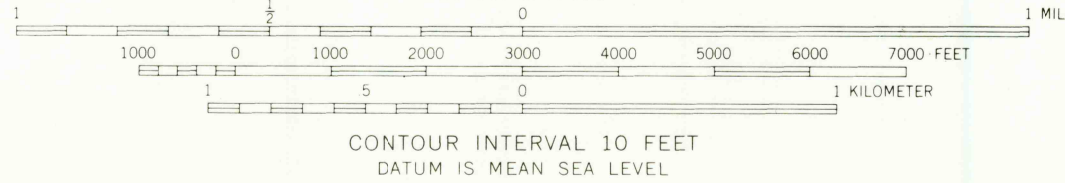
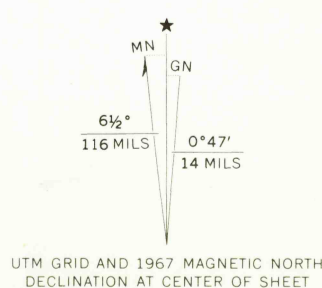
Mapped, edited, and published by the Geological Survey

Control by USGS and USC&GS

Topography by photogrammetric methods from aerial photographs taken 1964 and 1965. Field checked 1967

Polyconic projection. 1927 North American datum
10,000-foot grid based on Pennsylvania coordinate system, north zone
1000-meter Universal Transverse Mercator grid ticks, zone 17, shown in blue

Fine red dashed lines indicate selected fence and field lines where generally visible on aerial photographs. This information is unchecked



ROAD CLASSIFICATION	
Primary highway, hard surface	Light-duty road, hard or improved surface
Secondary highway, hard surface	Unimproved road
Interstate Route	U. S. Route
	State Route

CENTERVILLE, PA.
NE/4 TOWNVILLE 15' QUADRANGLE
N4137.5—W7945.7/5

1967

AMS 5067 III NE—SERIES V831

THIS MAP COMPLIES WITH NATIONAL MAP ACCURACY STANDARDS
FOR SALE BY U. S. GEOLOGICAL SURVEY, WASHINGTON, D. C. 20242
A FOLDER DESCRIBING TOPOGRAPHIC MAPS AND SYMBOLS IS AVAILABLE ON REQUEST

OCT 3 1972

2875

USGS
HISTORICAL FILE
TOPOGRAPHIC DIVISION