

(GENESEE)
1:62,500

UNITED STATES
DEPARTMENT OF THE INTERIOR
GEOLOGICAL SURVEY

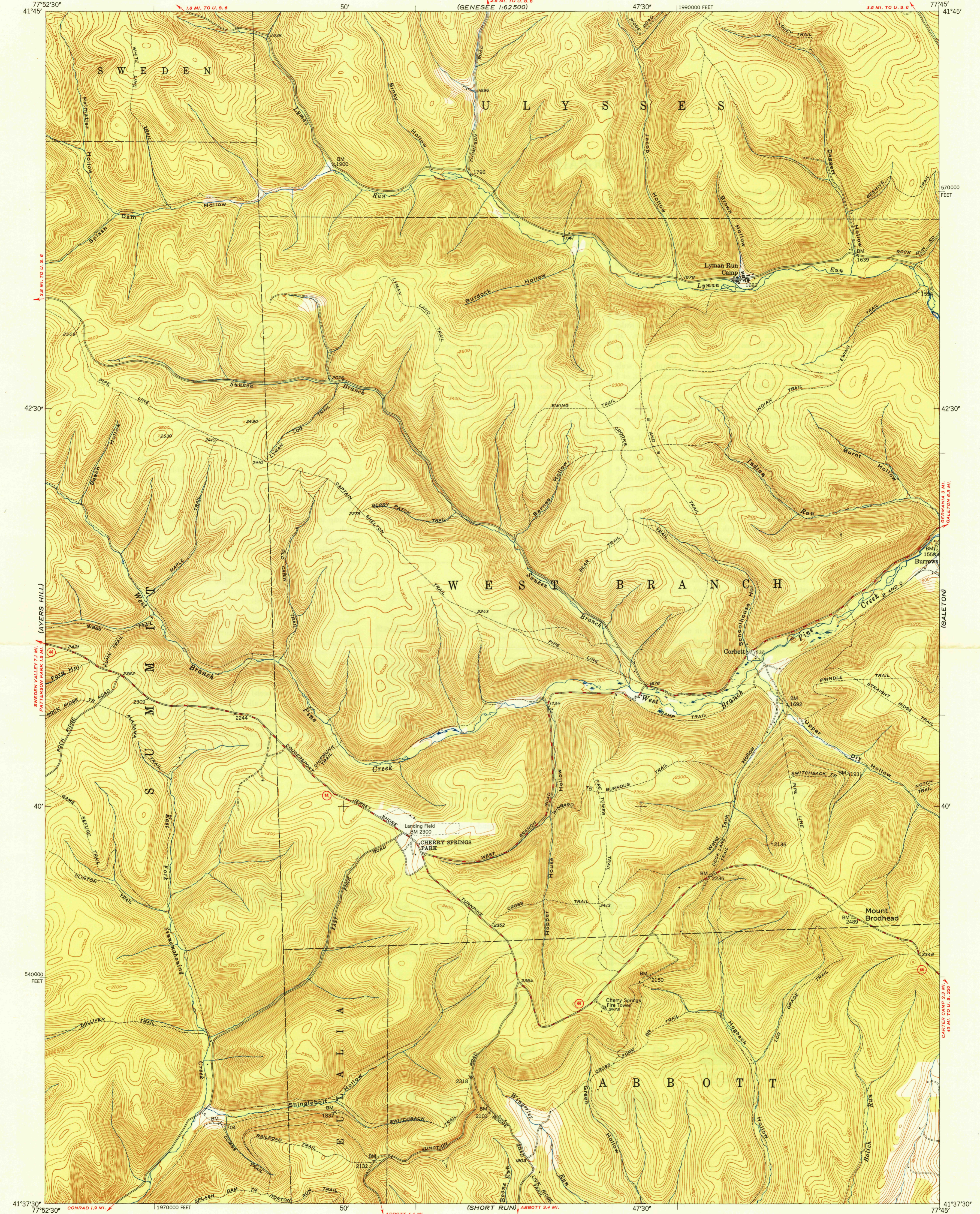
STATE OF PENNSYLVANIA
DEPARTMENT OF INTERNAL AFFAIRS
TOPOGRAPHIC AND GEOLOGIC SURVEY
(GENESEE 1:62,500)

CHERRY SPRINGS QUADRANGLE
PENNSYLVANIA-POTTER CO
7.5 MINUTE SERIES (TOPOGRAPHIC)

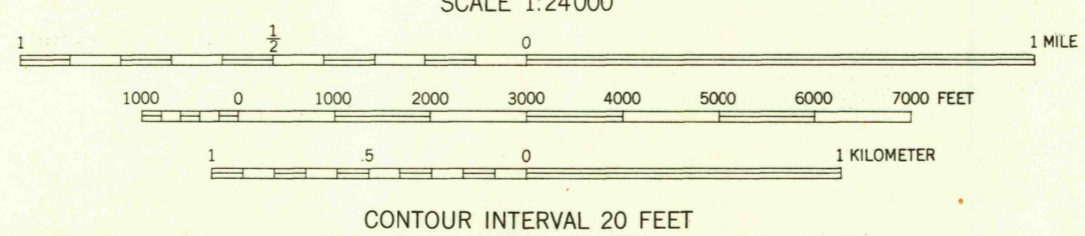
(GENESEE)
1:62,500

U.S.G.S.
FILE COPY
Inspection and Editing

U.S.G.S.
FILE COPY
Inspection and Editing



Mapped, edited, and published by the Geological Survey
Control by USGS and USC&GS
Topography from aerial photographs by multiplex methods
Aerial photographs taken 1945. Field check 1947
Polyconic projection, 1927 North American datum
10,000-foot grid based on Pennsylvania coordinate system,
north zone.



ROAD CLASSIFICATION
 HARD-SURFACE ALL WEATHER ROADS DRY WEATHER ROADS
 Heavy-duty... 4 LANE'S LANE Improved dirt...
 Medium-duty... 4 LANE'S LANE Unimproved dirt...
 Loose-surface, graded, or narrow hard-surface...
 U. S. Route State Route

CHERRY SPRINGS, PA.
N4137.5-W7745/7.5
EDITION OF 1949

THIS MAP COMPLIES WITH NATIONAL MAP ACCURACY STANDARDS
FOR SALE BY U. S. GEOLOGICAL SURVEY, WASHINGTON 25, D. C.

U.S.G.S.
FILE COPY
Inspection and Editing

AUG 11 1949 3195