

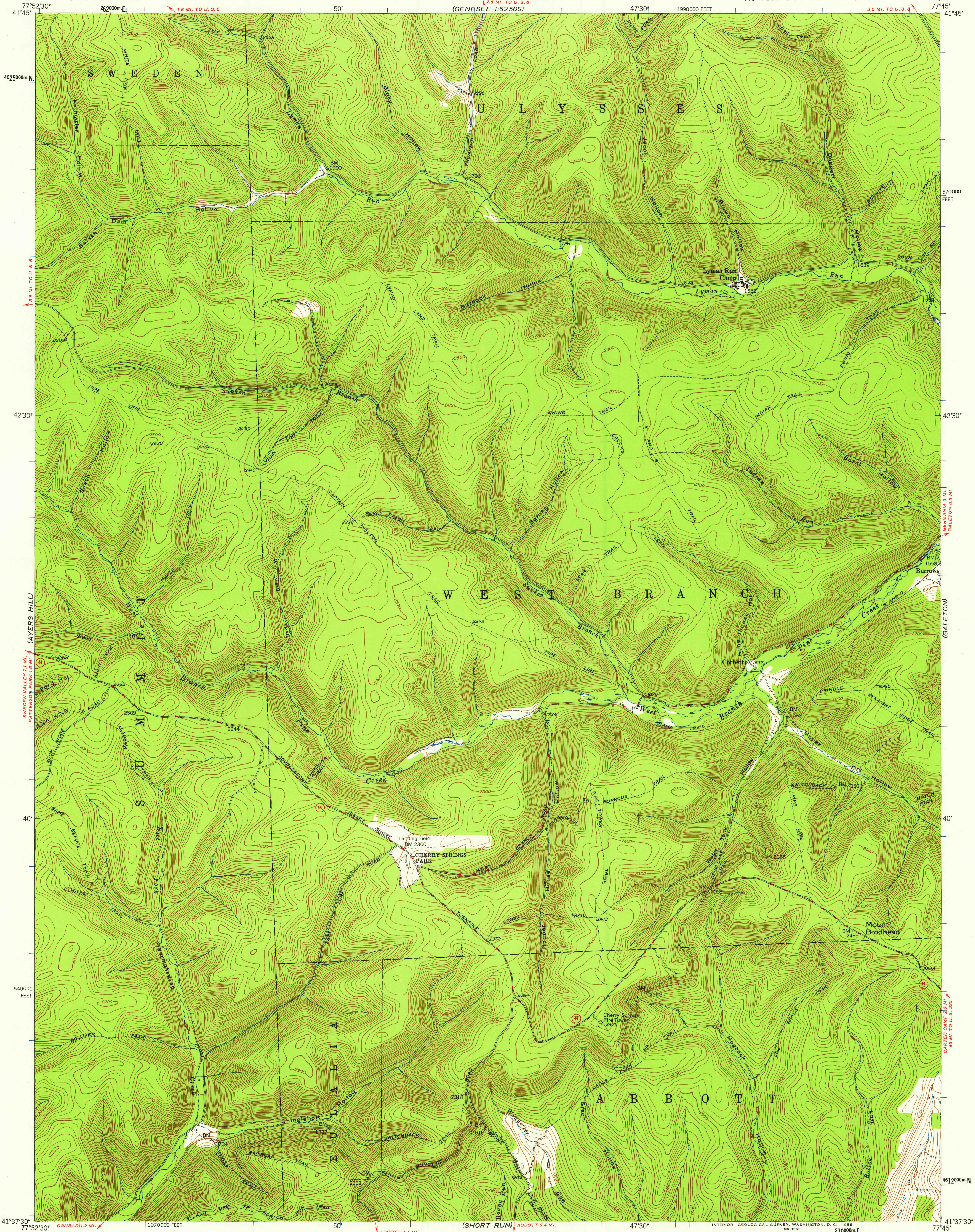
(GENESEE)  
1:62,500

UNITED STATES  
DEPARTMENT OF THE INTERIOR  
GEOLOGICAL SURVEY

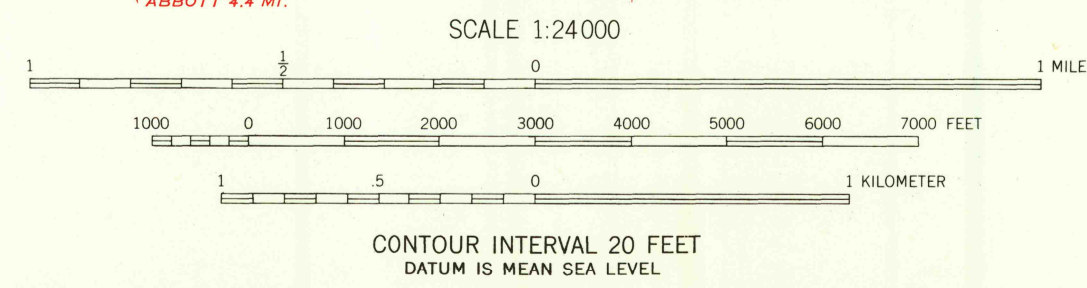
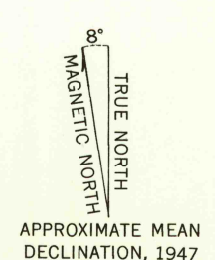
STATE OF PENNSYLVANIA  
DEPARTMENT OF INTERNAL AFFAIRS  
TOPOGRAPHIC AND GEOLOGIC SURVEY

CHERRY SPRINGS QUADRANGLE  
PENNSYLVANIA-POTTER CO  
7.5 MINUTE SERIES (TOPOGRAPHIC)

(GENESEE)  
1:62,500



Mapped, edited, and published by the Geological Survey  
Control by USGS and USGAGS  
Topography from aerial photographs by multiplex methods  
Aerial photographs taken 1945. Field check 1947  
Polyconic projection. 1927 North American datum  
10,000-foot grid based on Pennsylvania coordinate system,  
north zone.  
1000-meter Universal Transverse Mercator grid ticks,  
zone 18, shown in blue



USGS  
Historical File  
Topographic Division

ROAD CLASSIFICATION

HARD-SURFACE ALL WEATHER ROADS	DRY WEATHER ROADS
Heavy-duty... 4 LANE LANE	Improved dirt.....
Medium-duty... 4 LANE LANE	Unimproved dirt.....
Loose-surface, graded, or narrow hard-surface	.....
U. S. Route	State Route

CHERRY SPRINGS, PA.  
N4137.5-W7745/7.5

U.S.G.S.  
FILE COPY  
TOPOGRAPHIC DIVISION  
JUL 25 1958

THIS MAP COMPLIES WITH NATIONAL MAP ACCURACY STANDARDS  
FOR SALE BY U. S. GEOLOGICAL SURVEY, WASHINGTON 25, D. C.  
A FOLDER DESCRIBING TOPOGRAPHIC MAPS AND SYMBOLS IS AVAILABLE ON REQUEST