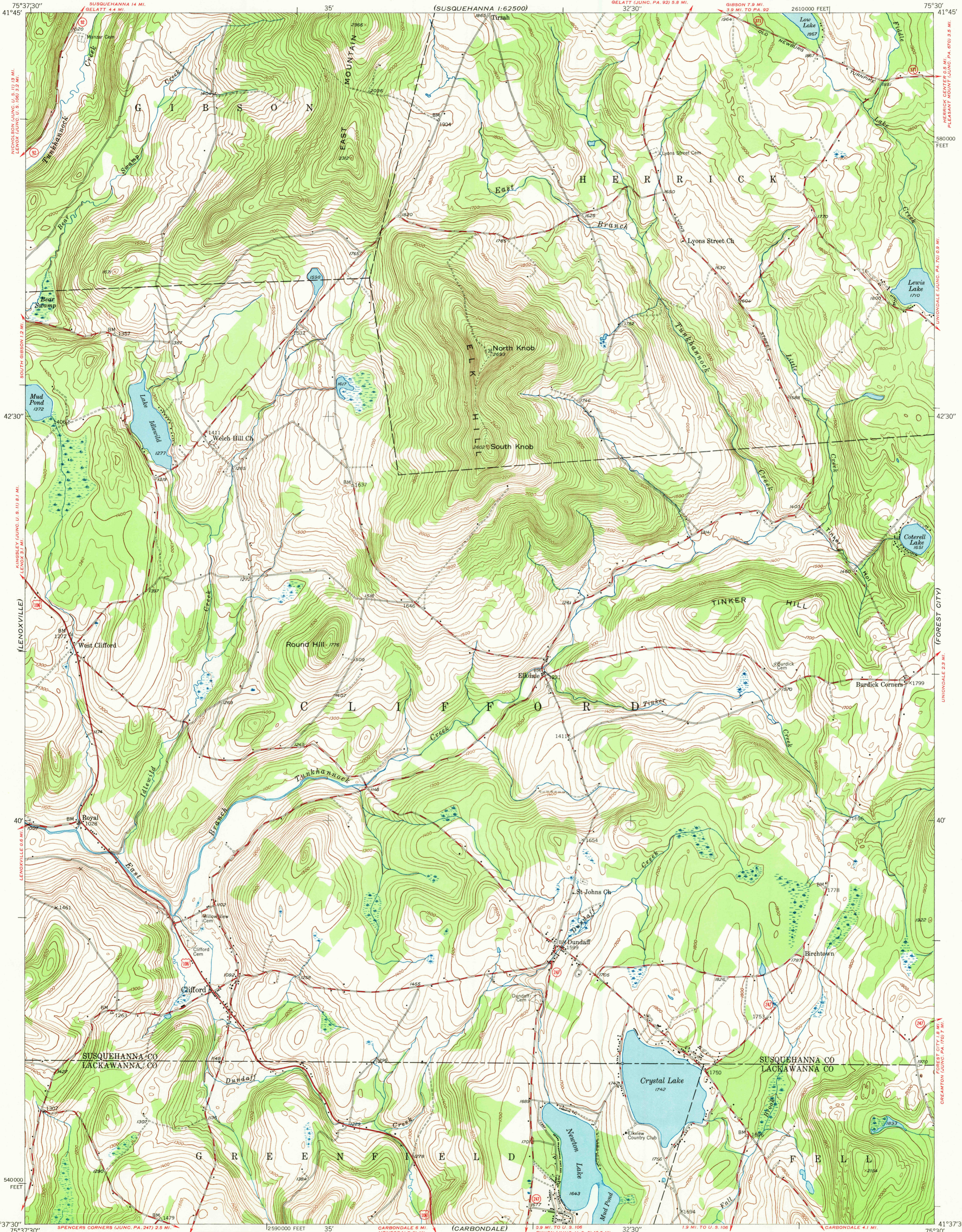
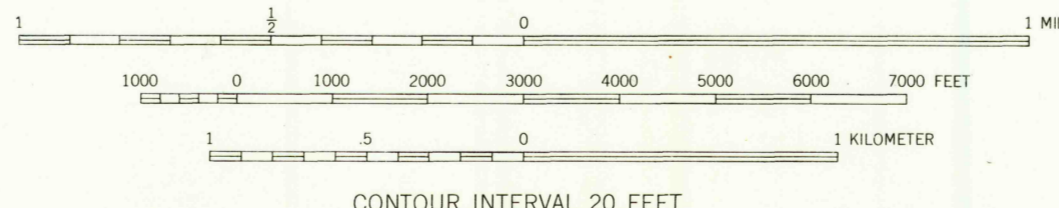


UNITED STATES
DEPARTMENT OF THE INTERIOR
GEOLOGICAL SURVEY

CLIFFORD QUADRANGLE
PENNSYLVANIA
7.5 MINUTE SERIES (TOPOGRAPHIC)



Mapped, edited, and published by the Geological Survey
Control by USGS, and USC&GS
Topography from aerial photographs by multiplex methods
Aerial photographs taken 1942. Field check 1946
Polyconic projection. 1927 North American datum
10,000-foot grid based on Pennsylvania coordinate system,
north zone.



CONTOUR INTERVAL 20 FEET
DATUM IS MEAN SEA LEVEL

ROAD CLASSIFICATION
 HARD-SURFACE ALL WEATHER ROADS DRY WEATHER ROADS
 Heavy-duty... 4 LANE 1/2 LANE Improved dirt...
 Medium-duty... 4 LANE 1/2 LANE Unimproved dirt...
 Loose-surface, graded, or narrow hard-surface...
 U. S. Route State Route

U.S.G.S.
FILE COPY
TOPOGRAPHIC DIVISION

CLIFFORD, PA.
N4137.5-W7530/7.5
PRINTED 1948

THIS MAP COMPLIES WITH NATIONAL MAP ACCURACY STANDARDS
FOR SALE BY U. S. GEOLOGICAL SURVEY, WASHINGTON 25, D. C.

870
APR 9 1969