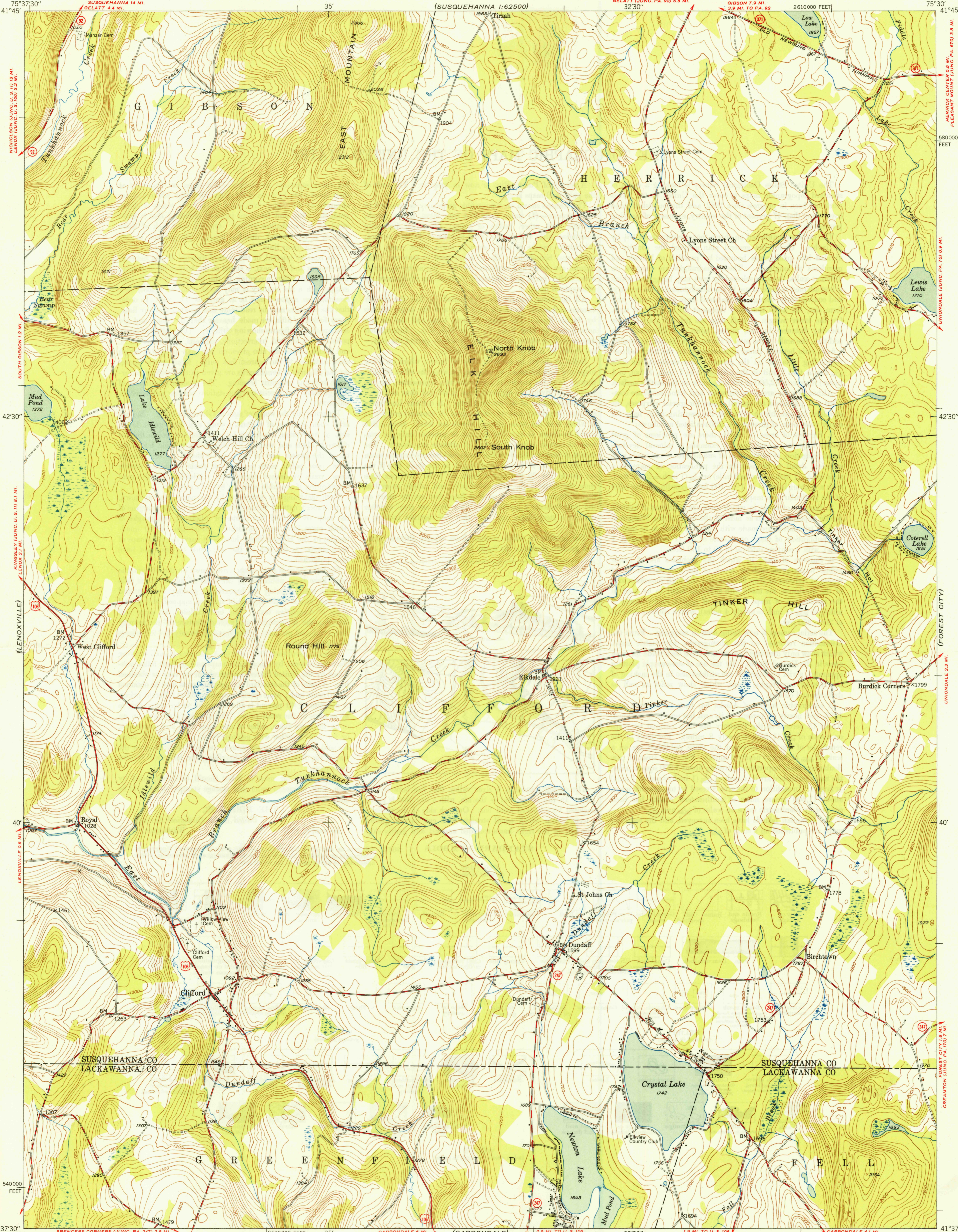


UNITED STATES
DEPARTMENT OF THE INTERIOR
GEOLOGICAL SURVEY

U. S. G. S.
FILE COPY
Inspection and Billing.

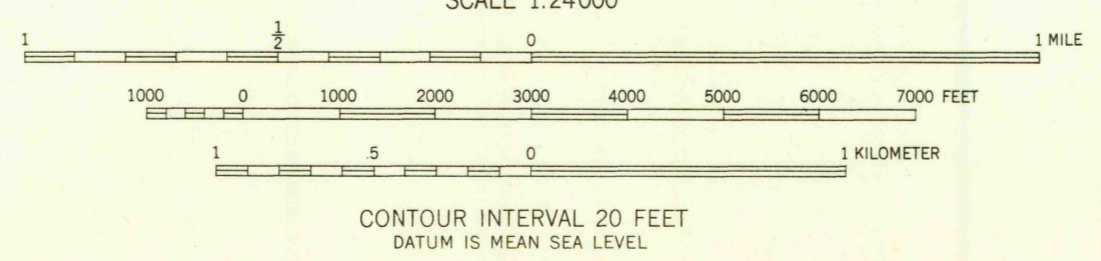
CLIFFORD QUADRANGLE
PENNSYLVANIA
7.5 MINUTE SERIES (TOPOGRAPHIC)



U. S. G. S.
FILE COPY
Inspection and Billing.

U. S. G. S.
FILE COPY
Inspection and Billing.

Mapped, edited, and published by the Geological Survey
Control by USGS, and USC&GS
Topography from aerial photographs by multiple methods
Aerial photographs taken 1942. Field check 1946
Polyconic projection. 1927 North American datum
10,000-foot grid based on Pennsylvania coordinate system,
north zone.



ROAD CLASSIFICATION

HARD-SURFACE ALL WEATHER ROADS	DRY WEATHER ROADS
Heavy-duty - 4 LANE LANE	Improved dirt
Medium-duty - 4 LANE LANE	Unimproved dirt
Loose-surface, graded, or narrow hard-surface	
U. S. Route	State Route

USGS
Historical File
Topographic Division

U. S. G. S.
FILE COPY
Inspection and Billing.

CLIFFORD, PA.
N4137.5-W7530/7.5
PRINTED 1946
JAN 19 1949

THIS MAP COMPLIES WITH NATIONAL MAP ACCURACY STANDARDS
FOR SALE BY U. S. GEOLOGICAL SURVEY, WASHINGTON 25, D. C.

3220