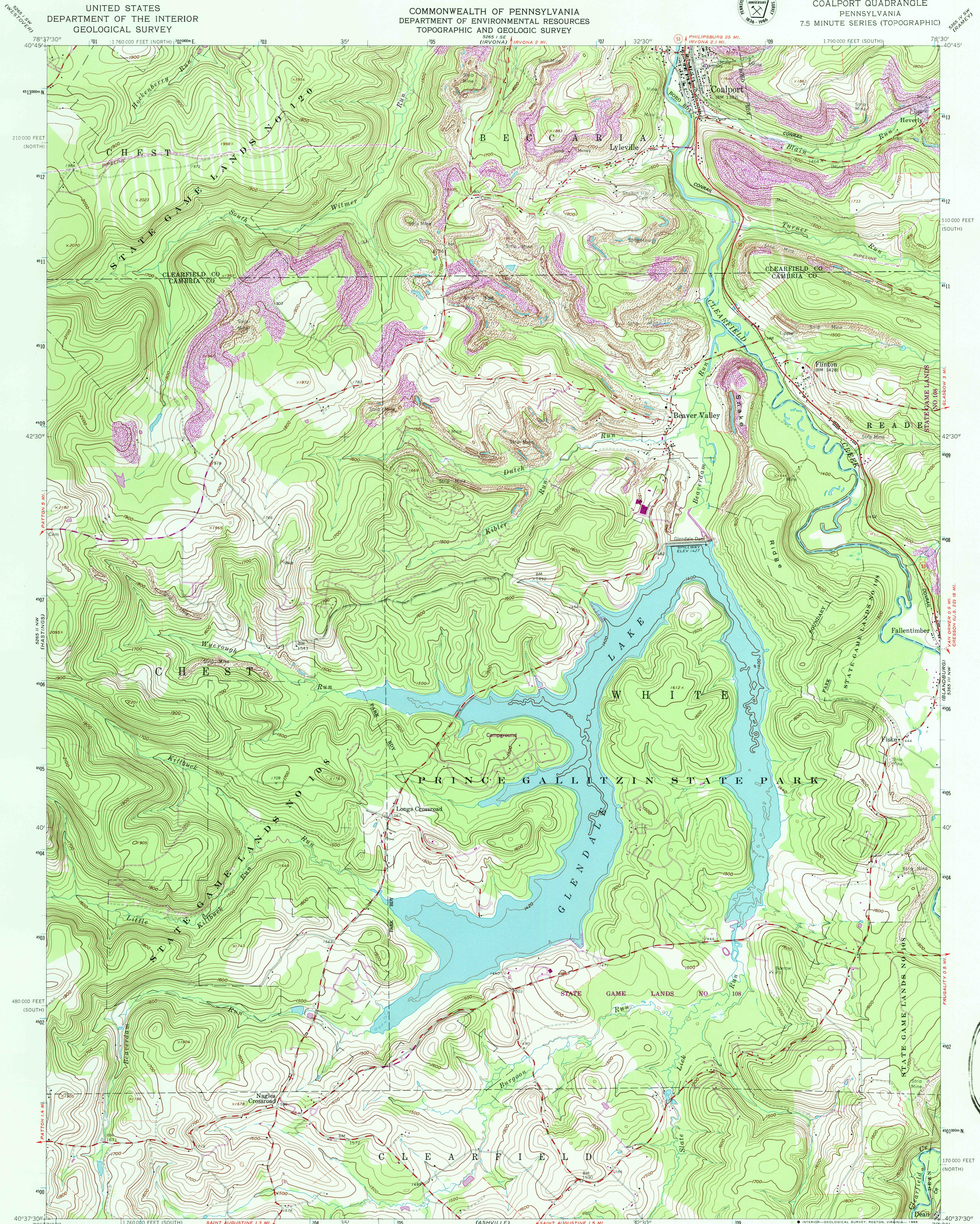


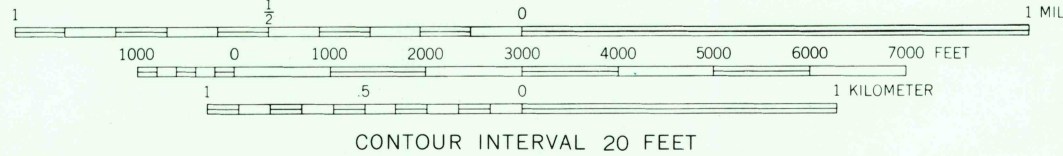
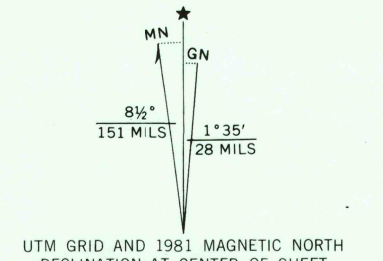


5265 IV SW
(AM 17)



Mapped, edited, and published by the Geological Survey

Control by USGS and NOS/NOAA
Topography by photogrammetric methods from aerial photographs taken 1958. Field checked 1961
Polyconic projection. 10,000-foot grid ticks based on Pennsylvania coordinate system, south and north zones 1000-meter Universal Transverse Mercator grid ticks, zone 17, shown in blue. 1927 North American Datum
To place on the predicted North American Datum 1983 move the projection lines 4 meters south and 22 meters west as shown by dashed corner ticks
Fine red dashed lines indicate selected fence and field lines where generally visible on aerial photographs. This information is unchecked
There may be private inholdings within the boundaries of the National or State reservations shown on this map

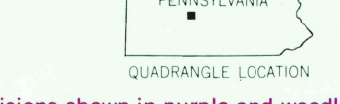


CONTOUR INTERVAL 20 FEET
NATIONAL GEODETIC VERTICAL DATUM OF 1929

THIS MAP COMPLIES WITH NATIONAL MAP ACCURACY STANDARDS
FOR SALE BY U.S. GEOLOGICAL SURVEY, DENVER, COLORADO 80225
OR RESTON, VIRGINIA 22092
A FOLDER DESCRIBING TOPOGRAPHIC MAPS AND SYMBOLS IS AVAILABLE ON REQUEST

ROAD CLASSIFICATION

Heavy-duty	Light-duty
Medium-duty	Unimproved dirt
State Route	



COALPORT, PA.
40078-F5-TF-024

1961
PHOTOREVISED 1981
DMA 5265 II NE-SERIES V851

USGS AND HISTORICAL MAP
NOV 23 1986
REC'D FILE COPY

CARROLL TOWN
5265 II SW

41 TOWN
5265 III SW