

MIDDLE TOWN  
1:62,500

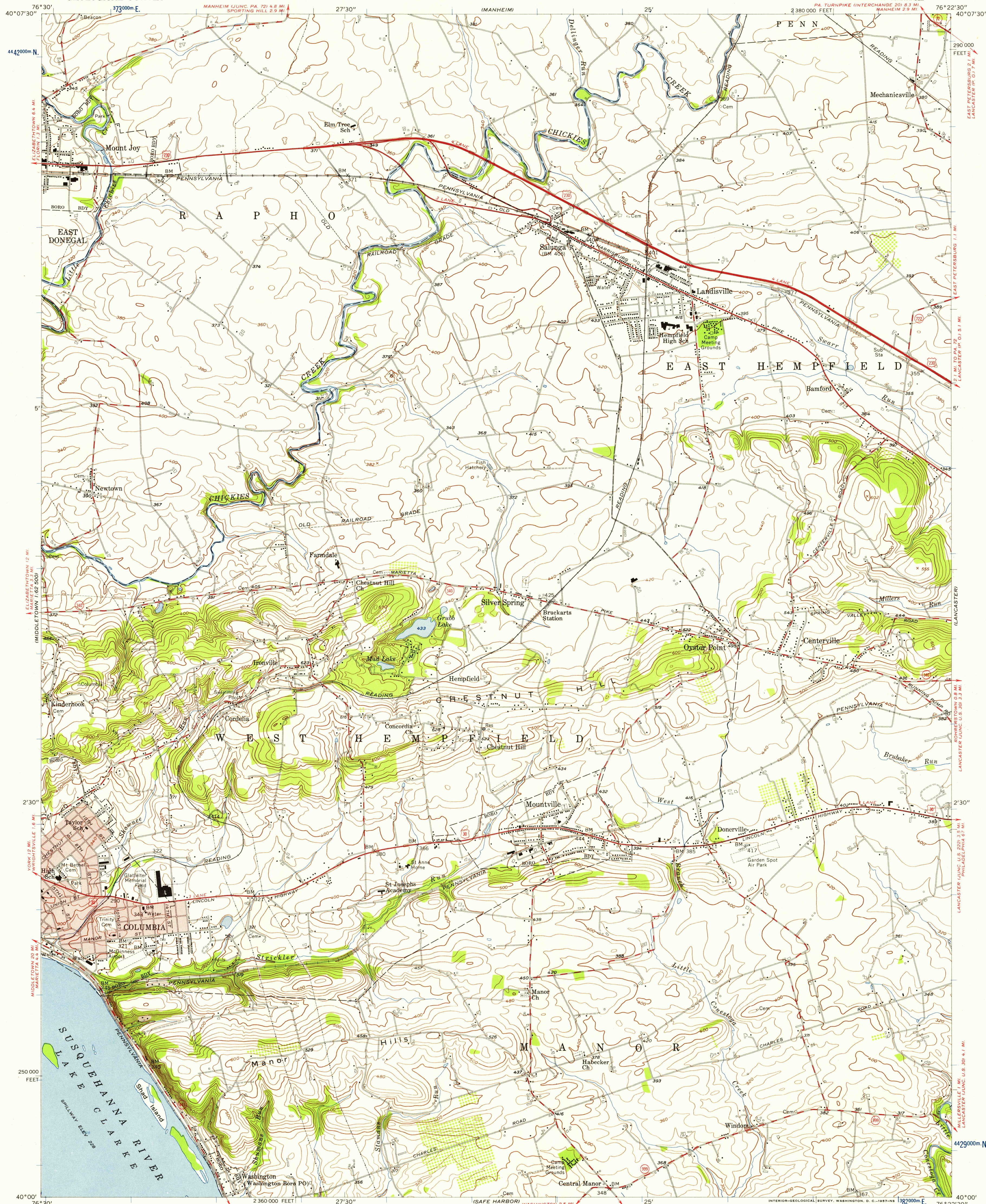
UNITED STATES  
DEPARTMENT OF THE INTERIOR  
GEOLOGICAL SURVEY

COLUMBIA EAST QUADRANGLE  
PENNSYLVANIA-LANCASTER CO.  
7.5 MINUTE SERIES (TOPOGRAPHIC)

SW 1/4 LANCASTER 15' QUADRANGLE

PA TURNPIKE INTERCHANGE 20.8 MI  
MANHEIM 2.9 MI

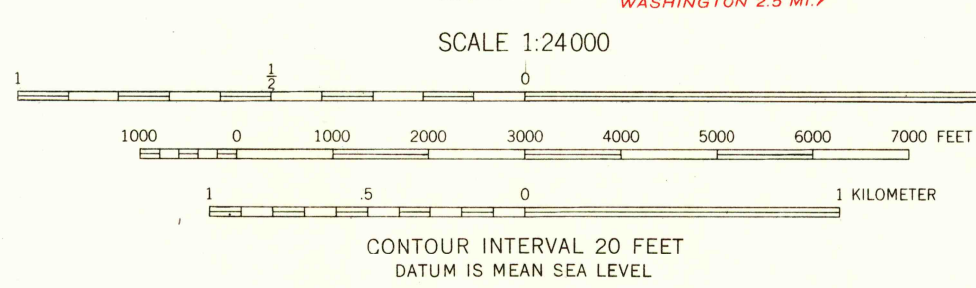
(UTM)



U.S.G.S.  
FILE COPY  
TOPOGRAPHIC DIVISION

Mapped, edited, and published by the Geological Survey  
Control by USGS and USC&GS  
Topography from aerial photographs by stereopair  
Aerial photographs taken 1951. Field check 1956  
Polyconic projection. 1927 North American datum  
10,000-foot grid based on Pennsylvania coordinate system,  
south zone  
1000-meter Universal Transverse Mercator grid ticks,  
zone 18, shown in blue  
Red tint indicates area in which only  
landmark buildings are shown  
Unchecked elevations are shown in brown

APPROXIMATE MEAN  
DECLINATION, 1956



USGS  
Historical File  
Topographic Division

PENNSYLVANIA  
QUADRANGLE LOCATION

ROAD CLASSIFICATION  
Heavy-duty ——— Light-duty ———  
Medium-duty ——— Unimproved dirt ———  
U.S. Route ——— State Route ———

COLUMBIA EAST, PA.  
SW 1/4 LANCASTER 15' QUADRANGLE  
N4000-W7622.5/7.5

U.S.G.S.  
FILE COPY  
TOPOGRAPHIC DIVISION

1956

MAY 7 1957

3705