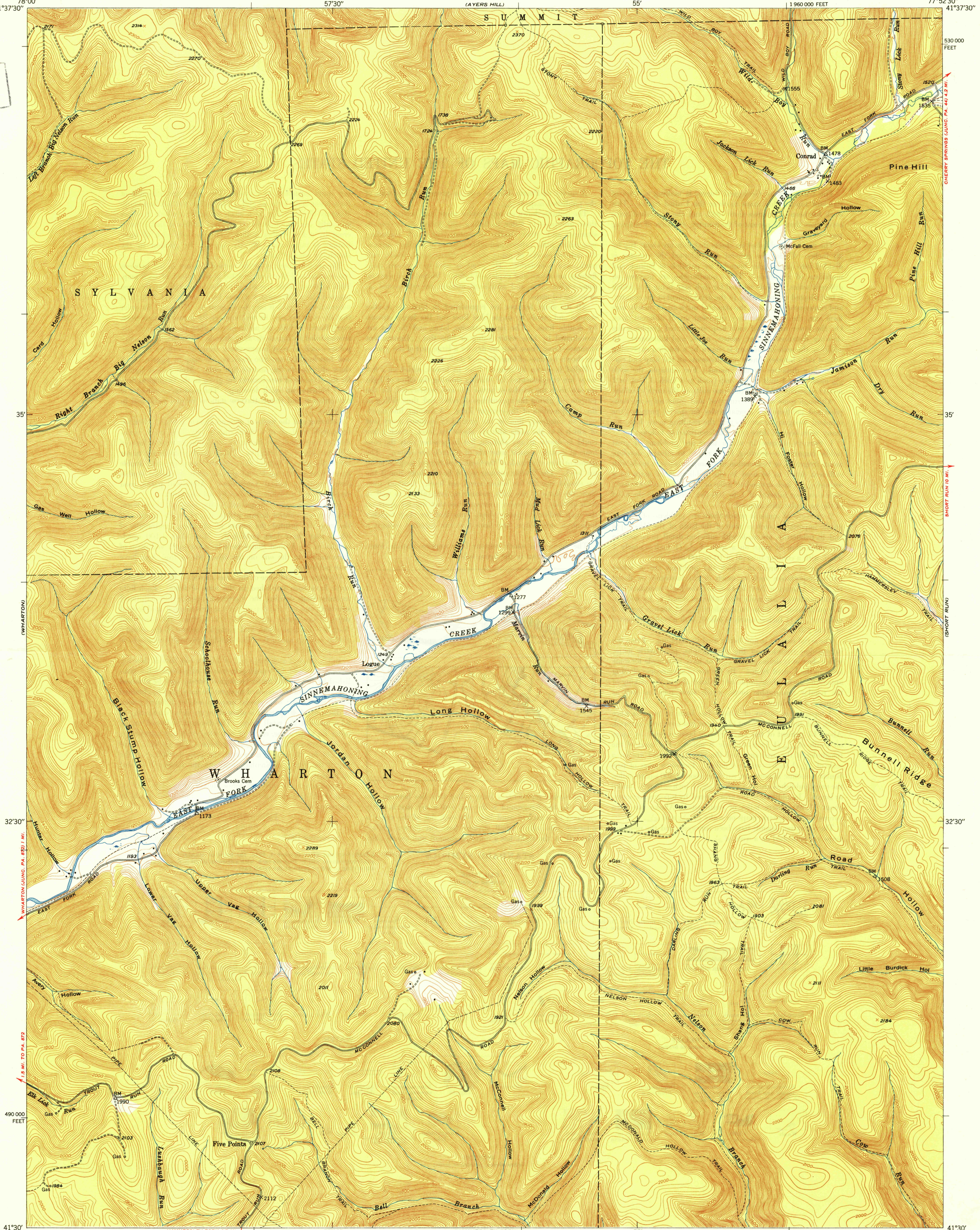
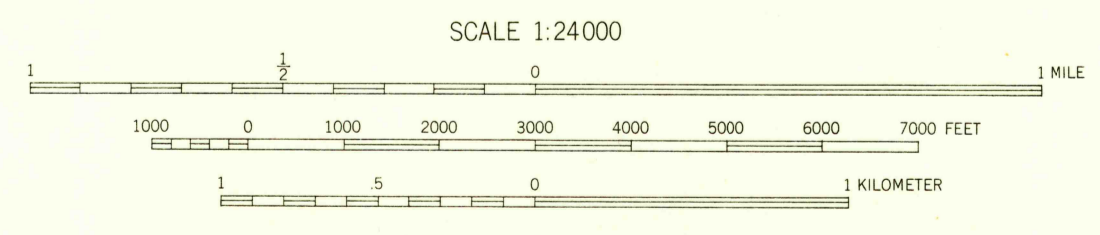
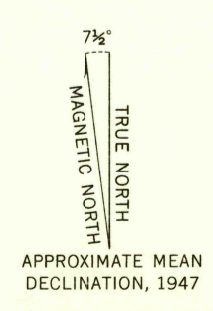


U.S.G.S.
FILE COPY
Inspection and Editing.



Maped, edited, and published by the Geological Survey
Control by USGS and USC&GS
Topography from aerial photographs by multiplex methods
Aerial photographs taken 1945. Field check 1947
Polyconic projection. 1927 North American datum
10,000-foot grid based on Pennsylvania coordinate system,
north zone



CONTOUR INTERVAL 20 FEET
DATUM IS MEAN SEA LEVEL

THIS MAP COMPLIES WITH NATIONAL MAP ACCURACY STANDARDS
FOR SALE BY U. S. GEOLOGICAL SURVEY, WASHINGTON 25, D. C.

ROAD CLASSIFICATION

HARD-SURFACE ALL WEATHER ROADS	DRY WEATHER ROADS
Heavy-duty — 4 LANE 16 LANE	Improved dirt — — — — —
Medium-duty — 4 LANE 16 LANE	Unimproved dirt — — — — —
Loose-surface, graded, or narrow hard-surface — — — — —	
U. S. Route	State Route

U.S.G.S.
FILE COPY
Inspection and Editing.

CONRAD, PA.
N4130-W7752.5/7.5
EDITION OF 1950