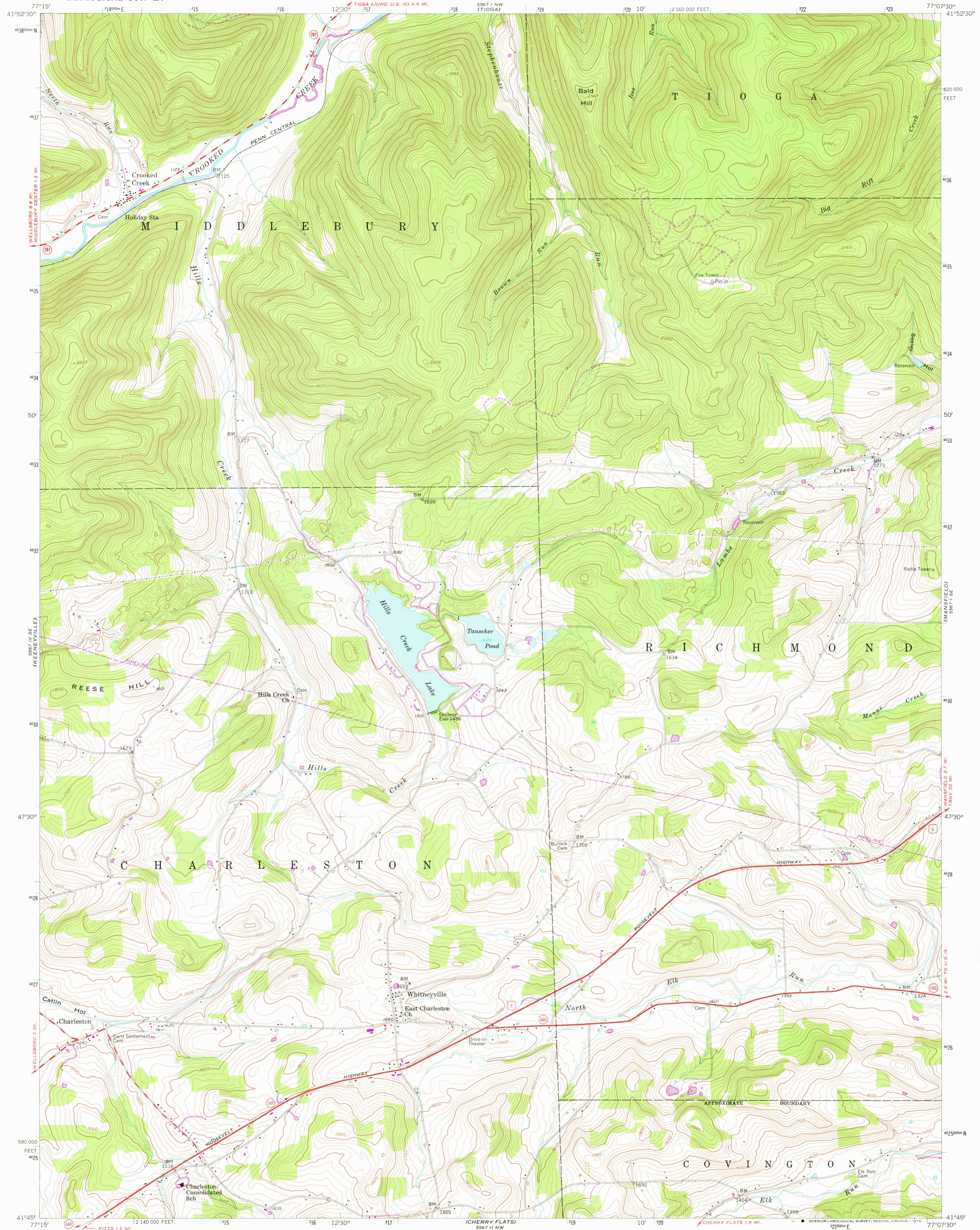


587 1/2 IN (ENGLAND)

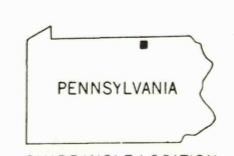
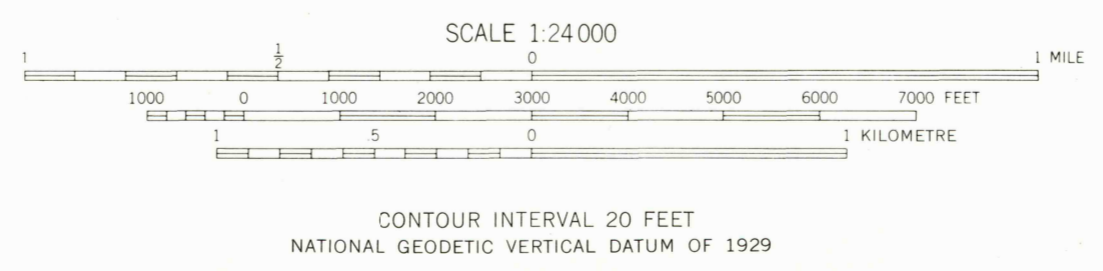
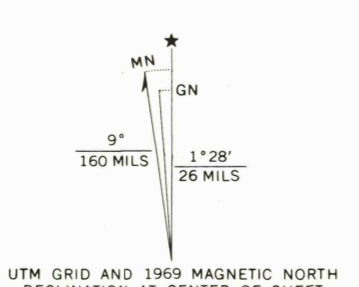
UNITED STATES DEPARTMENT OF THE INTERIOR GEOLOGICAL SURVEY

CROOKED CREEK QUADRANGLE PENNSYLVANIA—TIOGA CO. 7.5 MINUTE SERIES (TOPOGRAPHIC)

587 1/2 IN (ENGLAND) JACKSON SUMMIT



Mapped, edited, and published by the Geological Survey Control by USGS and USC&GS Topography from aerial photographs by Kelsch plotter Aerial photographs taken 1952. Field check 1954 Polyconic projection. 1927 North American datum 10,000-foot grid based on Pennsylvania coordinate system, north zone Unchecked elevations are shown in brown 1000-metre Universal Transverse Mercator grid ticks, zone 18, shown in blue Revisions shown in purple compiled in cooperation with State of Pennsylvania agencies, from aerial photographs taken 1969 This information not field checked



ROAD CLASSIFICATION table with symbols for Heavy-duty, Medium-duty, Light-duty, and Unimproved dirt roads, as well as U.S. and State Routes.

CROOKED CREEK, PA. NOV 10 1976 N4145-W7707.5/7.5

USGS Historical File Topographic Division

1954 PHOTOREVISED 1969 AMS 5567 I SW—SERIES V831