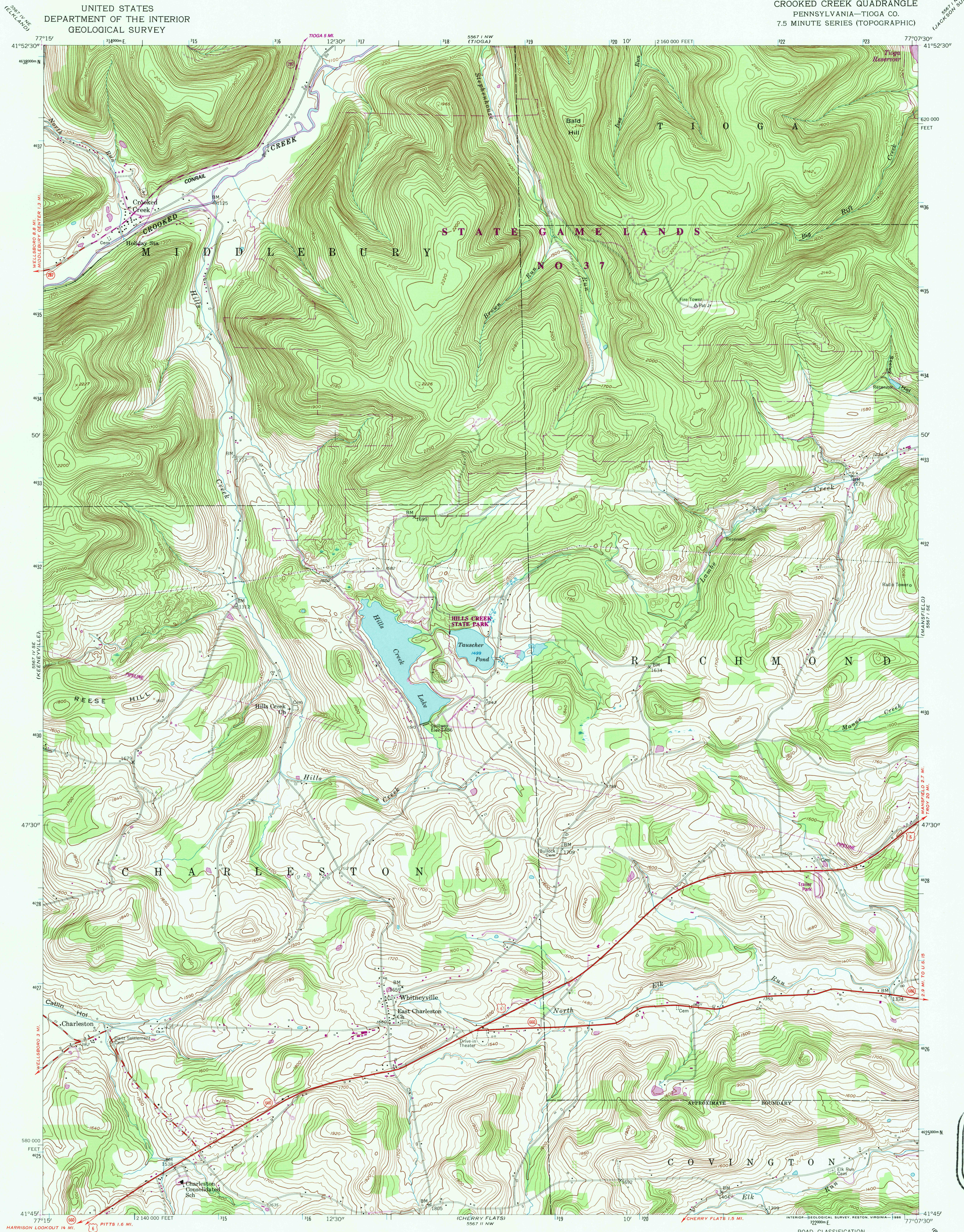
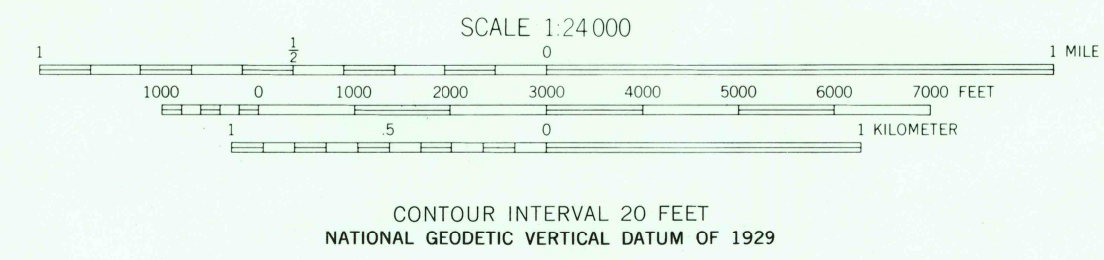
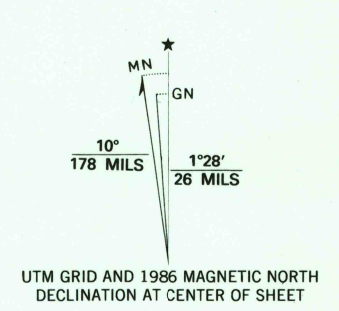


566' N.E.
JACKSON SUMMIT



Mapped, edited, and published by the Geological Survey
Control by USGS and USC&GS
Topography from aerial photographs by Kesh plotter
Aerial photographs taken 1952. Field check 1954
Polyconic projection. 1927 North American datum
10,000-foot grid based on Pennsylvania coordinate system,
north zone
Unchecked elevations are shown in brown
To place on the predicted North American Datum 1983,
move the projection lines 4 meters south and
26 meters west as shown by dashed corner ticks
There may be private inholdings within the boundaries of
the National or State reservations shown on this map
1000-meter Universal Transverse Mercator grid ticks,
zone 18, shown in blue



ROAD CLASSIFICATION

Primary highway, hard surface	Light-duty road, hard or improved surface
Secondary highway, hard surface	Unimproved road
Interstate Route	U. S. Route
	State Route

THIS MAP COMPLIES WITH NATIONAL MAP ACCURACY STANDARDS
FOR SALE BY U. S. GEOLOGICAL SURVEY, RESTON, VIRGINIA 22092
A FOLDER DESCRIBING TOPOGRAPHIC MAPS AND SYMBOLS IS AVAILABLE ON REQUEST

Revisions shown in purple compiled in cooperation with
Commonwealth of Pennsylvania agencies from aerial photographs
taken 1983 and other sources. This information not
field checked. Map edited 1986

CROOKED CREEK, PA.
41077-G2-TF-024
1954
PHOTOREVISED 1986
DMA 5567 1 SW-SERIES V831

