

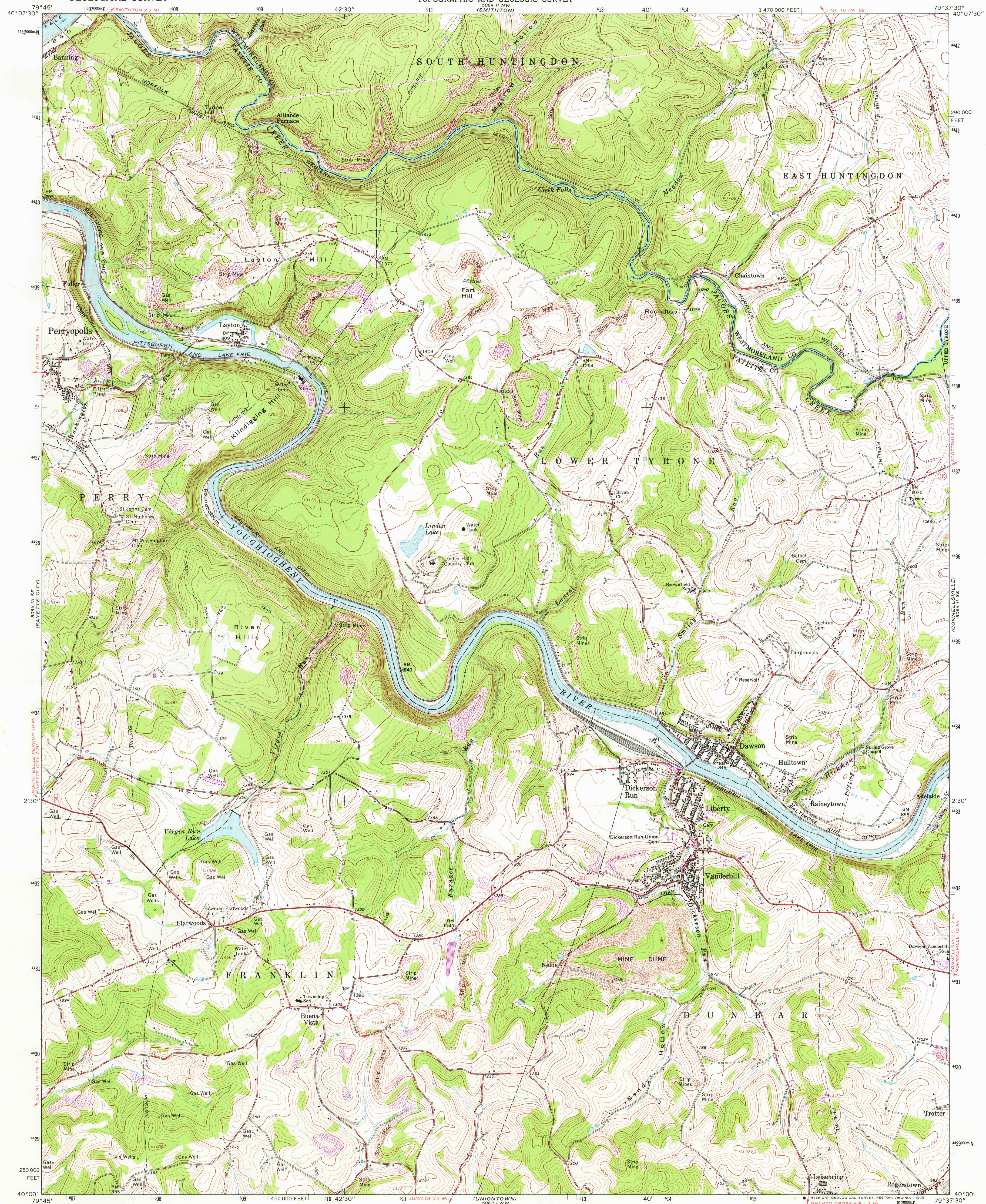
See U.S. GEOLOGICAL SURVEY MAPS FOR COORDINATE INFORMATION

See U.S. GEOLOGICAL SURVEY MAPS FOR COORDINATE INFORMATION

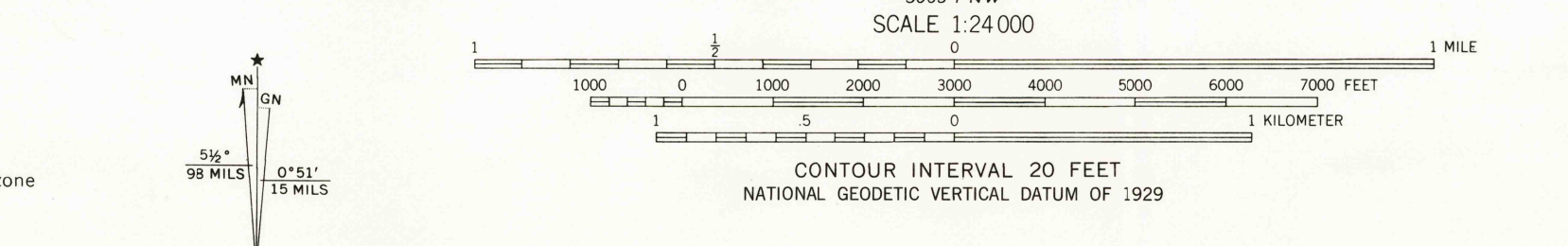
UNITED STATES DEPARTMENT OF THE INTERIOR GEOLOGICAL SURVEY

COMMONWEALTH OF PENNSYLVANIA DEPARTMENT OF ENVIRONMENTAL RESOURCES TOPOGRAPHIC AND GEOLOGIC SURVEY

DAWSON QUADRANGLE PENNSYLVANIA 7.5 MINUTE SERIES (TOPOGRAPHIC)



Mapped, edited, and published by the Geological Survey Control by USGS and USC&GS Topography by photogrammetric methods from aerial photographs taken 1962. Field checked 1964 Polyconic projection. 1927 North American datum 10,000-foot grid based on Pennsylvania coordinate system, south zone 1000-meter Universal Transverse Mercator grid ticks, zone 17, shown in blue Fine red dashed lines indicate selected fence and field lines where generally visible on aerial photographs. This information is unchecked Revisions shown in purple compiled in cooperation with State of Pennsylvania agencies from aerial photographs taken 1973. This information not field checked Map photoinspeted 1977 No major culture or drainage changes observed



ROAD CLASSIFICATION: Heavy-duty, Light-duty, Medium-duty, Unimproved dirt, State Route. USGS Historical File Topographic Division. DAWSON, PA. APR 14 1978. N4000-W7937.5/7.5 PHOTOSPECTED 1977 1964 PHOTOREVISED 1973 AMS 5064 II SW-SERIES V831

5300