

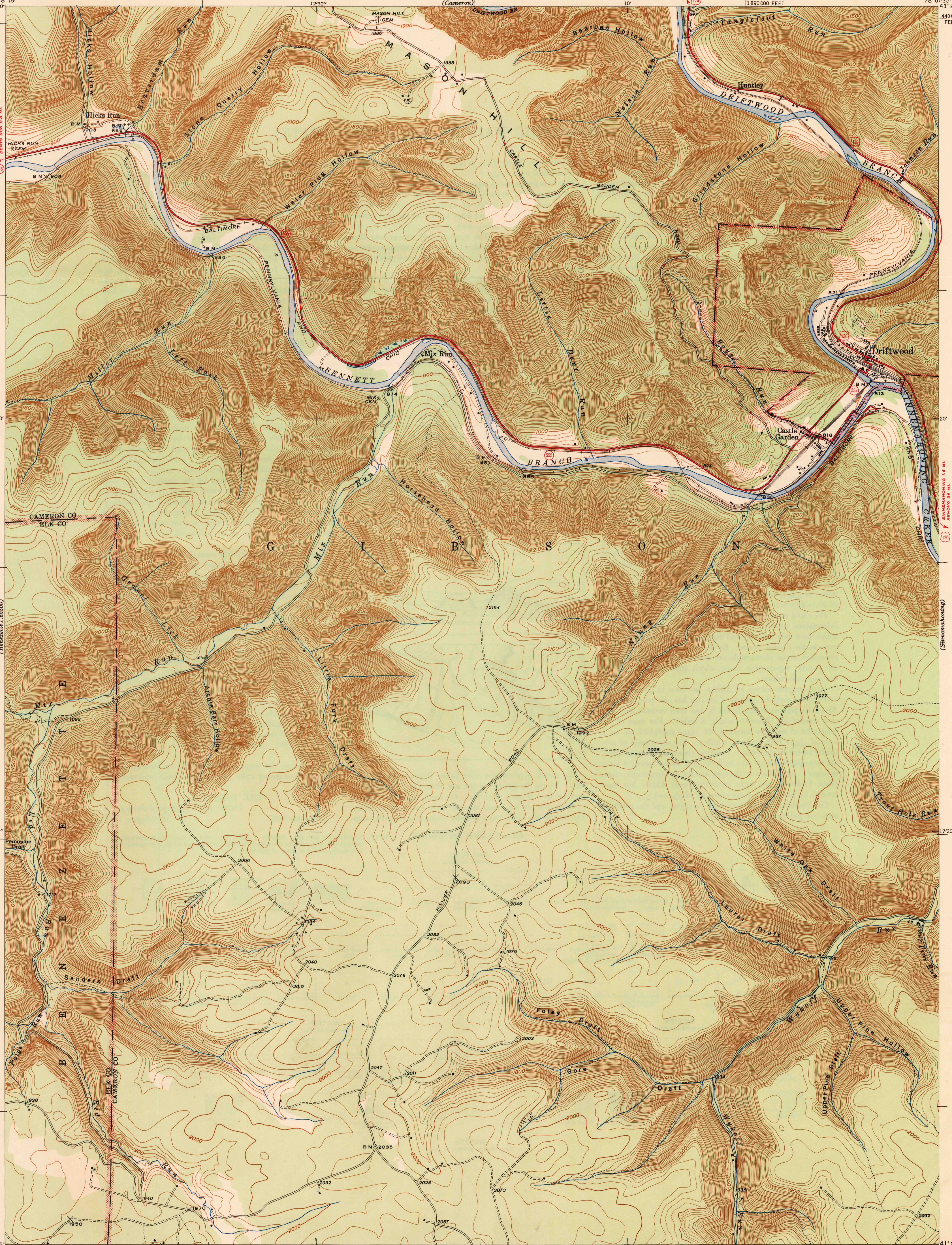
(Benezette)
1:62,500

UNITED STATES
DEPARTMENT OF THE INTERIOR
GEOLOGICAL SURVEY

U. S. G. S.
FILE COPY
Inspection and Editing

STATE OF PENNSYLVANIA
DEPARTMENT OF INTERNAL AFFAIRS
WILLIAM S. LIVENGOD, JR., SECRETARY
TOPOGRAPHIC AND GEOLOGIC SURVEY
STANLEY HOLMAN CATHCART, STATE GEOLOGIST
(Cameron)

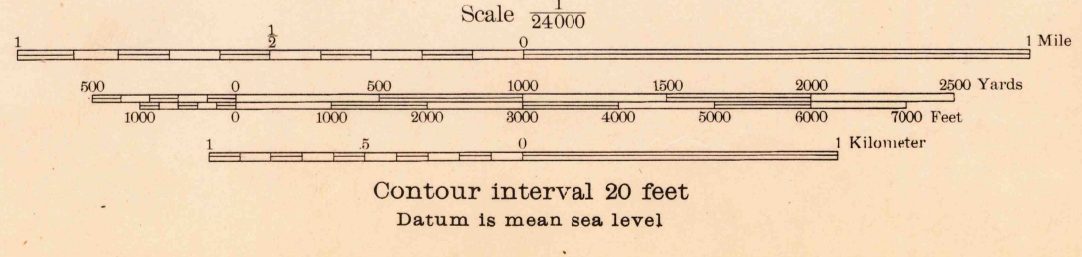
PENNSYLVANIA
DRIFTWOOD QUADRANGLE
7 1/2-MINUTE SERIES



Mapped by the Geological Survey
1945

ROAD CLASSIFICATION
1947
Dependable hard surface
Heavy-duty road
Secondary hard surface
All-weather road
More than two lanes indicated along road with tick at point of change

TRUE NORTH
MAGNETIC NORTH
APPROXIMATE MEAN
DECLINATION, 1945



USGS
Historical File
Topographic Division
U. S. G. S.
FILE COPY
Inspection and Editing

Polyconic projection, 1927 North American datum
10000 foot grid based on Pennsylvania (North)
rectangular coordinate system

DRIFTWOOD, PA.
Edition of 1947

N4115-W7807.5/7.5

(Karthaus)
1:62,500

SEP 28 1947

4275