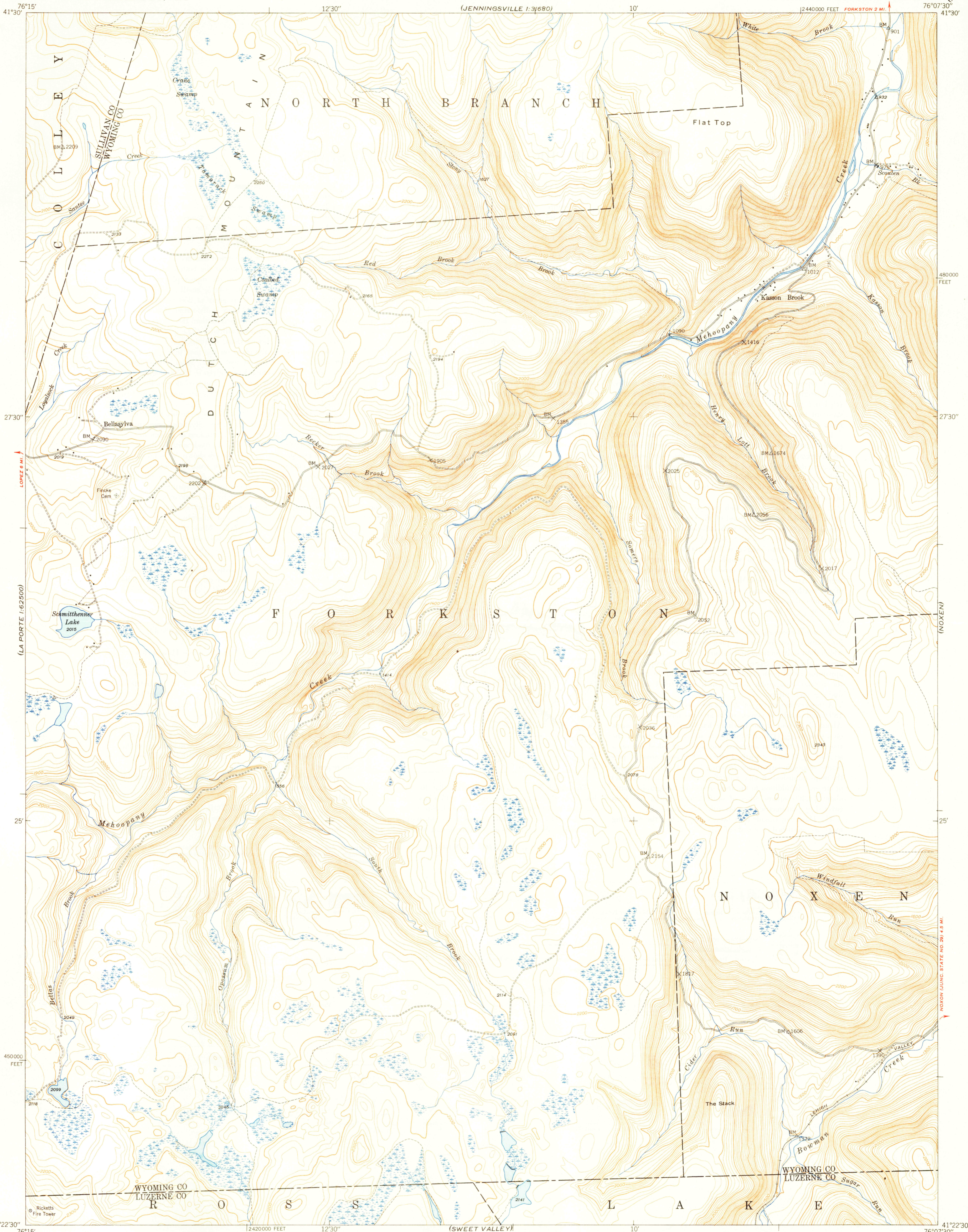
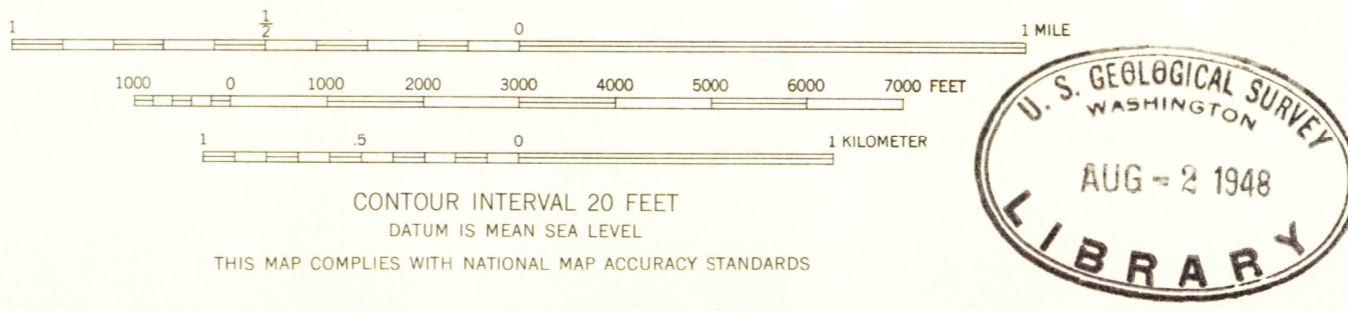


(MESHOPPEN)
1:31650



Mapped, edited, and published by the Geological Survey
Control by USGS and US&GS
Topography from aerial photographs by multiplex methods
Aerial photographs taken 1942. Field check, 1946
Polyconic projection. 1927 North American datum
10,000-foot grid based on Pennsylvania coordinate system,
North zone

APPROXIMATE MEAN
DECLINATION, 1946



ROAD CLASSIFICATION
 HARD-SURFACE ALL WEATHER ROADS DRY WEATHER ROADS
 Heavy-duty 2 LANE 2 LANE Improved dirt
 Medium-duty 2 LANE 2 LANE Unimproved dirt
 Loose-surface or narrow hard-surface
 U. S. Route State Route

THIS MAP COMPLIES WITH NATIONAL MAP ACCURACY STANDARDS
FOR SALE BY U. S. GEOLOGICAL SURVEY, WASHINGTON 25, D. C.

DUTCH MTN., PA.
N4122.5-W7607.5/7.5
PRINTED 1948