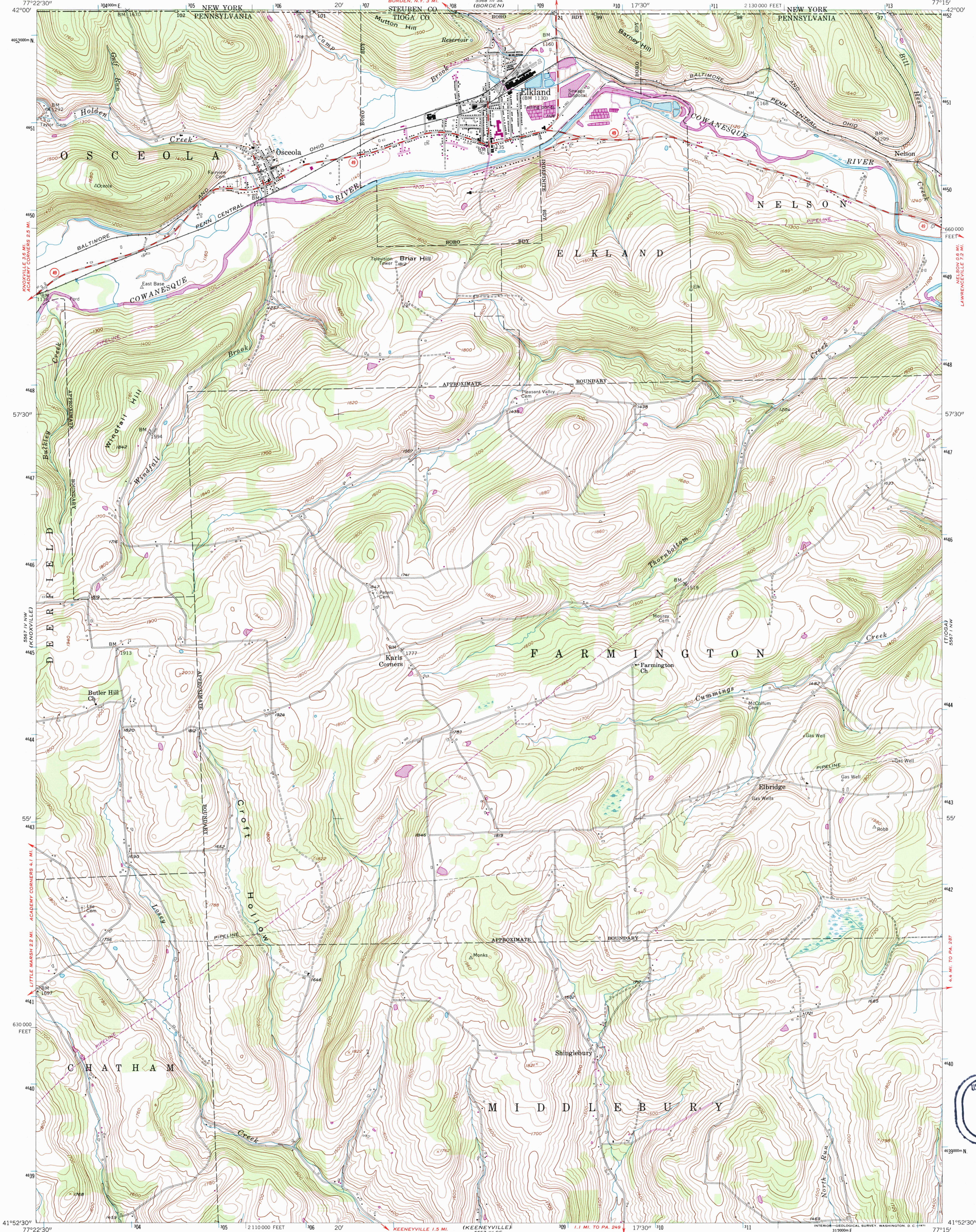


589 11 34  
WOODHULL

UNITED STATES  
DEPARTMENT OF THE INTERIOR  
GEOLOGICAL SURVEY

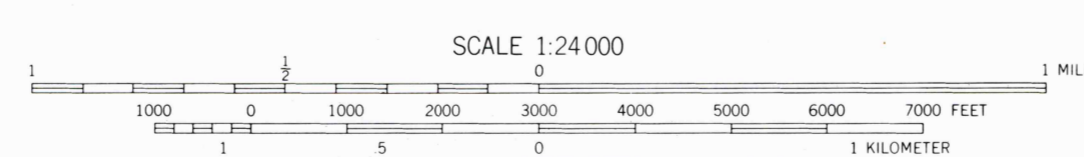
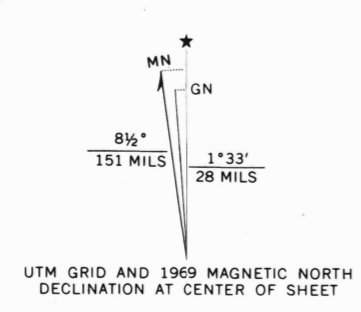
ELKLAND QUADRANGLE  
PENNSYLVANIA—NEW YORK  
7.5 MINUTE SERIES (TOPOGRAPHIC)  
NE 1/4 ELKLAND 15' QUADRANGLE

588 11 34  
LADDISON

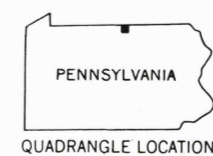


USGS AND HISTORICAL  
MAP ARCHIVES  
JUL 16 1996  
REC'D FILE COPY

Mapped, edited, and published by the Geological Survey  
Control by USGS and USCGS  
Topography from aerial photographs by stereophotogrammetric  
methods. Aerial photographs taken 1952. Field check 1954  
Polyconic projection. 1927 North American datum  
10,000-foot grid based on Pennsylvania coordinate system,  
north zone  
Unchecked elevations are shown in brown  
1000-meter Universal Transverse Mercator grid ticks,  
zone 18, shown in blue  
Revisions shown in purple compiled in cooperation with  
State of Pennsylvania agencies from aerial photographs  
taken 1969. This information not field checked



CONTOUR INTERVAL 20 FEET  
DATUM IS MEAN SEA LEVEL



ROAD CLASSIFICATION

Heavy-duty	Light-duty
Medium-duty	Unimproved dirt
U.S. Route	State Route

ELKLAND, PA.—N.Y.  
NE 1/4 ELKLAND 15' QUADRANGLE  
N4152.5—W7715.75  
1954  
PHOTOREVISED 1969  
AMS 5567 IV NE—SERIES V831

THIS MAP COMPLIES WITH NATIONAL MAP ACCURACY STANDARDS  
FOR SALE BY U.S. GEOLOGICAL SURVEY, WASHINGTON, D.C. 20242  
A FOLDER DESCRIBING TOPOGRAPHIC MAPS AND SYMBOLS IS AVAILABLE ON REQUEST

9 780607 46 1824