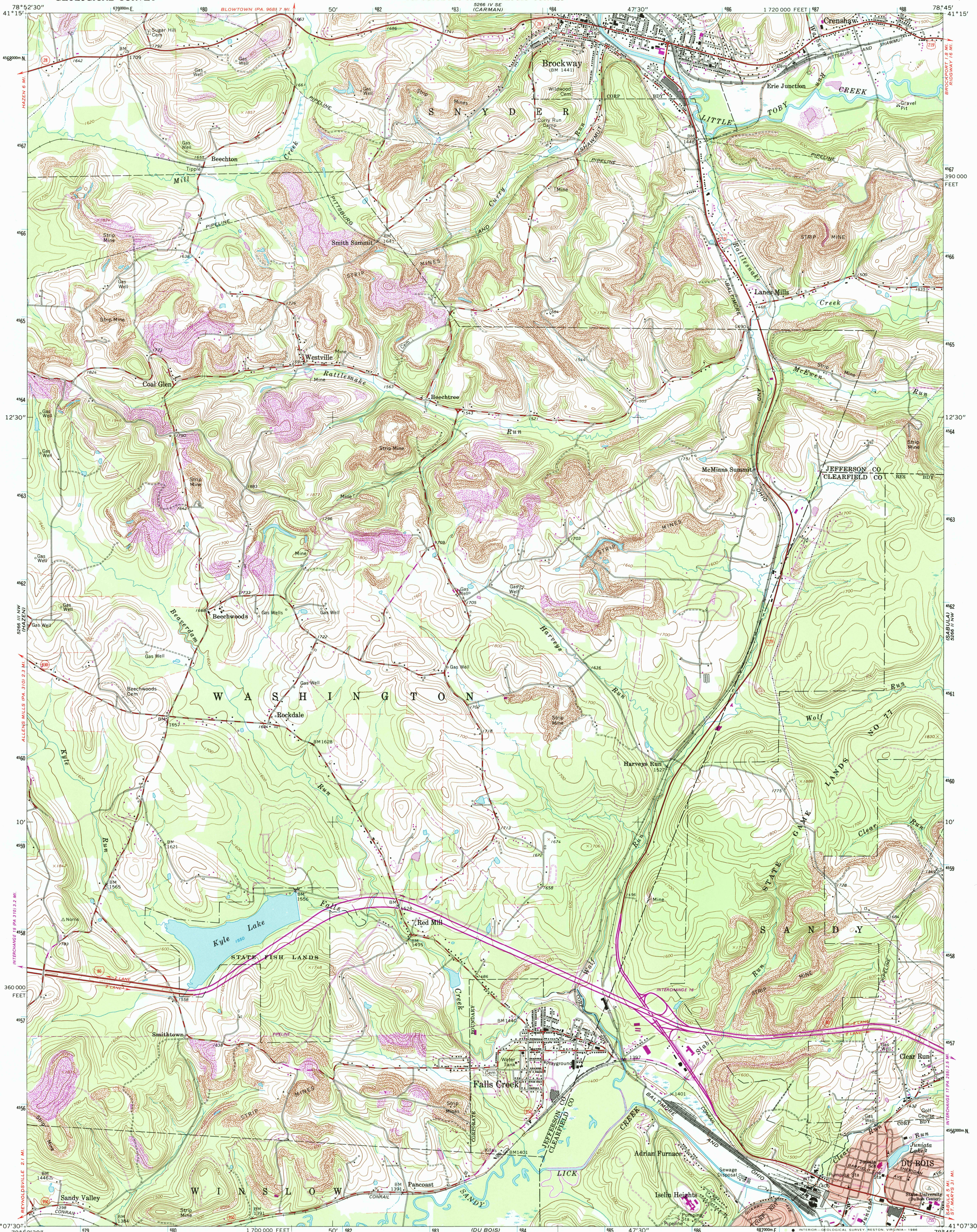
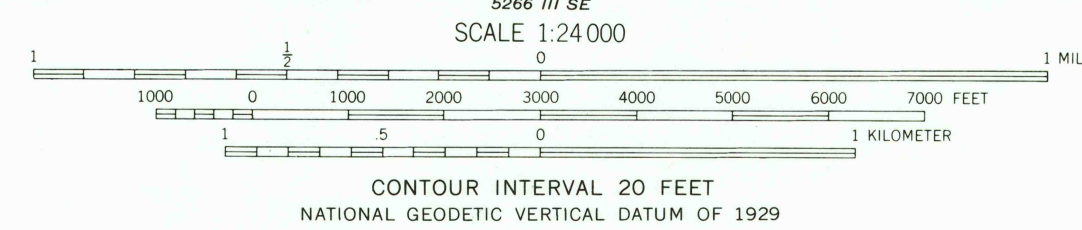


2500 14 SW
2500 14 SW
(BRANDY CAMP)



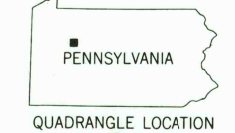
Mapped, edited, and published by the Geological Survey

Control by USGS and NOS/NOAA
Topography by photogrammetric methods from aerial photographs taken 1964. Field checked 1966
Polyconic projection. 10,000-foot grid ticks based on Pennsylvania coordinate system, north zone
1000-meter Universal Transverse Mercator grid ticks zone 17, shown in blue. 1927 North American Datum
To place on the predicted North American Datum 1983 move the projection lines 3 meters south and 21 meters west as shown by dashed corner ticks
Fine red dashed lines indicate selected fence and field lines where generally visible on aerial photographs. This information is unchecked
Red tint indicates areas in which only landmark buildings are shown
There may be private inholdings within the boundaries of the National or State reservations shown on this map



ROAD CLASSIFICATION

Heavy-duty	Light-duty
Medium-duty	Unimproved dirt
Interstate Route	U.S. Route
	State Route



THIS MAP COMPLIES WITH NATIONAL MAP ACCURACY STANDARDS
FOR SALE BY U.S. GEOLOGICAL SURVEY, DENVER, COLORADO 80225, OR RESTON, VIRGINIA 22092
A FOLDER DESCRIBING TOPOGRAPHIC MAPS AND SYMBOLS IS AVAILABLE ON REQUEST

Revisions shown in purple compiled in cooperation with Commonwealth of Pennsylvania agencies from aerial photographs taken 1983 and other sources. This information not field checked. Map edited 1986

FALLS CREEK, PA.
41078-B7-TF-024
1986
PHOTOREVISED 1986
DMA 5266 III NE-SERIES V831

