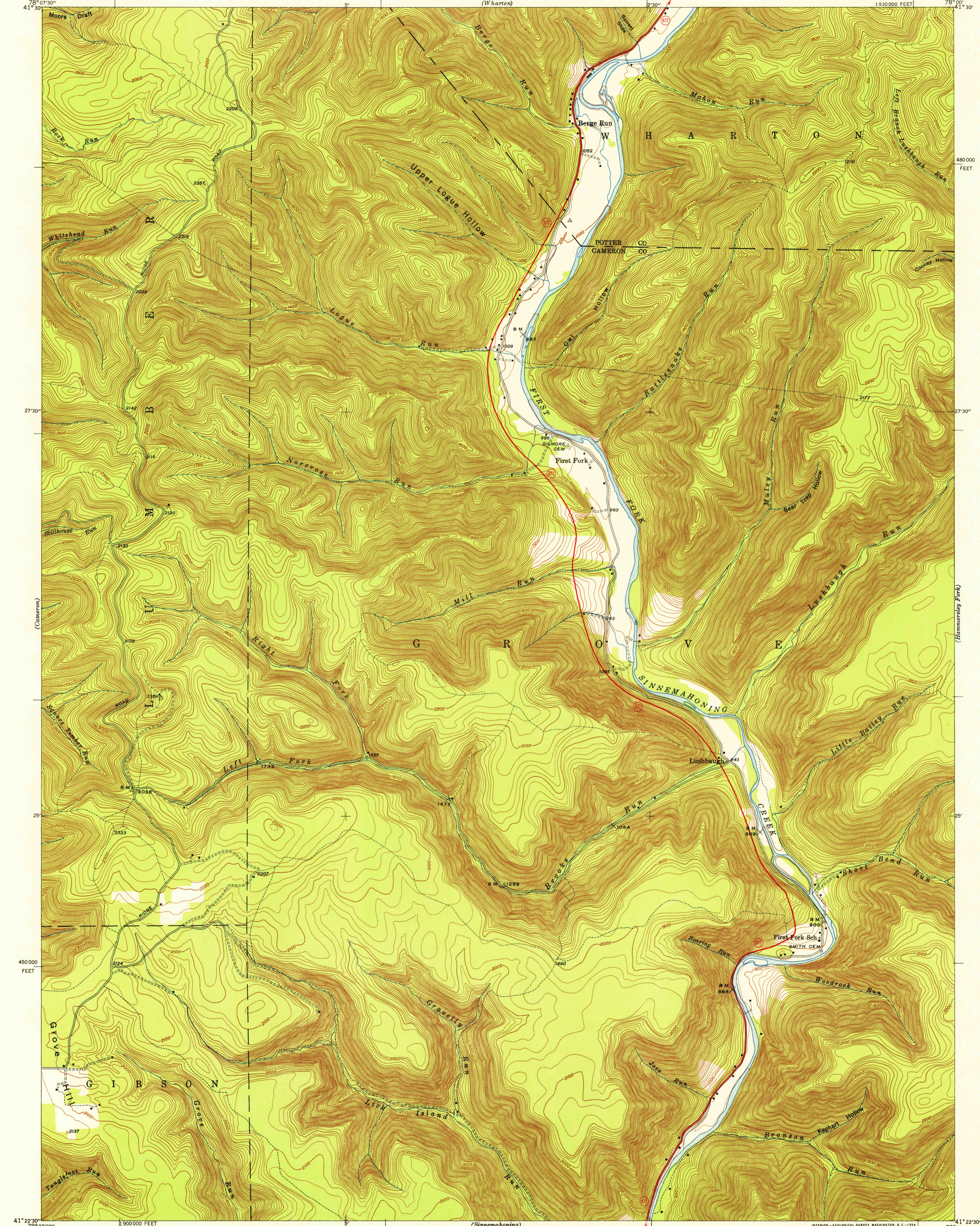


U.S.G.S.
FILE COPY
TOPOGRAPHIC DIVISION



Mapped by the Geological Survey
1945

ROAD CLASSIFICATION

Heavy-duty ——— 4 LANE 6 LANE Light-duty ———
Medium-duty ——— 4 LANE 6 LANE Unimproved dirt ———

□ U. S. Route ○ State Route

TRUE NORTH
MAGNETIC NORTH
APPROXIMATE MEAN
DECLINATION, 1948

(Sinnemaoning)
SCALE 1:24,000

4.7 MI. TO U.S. 120
RENOVO 30 MI.

1 MILE
1 KILOMETER

Contour interval 20 feet
Datum is mean sea level

INTERIOR—GEOLOGICAL SURVEY, WASHINGTON, D. C.—1954
Polyconic projection. 1927 North American datum
10,000 foot grid based on Pennsylvania (North)
rectangular coordinate system

USGS
Historical File
Topographic Division

FIRST FORK, PA.

U.S.G.S.
FILE COPY
TOPOGRAPHIC DIVISION

FOR SALE BY U. S. GEOLOGICAL SURVEY, WASHINGTON 25, D. C.
A FOLDER DESCRIBING TOPOGRAPHIC MAPS AND SYMBOLS IS AVAILABLE ON REQUEST

N 4122.5—W 7800/7.5
1945

JAN 26 1955
4195