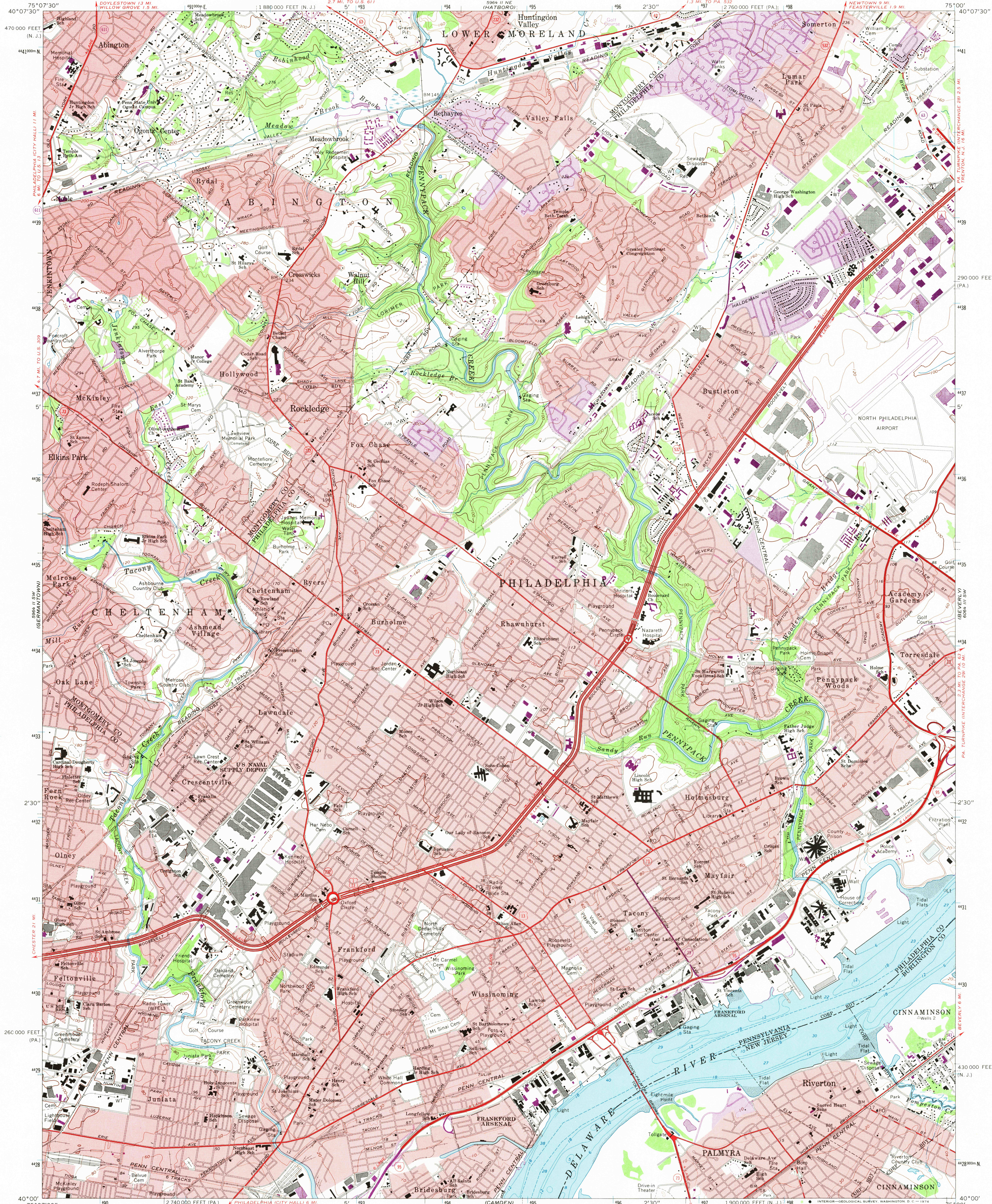
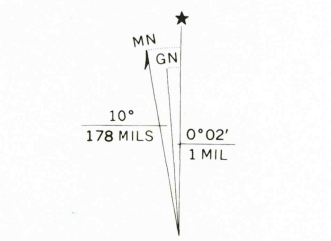


UNITED STATES  
DEPARTMENT OF THE INTERIOR  
GEOLOGICAL SURVEY

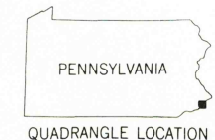
FRANKFORD QUADRANGLE  
PENNSYLVANIA-NEW JERSEY  
7.5 MINUTE SERIES (TOPOGRAPHIC)



Mapped by the U.S. Coast & Geodetic Survey  
Edited and published by the Geological Survey  
Control by USGS, USC&GS, USCE, and  
New Jersey Geodetic Control Survey  
Planimetry by photogrammetric methods from aerial photographs  
taken 1946 and 1950. Topography by planetable surveys 1947  
Revised by the Geological Survey from aerial photographs taken 1965  
Field checked 1967  
Selected hydrographic data compiled from USC&GS Chart 296 (1966)  
This information is not intended for navigational purposes  
Polyconic projection. 1927 North American datum  
10,000-foot grids based on Pennsylvania coordinate system,  
south zone, and New Jersey coordinate system  
1000-meter Universal Transverse Mercator grid ticks,  
zone 18, shown in blue  
Red tint indicates areas in which only landmark buildings are shown



SCALE 1:24,000  
CONTOUR INTERVAL 20 FEET  
DOTTED LINES REPRESENT 10-FOOT CONTOURS  
DATUM IS MEAN SEA LEVEL  
DEPTH CURVES AND SOUNDINGS IN FEET—DATUM IS MEAN LOW WATER  
SHORELINE SHOWN REPRESENTS THE APPROXIMATE LINE OF MEAN HIGH WATER  
THE MEAN RANGE OF TIDE IS APPROXIMATELY 6 FEET  
THIS MAP COMPLIES WITH NATIONAL MAP ACCURACY STANDARDS  
FOR SALE BY U.S. GEOLOGICAL SURVEY, WASHINGTON, D.C. 20242  
A FOLDER DESCRIBING TOPOGRAPHIC MAPS AND SYMBOLS IS AVAILABLE ON REQUEST



ROAD CLASSIFICATION  
Heavy-duty ——— Light-duty ———  
Medium-duty ——— Unimproved dirt ———  
Interstate Route U.S. Route State Route

PHOTOGRAPHIC FILE  
TOPOGRAPHIC DIVISION  
FRANKFORD, PA. - N. J.  
N4000-W7500/7.5  
1967  
PHOTOREVISED 1973  
AMS 5964 II SE-SERIES V831

JAN 23 1974