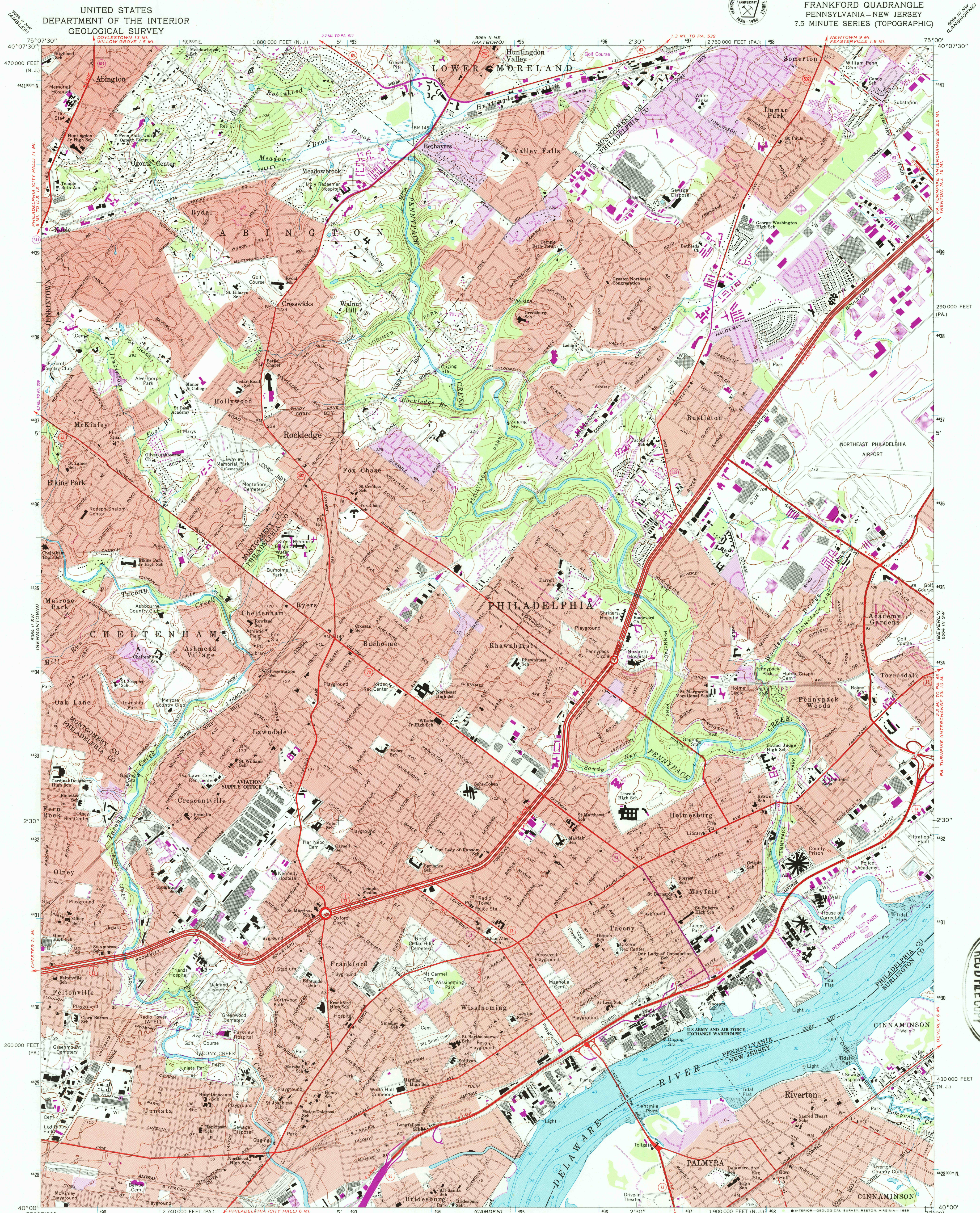


UNITED STATES
DEPARTMENT OF THE INTERIOR
GEOLOGICAL SURVEY

FRANKFORD QUADRANGLE
PENNSYLVANIA-NEW JERSEY
7.5 MINUTE SERIES (TOPOGRAPHIC)



5964 I NW
(LANGHORNE)



USGS NAD HISTORICAL MAP
OCT 10 1996
REC'D FILE COPY

Mapped by the U. S. Coast & Geodetic Survey
Edited and published by the Geological Survey
Control by USGS, NGS, NOAA, USCE, and
New Jersey Geodetic Control Survey
Planimetry by photogrammetric methods from aerial photographs
taken 1946 and 1950. Topography by planimetric surveys 1947
Revised by the Geological Survey from aerial photographs taken 1965
Field checked 1967
Selected hydrographic data compiled from NOS chart 296 (1966)
This information is not intended for navigational purposes
Polyconic projection. 10,000-foot grid ticks based on Pennsylvania
coordinate system, south zone, and New Jersey coordinate system
1000-meter Universal Transverse Mercator grid ticks,
zone 18, shown in blue. 1927 North American Datum
To place on the predicted North American Datum 1983
move the projection lines 6 meters south and 32 meters
west as shown by dashed corner ticks
Red tint indicates areas in which only landmark buildings are shown
There may be private inholdings within the boundaries of
the National or State reservations shown on this map

UTM GRID AND 1983 MAGNETIC NORTH
DECLINATION AT CENTER OF SHEET
Revisions shown in purple and woodland compiled from
aerial photographs taken 1981 and other sources
This information not field checked. Map edited 1983
Purple tint indicates extension of urban areas

SCALE 1:24,000
CONTOUR INTERVAL 20 FEET
DOTTED LINES REPRESENT 10-FOOT CONTOURS
NATIONAL GEODETIC VERTICAL DATUM OF 1929
DEPTH CURVES AND SOUNDINGS IN FEET-DATUM IS MEAN LOW WATER
THE RELATIONSHIP BETWEEN THE TWO DATUMS IS VARIABLE
SHORELINE SHOWN REPRESENTS THE APPROXIMATE LINE OF MEAN HIGH WATER
THE MEAN RANGE OF TIDE IS APPROXIMATELY 6 FEET
THIS MAP COMPLIES WITH NATIONAL MAP ACCURACY STANDARDS
FOR SALE BY U. S. GEOLOGICAL SURVEY, RESTON, VIRGINIA 22092
A FOLDER DESCRIBING TOPOGRAPHIC MAPS AND SYMBOLS IS AVAILABLE ON REQUEST

ROAD CLASSIFICATION
Heavy-duty ——— Light-duty ———
Medium-duty ——— Unimproved dirt ———
Interstate Route U. S. Route State Route
FRANKFORD, PA. - N. J.
40075-A1-TF-024
1967
PHOTOREVISED 1983
DMA 5964 I SE - SERIES V831