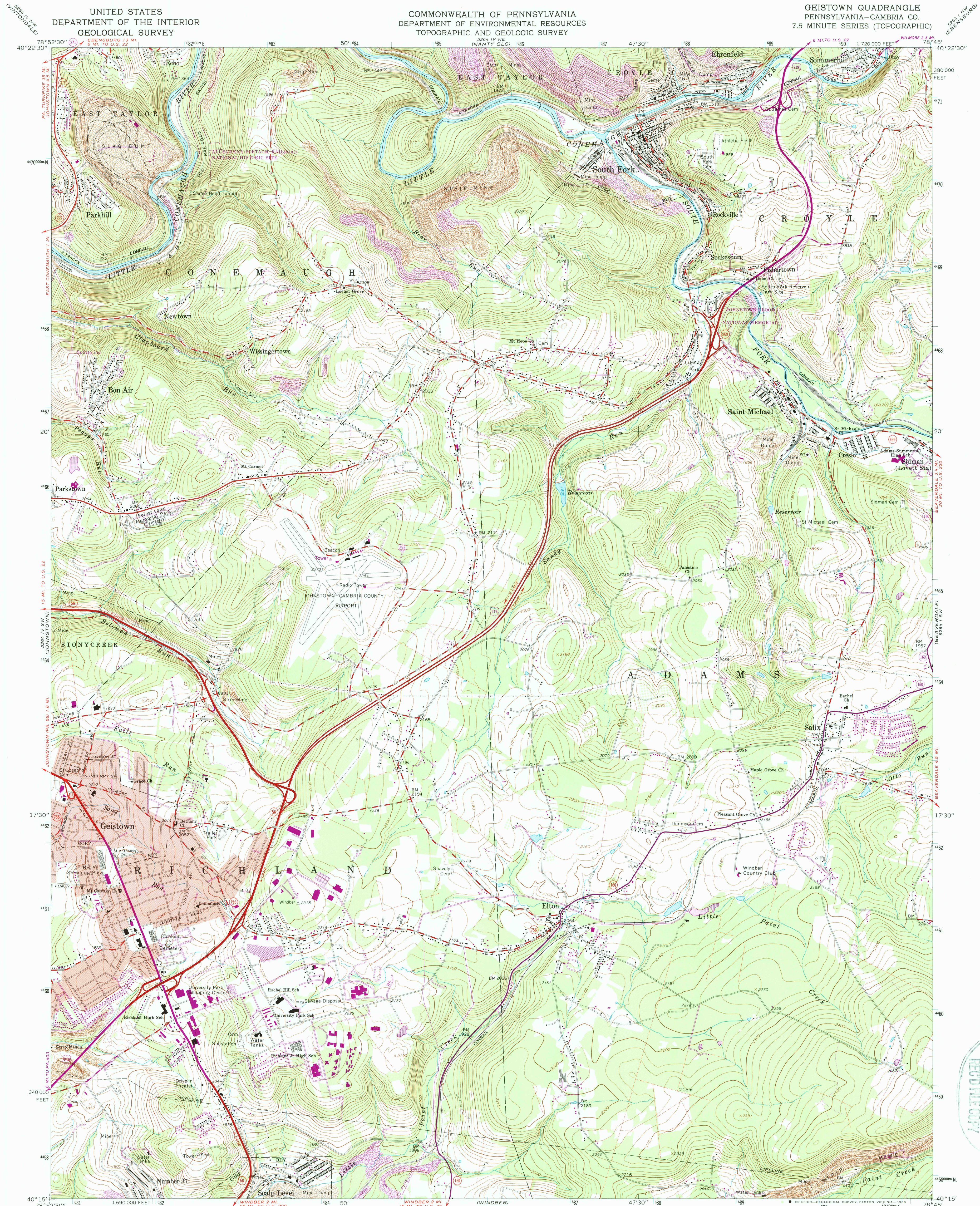


UNITED STATES
DEPARTMENT OF THE INTERIOR
GEOLOGICAL SURVEY

COMMONWEALTH OF PENNSYLVANIA
DEPARTMENT OF ENVIRONMENTAL RESOURCES
TOPOGRAPHIC AND GEOLOGIC SURVEY

GEISTOWN QUADRANGLE
PENNSYLVANIA—CAMBRIA CO.
7.5 MINUTE SERIES (TOPOGRAPHIC)



REPRODUCTION
JAN 23 1988
U.S. GEOLOGICAL SURVEY

Mapped, edited, and published by the Geological Survey

Control by USGS, NOS/NOAA, and, USCE

Topography by photogrammetric methods from aerial
photographs taken 1962. Field checked 1964

Polyconic projection. 10,000-foot grid ticks based on
Pennsylvania coordinate system, south zone

1000-meter Universal Transverse Mercator grid ticks,
zone 17, shown in blue. 1927 North American Datum

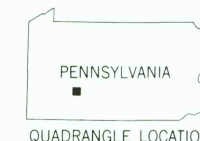
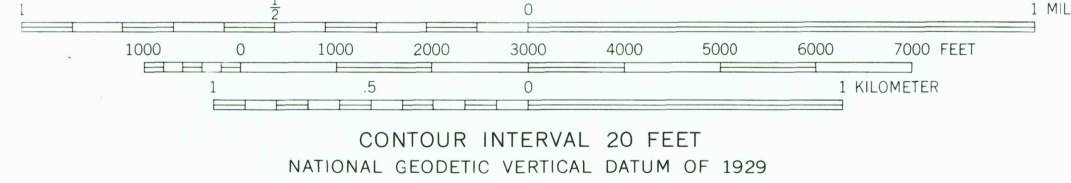
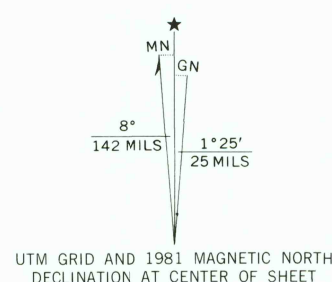
To place on the predicted North American Datum 1983
move the projection lines 5 meters south and

21 meters west as shown by dashed corner ticks

Fine red dashed lines indicate selected fence and field lines
generally visible on aerial photographs. This information is unchecked

Red tint indicates area in which only landmark buildings are shown

There may be private inholdings within the boundaries of
the National or State reservations shown on this map



ROAD CLASSIFICATION	
Heavy-duty	Light-duty
Medium-duty	Unimproved dirt
U. S. Route	State Route

GEISTOWN, PA.

40078-C7-TF-024

1964
PHOTO-REVISED 1981
DMA 5264 IV SE-SERIES V831

THIS MAP COMPLIES WITH NATIONAL MAP ACCURACY STANDARDS
FOR SALE BY U. S. GEOLOGICAL SURVEY, DENVER, COLORADO 80225, OR RESTON, VIRGINIA 22092
A FOLDER DESCRIBING TOPOGRAPHIC MAPS AND SYMBOLS IS AVAILABLE ON REQUEST

Revisions shown in purple compiled in cooperation with
Commonwealth of Pennsylvania agencies from aerial
photographs taken 1977 and other sources. This
information not field checked. Map edited 1981