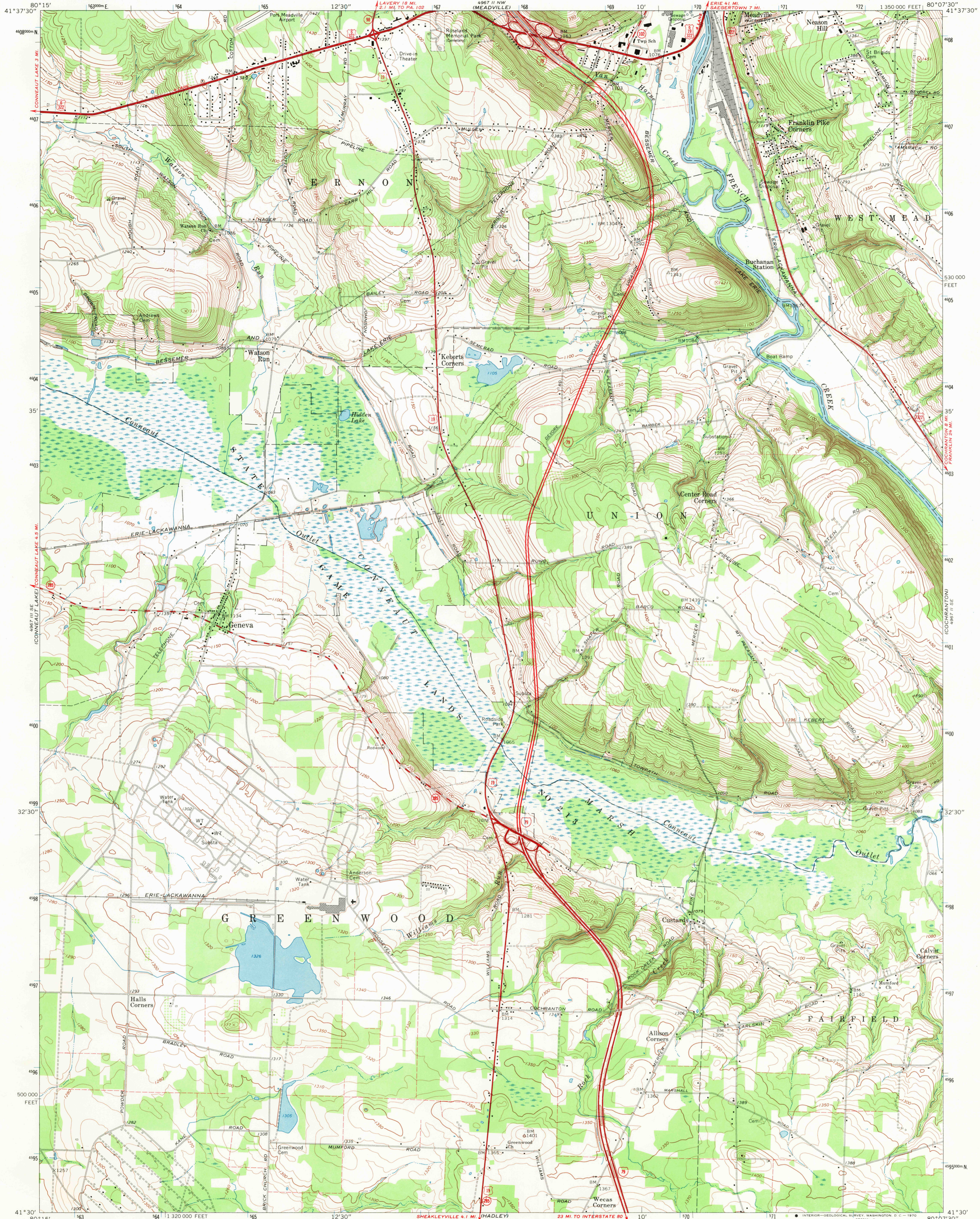
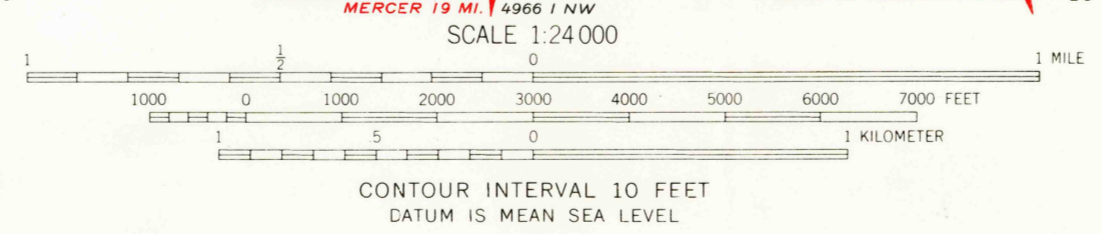
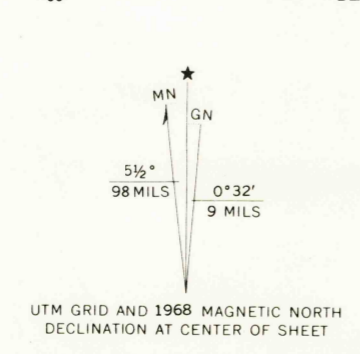


UNITED STATES
DEPARTMENT OF THE INTERIOR
GEOLOGICAL SURVEY

GENEVA QUADRANGLE
PENNSYLVANIA—CRAWFORD CO.
7.5 MINUTE SERIES (TOPOGRAPHIC)
SW/4 MEADVILLE 15' QUADRANGLE



Mapped, edited, and published by the Geological Survey
Control by USGS and USC&GS
Topography by photogrammetric methods from aerial
photographs taken 1964. Field checked 1968
Polyconic projection. 1927 North American datum
10,000-foot grid based on Pennsylvania coordinate system,
north zone
1000-meter Universal Transverse Mercator grid ticks,
zone 17, shown in blue
Fine red dashed lines indicate selected fence and field lines where
generally visible on aerial photographs. This information is unchecked



ROAD CLASSIFICATION

Primary highway, all weather, hard surface	Light-duty road, all weather, improved surface
Secondary highway, all weather, hard surface	Unimproved road, fair or dry weather

 Interstate Route
 U. S. Route
 State Route

U.S.G.S.
FILE COPY
TOPOGRAPHIC DIVISION

THIS MAP COMPLIES WITH NATIONAL MAP ACCURACY STANDARDS
FOR SALE BY U.S. GEOLOGICAL SURVEY, WASHINGTON, D. C. 20242
A FOLDER DESCRIBING TOPOGRAPHIC MAPS AND SYMBOLS IS AVAILABLE ON REQUEST

GENEVA, PA.
SW/4 MEADVILLE 15' QUADRANGLE
N4130—W8007.5/7.5

1968
AMS 4967 II SW—SERIES V831

3110
JUN 19 1970