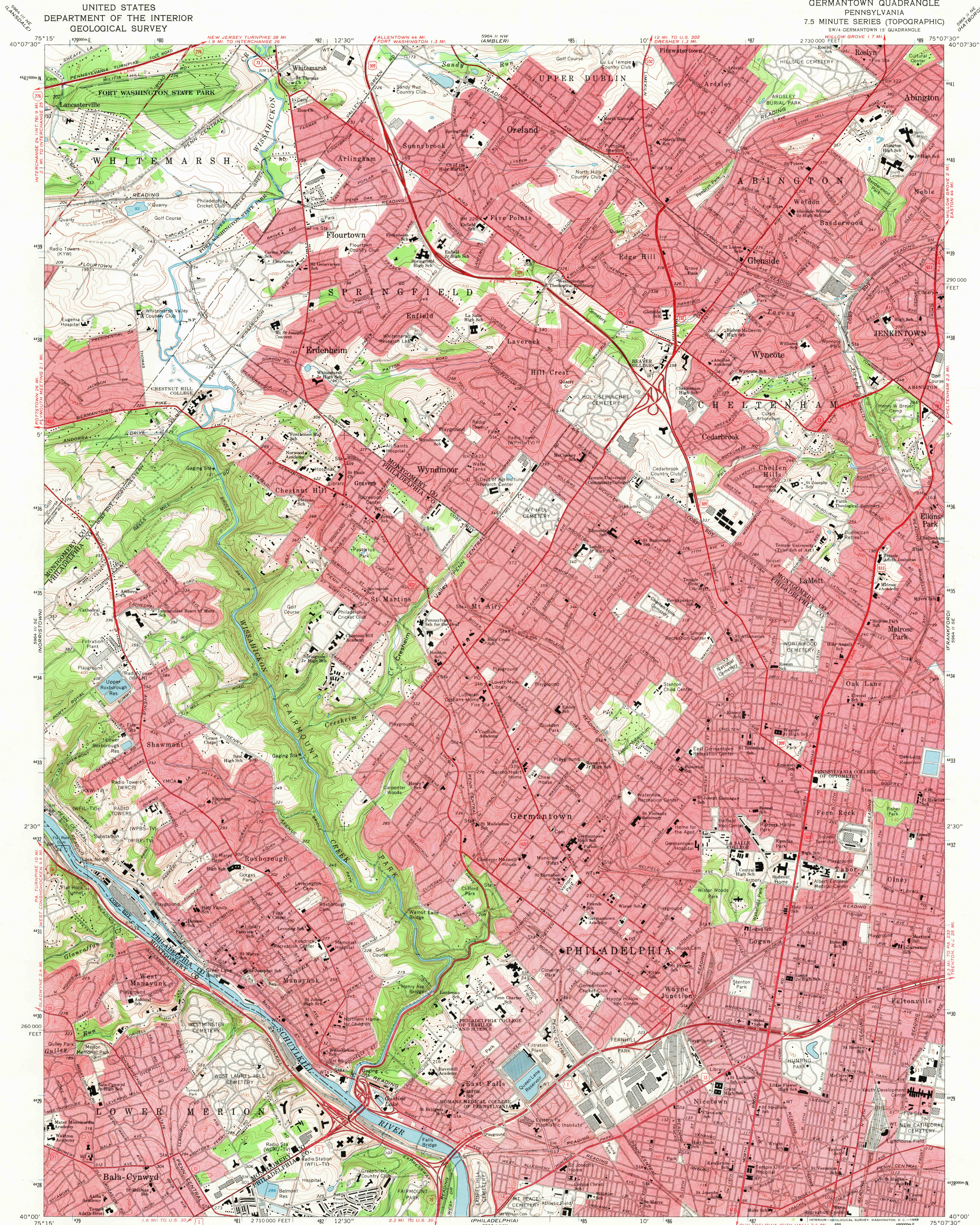


UNITED STATES
DEPARTMENT OF THE INTERIOR
GEOLOGICAL SURVEY

GERMANTOWN QUADRANGLE
PENNSYLVANIA
7.5 MINUTE SERIES (TOPOGRAPHIC)
SW 1/4 GERMANTOWN 15' QUADRANGLE

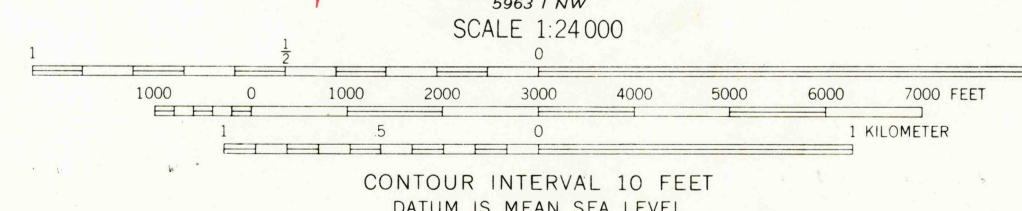


Mapped, edited, and published by the Geological Survey
in cooperation with Pennsylvania Department of Internal Affairs,
Topographic and Geologic Survey
Control by USGS, USCGS, and USCE

Topography by photogrammetric methods from aerial photographs
taken 1950. Field checked 1952. Revised from aerial photographs
taken 1965. Field checked 1967

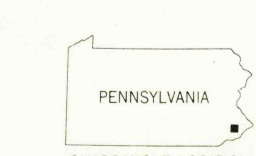
Polyconic projection. 1927 North American datum
100,000-foot grid based on Pennsylvania coordinate system, south zone
1000-meter Universal Transverse Mercator grid ticks, zone 18,
shown in blue

Red tint indicates areas in which only landmark buildings are shown



THIS MAP COMPLIES WITH NATIONAL MAP ACCURACY STANDARDS
FOR SALE BY U.S. GEOLOGICAL SURVEY, WASHINGTON, D. C. 20242
A FOLDER DESCRIBING TOPOGRAPHIC MAPS AND SYMBOLS IS AVAILABLE ON REQUEST

USGS
Historical File
Topographic Division



ROAD CLASSIFICATION
Heavy-duty ——— Light-duty ———
Medium-duty ——— Unimproved dirt ———
Interstate Route U.S. Route State Route

U.S.G.S.
FILE COPY
TOPOGRAPHIC DIVISION

GERMANTOWN, PA.
SW 1/4 GERMANTOWN 15' QUADRANGLE
N4000—W7507.5/7.5

1967
AMS 5964 11 SW—SERIES V831

2490
FEB 20 1970