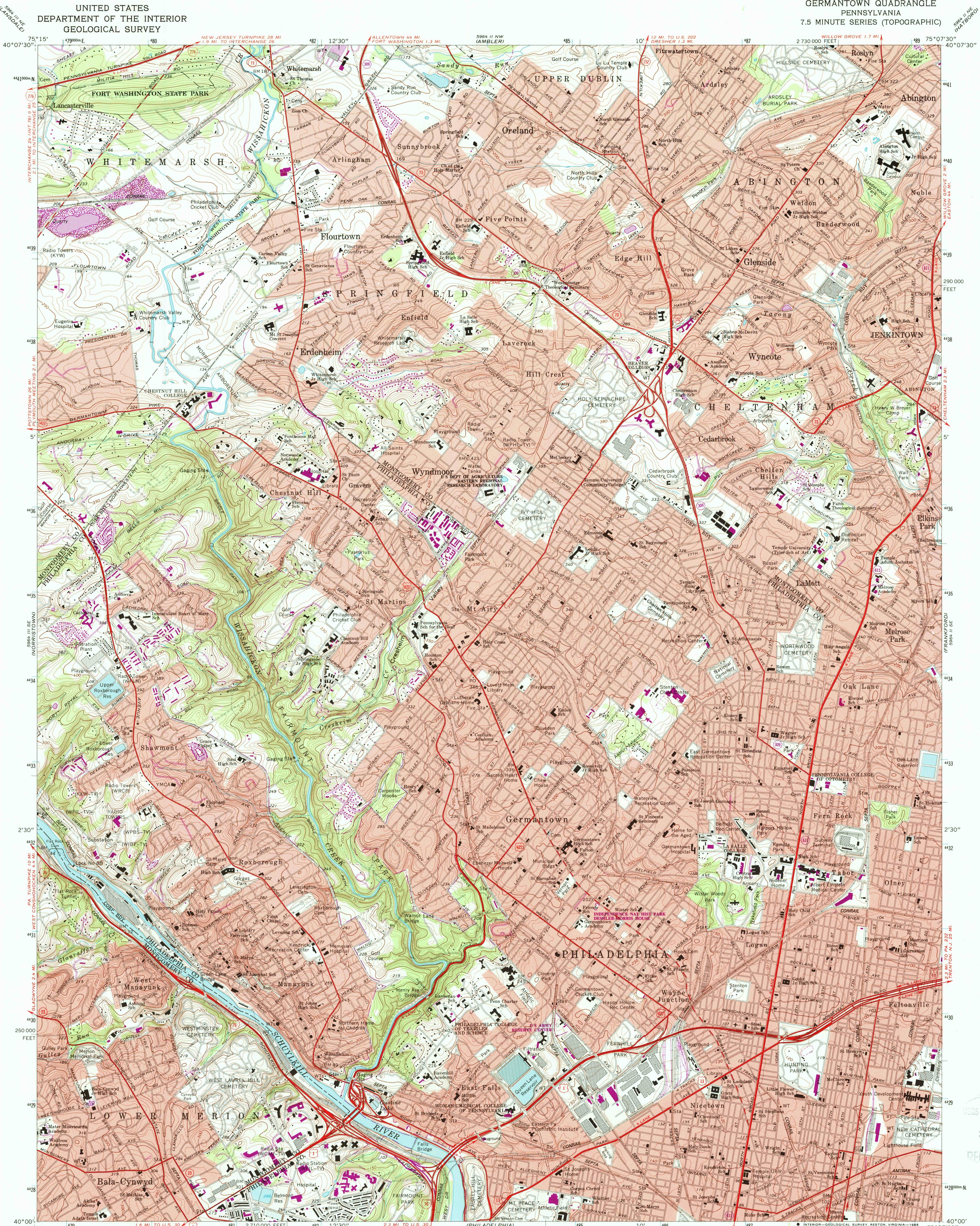


UNITED STATES  
DEPARTMENT OF THE INTERIOR  
GEOLOGICAL SURVEY

GERMANTOWN QUADRANGLE  
PENNSYLVANIA  
7.5 MINUTE SERIES (TOPOGRAPHIC)



Mapped, edited, and published by the Geological Survey  
in cooperation with Pennsylvania Department of Interior Affairs,  
Topographic and Geologic Survey

Control by USGS, NOS/NOAA, and USCE  
Topography by photogrammetric methods from aerial photographs  
taken 1950. Field checked 1952. Revised from aerial  
photographs taken 1965. Field checked 1967.  
Polyconic projection. 10,000-foot grid ticks based on  
Pennsylvania coordinate system, south zone.  
1000-meter Universal Transverse Mercator grid ticks, zone 18, shown in blue.  
To place on the predicted North American Datum 1983  
move the projection lines 6 meters south and 31 meters  
west as shown by dashed corner ticks.  
Red tint indicates areas in which only landmark buildings are shown.  
There may be private inholdings within the boundaries of  
the National or State reservations shown on this map.

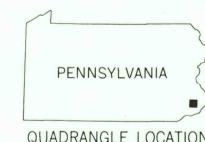


CONTOUR INTERVAL 10 FEET  
NATIONAL GEODETIC VERTICAL DATUM OF 1929

THIS MAP COMPLIES WITH NATIONAL MAP ACCURACY STANDARDS  
FOR SALE BY U.S. GEOLOGICAL SURVEY  
DENVER, COLORADO 80225, OR RESTON, VIRGINIA 22092  
A FOLDER DESCRIBING TOPOGRAPHIC MAPS AND SYMBOLS IS AVAILABLE ON REQUEST

Revisions shown in purple and woodland compiled from  
aerial photographs taken 1981 and other sources.  
This information not field checked. Map edited 1983.

ROAD CLASSIFICATION  
Heavy-duty ——— Light-duty ———  
Medium-duty ——— Unimproved dirt ———  
Interstate Route ——— U.S. Route ——— State Route ———



GERMANTOWN, PA.

40075-A2-TF-024

1967  
PHOTOREVISED 1983  
DMA 5964 II SW-SERIES V831

USGS HISTORICAL MAP  
SEP 14 1968  
REC'D FILE COPY