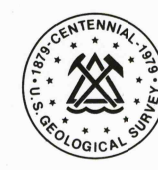
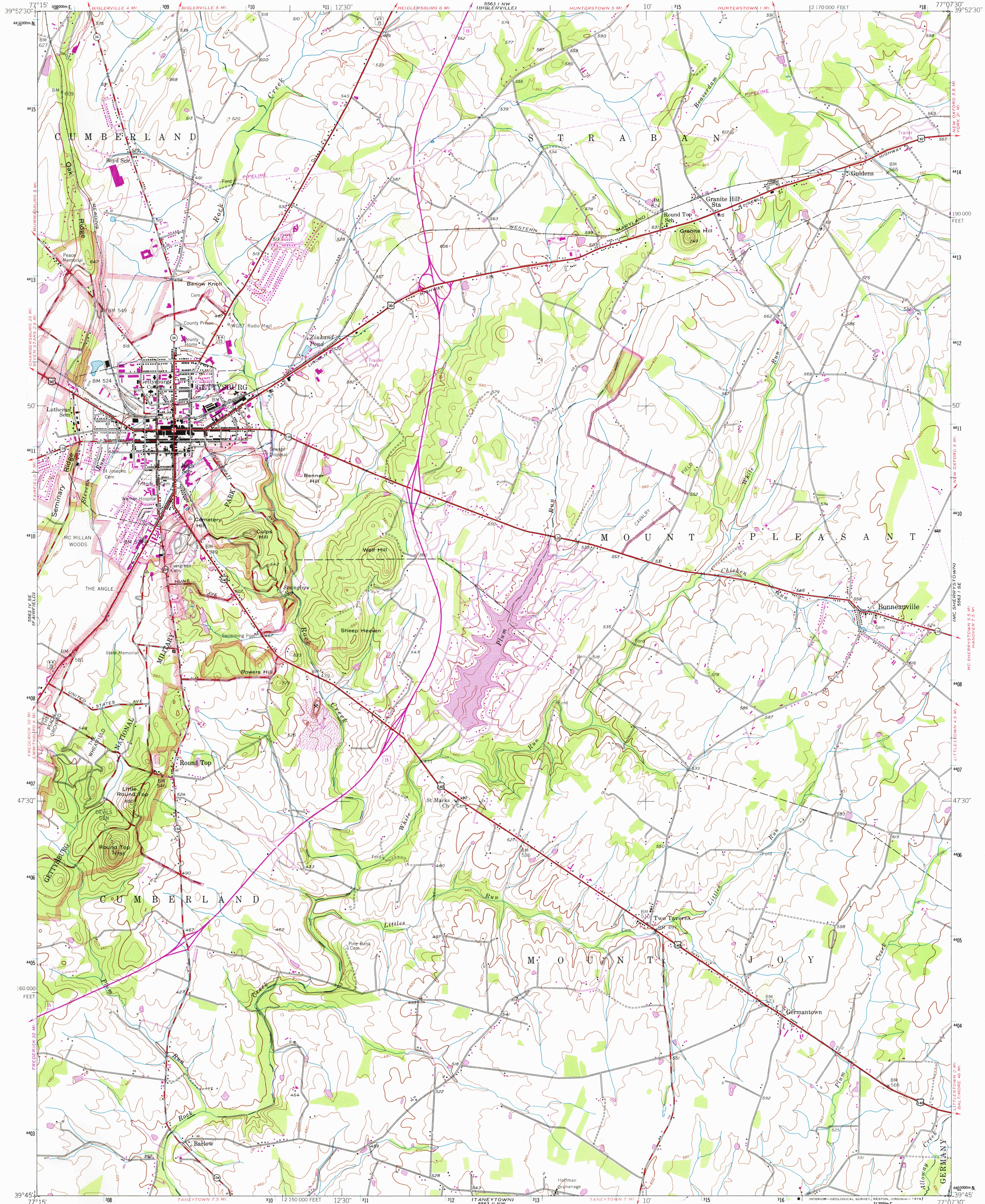


UNITED STATES
DEPARTMENT OF THE INTERIOR
GEOLOGICAL SURVEY



GETTYSBURG QUADRANGLE
PENNSYLVANIA-ADAMS CO.
7.5 MINUTE SERIES (TOPOGRAPHIC)
SW 1/4 GETTYSBURG 15' QUADRANGLE

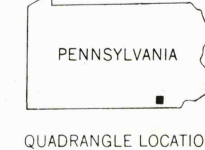
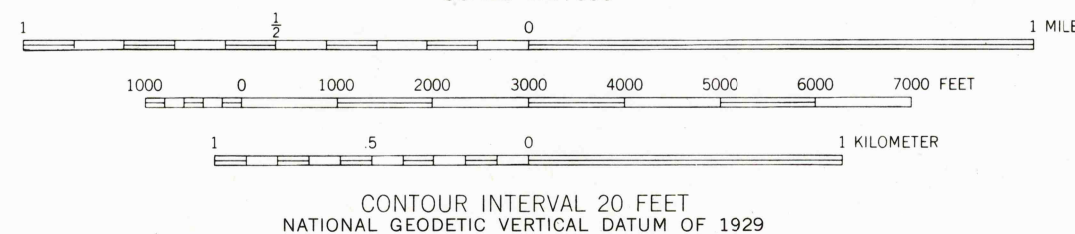
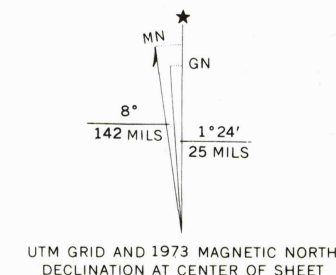
5563 NW
(HARRIS TOWNSHIP)



Maped by the Army Map Service
Published by the Geological Survey
Control by USGS and USC&GS
Topography from aerial photographs by photogrammetric methods
Aerial photographs taken 1943. Field checked 1944
Revised by Geological Survey 1951
Polyconic projection. 1927 North American datum
10,000-foot grid based on Pennsylvania coordinate system, south zone
1000-meter Universal Transverse Mercator grid ticks, zone 18,
shown in blue
To place on the predicted North American Datum 1983
move the projection lines 6 meters south and
26 meters west as shown by dashed corner ticks
There may be private inholdings within the boundaries of
the National or State reservations shown on this map

Revisions shown in purple compiled in cooperation with State of
Pennsylvania agencies from aerial photographs taken 1968
and 1973. This information not field checked

THIS MAP COMPLIES WITH NATIONAL MAP ACCURACY STANDARDS
FOR SALE BY U. S. GEOLOGICAL SURVEY, RESTON, VIRGINIA 22092
A FOLDER DESCRIBING TOPOGRAPHIC MAPS AND SYMBOLS IS AVAILABLE ON REQUEST



USGS
Historical File
Topographic Division

ROAD CLASSIFICATION
Heavy-duty ——— Light-duty ———
Medium-duty ——— Unimproved dirt ———
U.S. Route ——— State Route ———

GETTYSBURG, PA.
SW 1/4 GETTYSBURG 15' QUADRANGLE
N 3945—W 7707.5/7.5
1951
PHOTOREVISED 1968 AND 1973
AMS 5563 I SW—SERIES V831

OCT 10 1979

3550