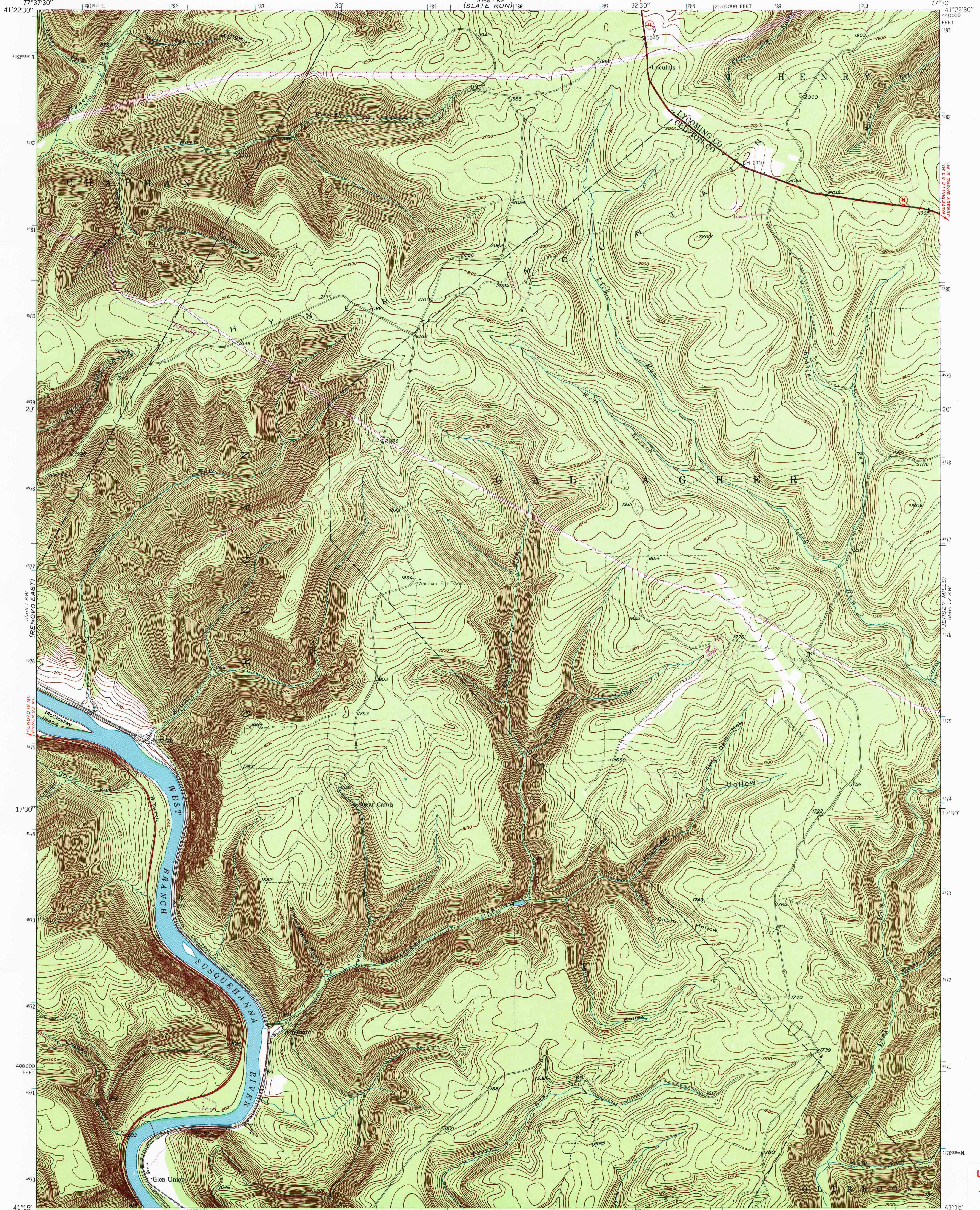




U.S. DEPARTMENT OF THE INTERIOR
U.S. GEOLOGICAL SURVEY

COMMONWEALTH OF PENNSYLVANIA
DEPARTMENT OF ENVIRONMENTAL RESOURCES
TOPOGRAPHIC AND GEOLOGIC SURVEY

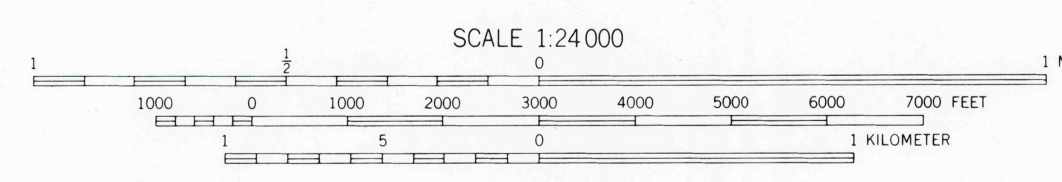
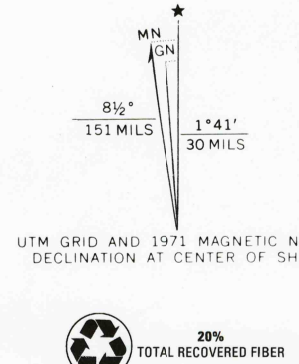
GLEN UNION QUADRANGLE
PENNSYLVANIA
7.5 MINUTE SERIES (TOPOGRAPHIC)



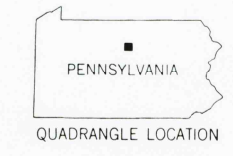
Map grid coordinates: 77°37'30" W, 41°22'30" N to 77°30' W, 41°15' N. UTM grid ticks are shown in blue. Contour interval is 20 feet. National Geodetic Vertical Datum of 1929. Scale 1:24,000. Road classification symbols for heavy-duty, light-duty, and unimproved dirt roads are present. State Route 18 is shown. Various place names and landmarks are labeled, including Chapman, Hyner, Gallagher, and Colebrook.

Mapped, edited, and published by the Geological Survey
Control by USGS and USC&GS
Topography from aerial photographs by multiplex methods
Aerial photographs taken 1944. Field check, 1946
Polyconic projection. 1927 North American datum
10 000-foot grid based on Pennsylvania coordinate system,
North zone
1000-meter Universal Transverse Mercator grid ticks,
zone 18, shown in blue

Revisions shown in purple compiled in cooperation with State of Pennsylvania agencies from aerial photographs taken 1971. This information not field checked.



CONTOUR INTERVAL 20 FEET
NATIONAL GEODETIC VERTICAL DATUM OF 1929



ROAD CLASSIFICATION
1984
Heavy-duty ——— Light-duty ———
Unimproved dirt - - - - -
State Route

APR 21 2005

GLEN UNION, PA.
N4115-W7730/7.5
1946
PHOTOREVISED 1971
AMS 5466 I SE - SERIES V831

THIS MAP COMPLIES WITH NATIONAL MAP ACCURACY STANDARDS
FOR SALE BY U.S. GEOLOGICAL SURVEY, P.O. BOX 25286, DENVER, COLORADO 80225
A FOLDER DESCRIBING TOPOGRAPHIC MAPS AND SYMBOLS IS AVAILABLE ON REQUEST

USGS Library
Reston, VA.
Topo Archive

