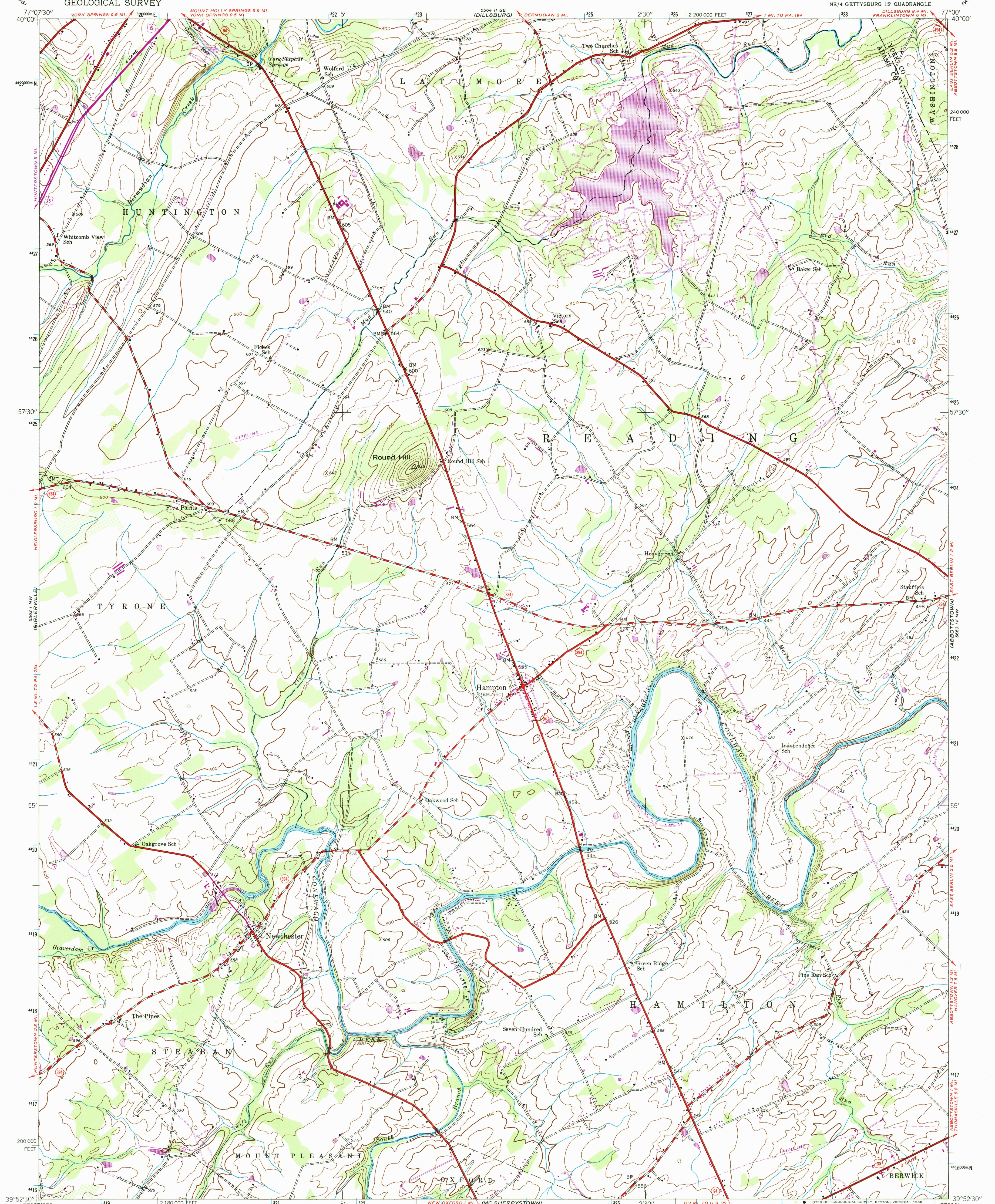
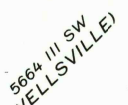
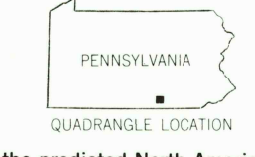
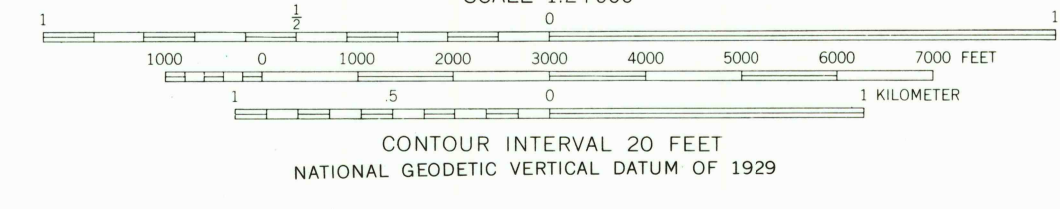
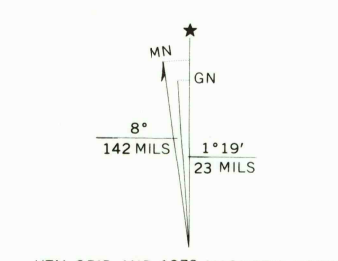


UNITED STATES  
DEPARTMENT OF THE INTERIOR  
GEOLOGICAL SURVEY

HAMPTON QUADRANGLE  
PENNSYLVANIA  
7.5 MINUTE SERIES (TOPOGRAPHIC)  
NE/4 GETTYSBURG 15' QUADRANGLE



Maped by the Army Map Service  
Published for civil use by the Geological Survey  
Control by USGS, USC&GS, and USFS  
Topography from aerial photographs by photogrammetric methods  
Aerial photographs taken 1943. Field check 1944  
Polyconic projection. 1927 North American datum  
10,000-foot grid based on Pennsylvania coordinate system, south zone  
1000-meter Universal Transverse Mercator grid ticks,  
zone 18, shown in blue  
Revisions shown in purple compiled by the Geological Survey  
in cooperation with State of Pennsylvania agencies from aerial  
photographs taken 1968 and 1973. This information not field checked



ROAD CLASSIFICATION  
Heavy-duty ——— Light-duty ———  
Medium-duty ——— Unimproved dirt ———  
U.S. Route ——— State Route ———

THIS MAP COMPLIES WITH NATIONAL MAP ACCURACY STANDARDS  
FOR SALE BY U.S. GEOLOGICAL SURVEY, RESTON, VIRGINIA 22092  
A FOLDER DESCRIBING TOPOGRAPHIC MAPS AND SYMBOLS IS AVAILABLE ON REQUEST

To place on the predicted North American Datum 1983,  
move the projection lines 6 meters south and  
26 meters west as shown by dashed corner ticks

HAMPTON, PA.  
NE/4 GETTYSBURG 15' QUADRANGLE  
39077-H1-TF-024  
1944  
PHOTOREVISED 1968 AND 1973  
DMA 5563 1 NE-SERIES V831

