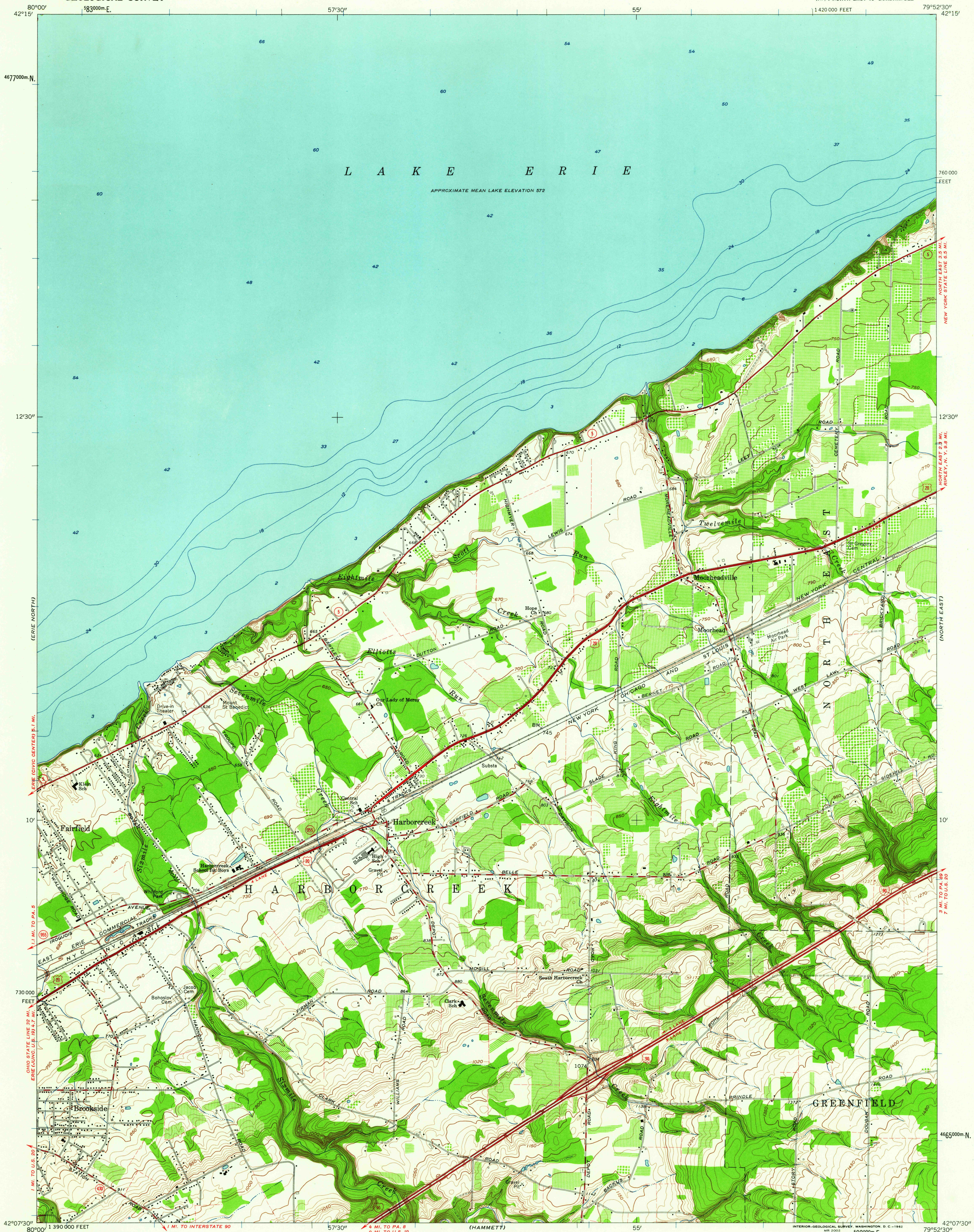


UNITED STATES
DEPARTMENT OF THE INTERIOR
GEOLOGICAL SURVEY

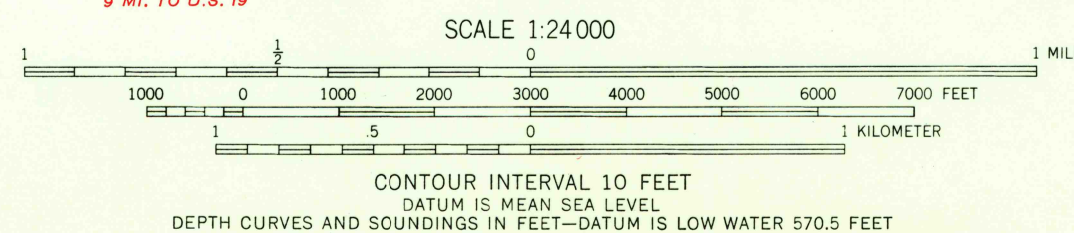
HARBORCREEK QUADRANGLE
PENNSYLVANIA—ERIE CO.
7.5 MINUTE SERIES (TOPOGRAPHIC)
NW 1/4 NORTH EAST 15' QUADRANGLE

(NORTH EAST)



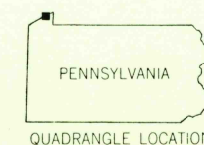
Mapped, edited, and published by the Geological Survey
Control by USGS and USC&GS
Topography from aerial photographs by photogrammetric methods
Aerial photographs taken 1956. Field check 1960
Selected hydrographic data compiled from U. S. Lake Survey Chart 33
(1959). This information is not intended for navigational purposes
Polyconic projection. 1927 North American datum
10,000-foot grid based on Pennsylvania coordinate system, north zone
1000-meter Universal Transverse Mercator grid ticks,
zone 17, shown in blue
Fine red dashed lines indicate selected fence and field lines where
generally visible on aerial photographs. This information is unchecked

APPROXIMATE MEAN
DECLINATION, 1960



THIS MAP COMPLIES WITH NATIONAL MAP ACCURACY STANDARDS
FOR SALE BY U.S. GEOLOGICAL SURVEY, WASHINGTON 25, D. C.
A FOLDER DESCRIBING TOPOGRAPHIC MAPS AND SYMBOLS IS AVAILABLE ON REQUEST

USGS
Historical File
Topographic Division



ROAD CLASSIFICATION
Heavy-duty ——— Light-duty ———
Medium-duty ——— Unimproved dirt ———
Interstate Route U. S. Route State Route

HARBORCREEK, PA.
NW 1/4 NORTH EAST 15' QUADRANGLE
N4207.5—W7952.5/7.5

1960

FILE COPY
TOPOGRAPHIC DIVISION

JUN 20 1962

2575